

# Liveable Communities, Liveable Waterways Information for Landholders



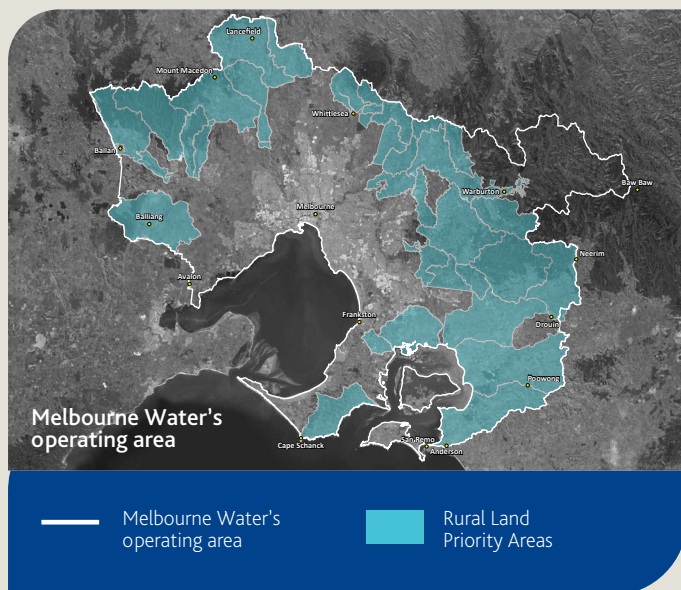
## What can I apply for under Liveable Communities, Liveable Waterways?

We are looking for projects that provide value to Melbourne Water, our customers, partners and community by aligning with our program guiding principles. Please see the table on page 2, for an indicative list of the types of activities you could apply for.

To read more about our past project examples, please visit [www.melbournewater.com.au/services/grants/liveable-communities-liveable-waterways-program/waterway-and-stormwater-management](http://www.melbournewater.com.au/services/grants/liveable-communities-liveable-waterways-program/waterway-and-stormwater-management)

We strongly recommend that before applying, contact Melbourne Water to discuss your property and project ideas to ensure that you are eligible to apply.

To read our program guidelines and more information on eligibility please visit [www.melbournewater.com.au/services/grants/liveable-communities-liveable-waterways-program/how-apply](http://www.melbournewater.com.au/services/grants/liveable-communities-liveable-waterways-program/how-apply)



## What are the benefits of applying for an incentive?

The benefits of applying for a Liveable Communities, Liveable Waterways incentive include:

- increased productivity for the property owner and improved waterway health for the broader community
- improved management of water sensitive areas such as waterways, drains, dams, wetlands, gullies, seeps, soaks springs and low-lying and seasonally wet areas
- improved access, security and quality of water
- improved soil health
- reduced input costs through retention of nutrients and soil on-farm
- support in achieving your goals for improving management practices
- contributing to the requirements for environmental assurance accreditation
- reduced expenditure by introducing best management practices
- site assessment – one of our professional site assessors will provide expert advice tailored to your property

## How much will Melbourne Water fund?

We will contribute to the cost of a broad range of activities designed to improve waterway health and water quality, including labour and materials.

For fencing, the further you set back your fence from the riverbank, the greater the proportion of the fencing costs we can contribute to. The minimum average setback we will fund is 10 metres.

Fence distance (from top of riverbank)	Our contribution	Rural Fence	Electric Fence
10 metres	50%	\$11/m	\$5.98/m
15 metres	65%	\$14/m	\$7.77/m
20 metres or greater	80%	\$17/m	\$9.57/m



## What type of projects are we seeking?

We are looking for long term projects and partnerships that provide value to Melbourne Water, our customers, partners and community by aligning with the following and guiding principles.

## Guiding Principles

- Have clear alignment with our strategies and services. For example, Healthy Waterways, Flood Management.
- Environmental Stewardship, Melbourne Water System, Sewerage, Drinking or Water Quality.
- Provide multiple community and/or environmental benefits through application of best practice.
- Engage with our customers and community and inform them of our purpose and strategic direction.
- Demonstrate collaboration to provide greater value beyond what can be achieved by Melbourne Water alone. Partnering with Melbourne Water is the first step in collaboration however we also look for projects that may provide opportunities for neighbours, community groups and organisations to collaborate.
- Innovative projects that can be widely adopted (not required for all applications).

## Examples of some activities our program funds

Over the years Melbourne Water has fostered meaningful partnerships with our customers and community through existing grants in waterway management and stormwater. Previously funded projects have included the following activities:

- weed control
- revegetation
- fencing
- farm layout and track design and construction
- water use efficiency
- effluent and feed-pad management
- grazing management and land-class fencing
- regenerative agricultural practices
- construction of stormwater treatment or harvesting assets
- soil erosion stabilisation work (not on waterways).

## Who can apply?

Your project or proposal must be located within Melbourne Water's operating area. You can apply for a combination of activities on one application form.

## How Do I apply?

When you are ready to apply, please visit <https://www.melbournewater.com.au/services/grants/liveable-communities-liveable-waterways-program/how-apply>, or speak to your Melbourne Water representative .

We will contact eligible applicants to arrange a site assessment to further develop the project with you. Once we have approved a project, we will ask you to enter into an agreement with Melbourne Water that details the works, funding and timelines. We will complete an onsite audit at the end of the projects.

## We also give preference to projects:

- that are costed fairly based on the activities involved, can be achieved and represent value for money
- that have frontages greater than 50 metres along rivers and creeks in the Melbourne Water area of operations (on the one property or a group of properties)
- that have frontages with links to areas of high value vegetation or other waterway improvement work
- that have stream frontage land in urban areas if neighbours are joining together to protect their local creek
- where landholders have shown a commitment to protecting water sensitive areas on their properties through best management practices such as stock exclusion, revegetation and nutrient management plans
- where landholders have demonstrated property management planning principles. This may include planning and management for the whole farm, or more specifically:
  - native vegetation
  - pasture and soil health
  - nutrients
  - farm tracks
  - irrigation scheduling
  - off-stream stock water supply
  - surface water/drainage management.

- that are aligned with the priorities of the Healthy Waterways Strategy or another Melbourne Water strategy ([www.melbournewater.com.au/about/what-we-do/publications/healthy-waterways-strategy](http://www.melbournewater.com.au/about/what-we-do/publications/healthy-waterways-strategy)).

- that fall in the priority areas, shown on our fall within our Healthy Waterways Strategy priority regions, as indicated on our [interactive map](https://healthywaterways.com.au/map?toggle=RLM-PRI) (<https://healthywaterways.com.au/map?toggle=RLM-PRI>).

## Questions and support

If you have any questions about the Liveable Communities, Liveable Waterways Program or you need help with your application, please call us on 131 722 or email [incentives@melbournewater.com.au](mailto:incentives@melbournewater.com.au)

