



February  
2016

## Drought Response Plan: Part B A Water Sharing Plan for Licenced Water Users in the: **Diamond Creek catchment**

To be read in conjunction with Part A: A Water Sharing Plan for all Licensed Water Users 2016

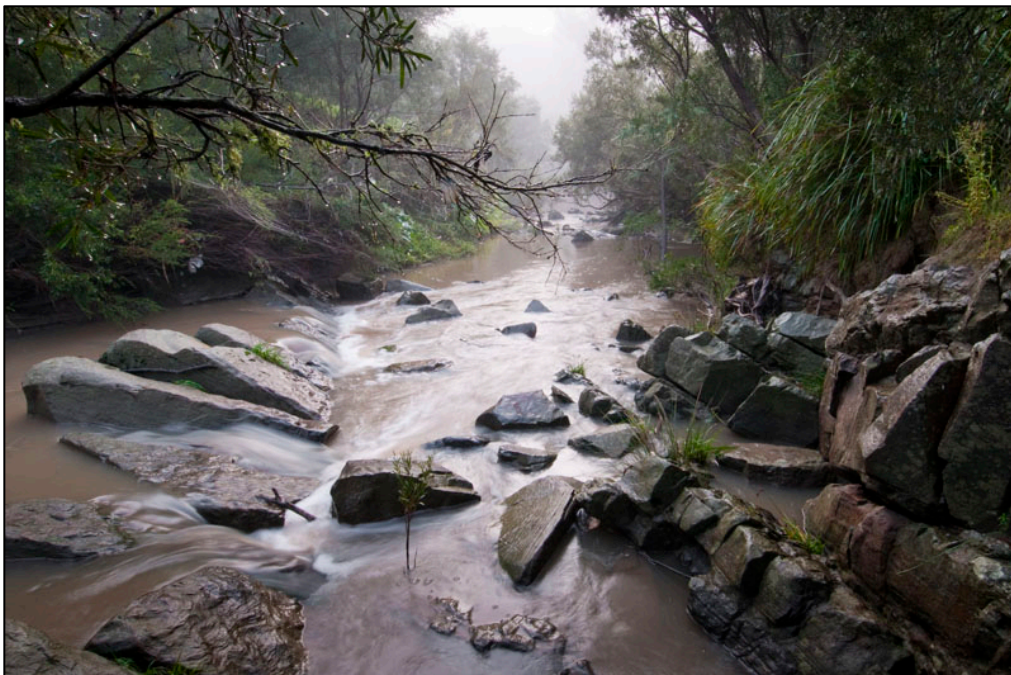
### 1. Catchment Description

Diamond Creek is a tributary of the Yarra River that rises on the Kinglake Plateau and flows south-westerly into the Yarra past St Andrews, Hurstbridge, Diamond Creek and Eltham. The catchment covers 311 km<sup>2</sup> and includes the tributaries of Running Creek and Arthur's Creek, as well as smaller tributaries such as Watery Gully that are significant to local landholders.

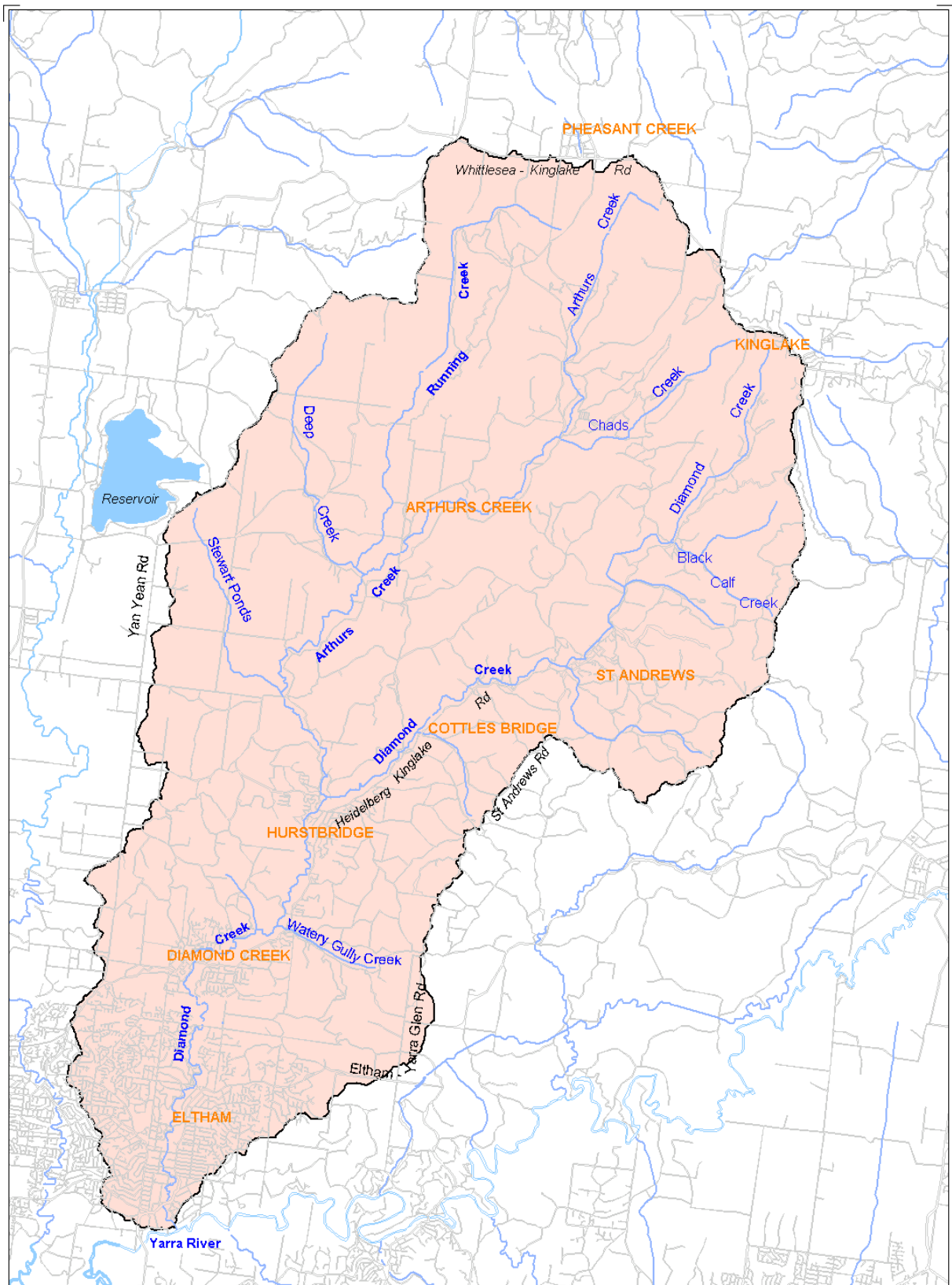
Grazing and horticulture, principally orchards and viticulture, are the main land uses within the catchment. A number of hobby farms also exist on the fringes of urban areas. The urban area downstream of Hurstbridge is expanding into the catchment around Diamond Creek, North Eltham, Research and Kangaroo Ground.

The Diamond Creek catchment is subject to a Stream Flow Management Plan which commenced in 2003. Further information on the establishment of ban and restriction levels for this catchment can be found within the plan.

The map on the following page shows the catchments and major waterways.



Diamond Creek Eltham Lower



Diamond Creek catchment



## 2. Ban Triggers

Flow levels are monitored by gauges (data logging stations) that provide continuous flow readings. The data logging station for Diamond Creek is located at [Hurstbridge \(229612\)](#). The trigger levels for the Diamond Creek (Lower) catchment are as shown in the following table:

Period	Dates	Ban Trigger (ML)
Low Flow	1 Dec – 30 Jun	2.5
High Flow	1 Jul - 31 Oct	10
Shoulder	1 Nov - 30 Nov	6

Bans are implemented or lifted when a catchment-specific trigger has been met, based upon the seven day rolling average (Average) stream flow.



*Running Creek gauge site*

### 3. Application of Plan

Irrespective of anything in this section, users must not exceed their annual allocation on their licence or take water outside of their authorised take period.

This catchment is subject to a Maximum Daily Volume (MDV) - no greater than two percent of the annual volume of the licence can be taken on any day.

Active licence holders in the Diamond Creek with allocations greater than 5ML are metered by Melbourne Water.



*Typical Apple Orchard*

### Document Versions

Revision	Date Issued	Issued To	Issued By
Version 1	2016	Melbourne Water Diversion Customers	Melbourne Water Diversion Team