


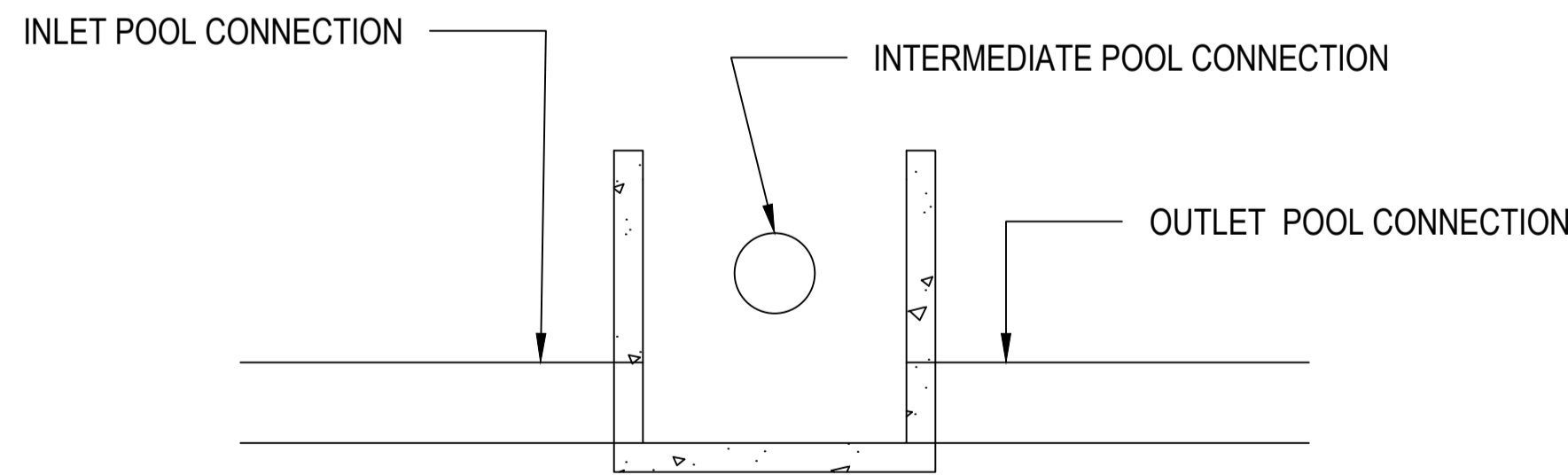
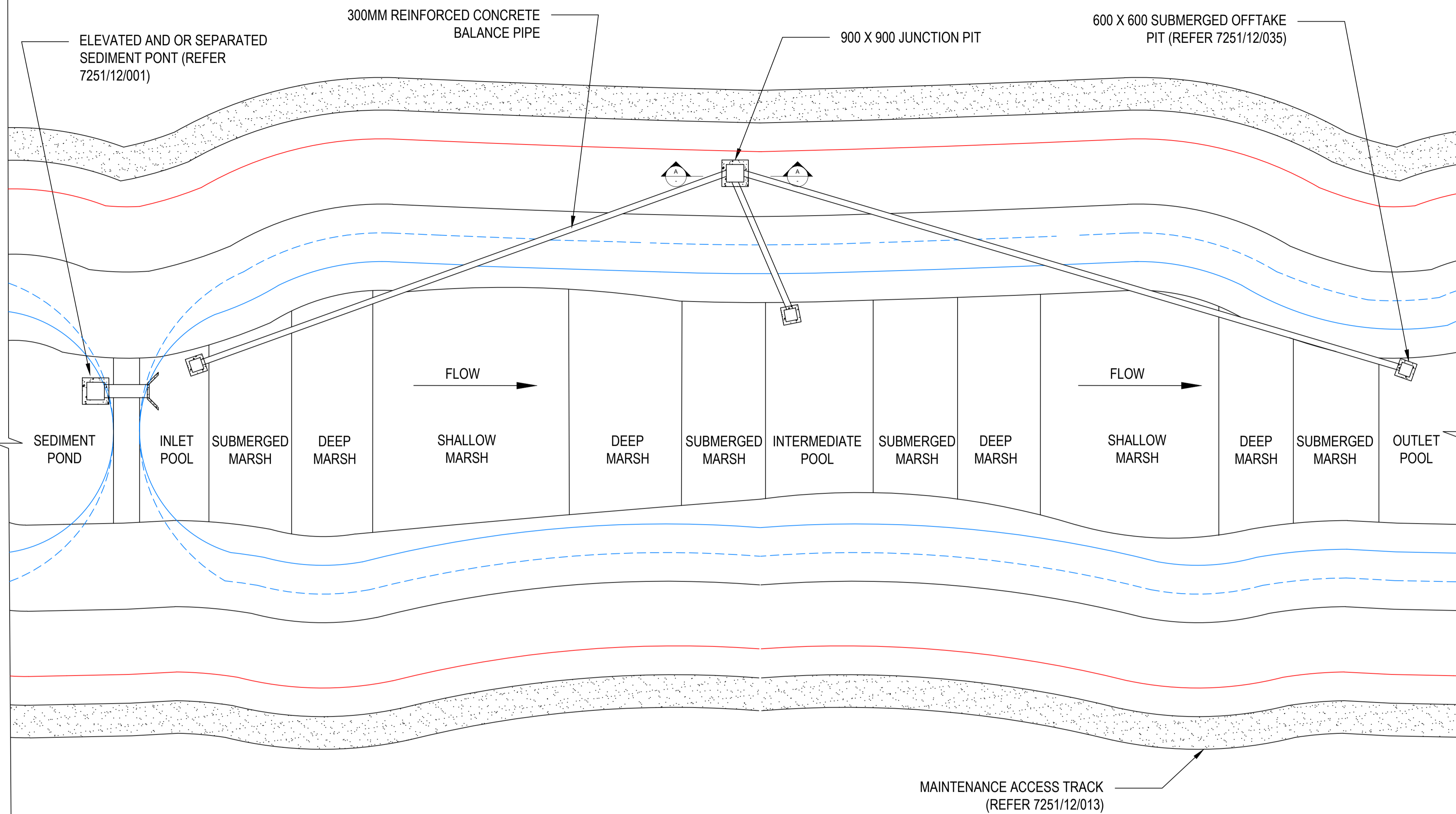


**NOTE:**

- EXAMPLE APPLIES WHERE INLET AND OUTLET POOLS ARE 1.5M DEEP, HOWEVER THE INTERMEDIATE POOL IS 1.2M DEEP.
- TO ATTAIN FULL GRAVITY GRAVITY DRAWDOWN THE INTERMEDIATE POOL MUST DRAW BACK TO THE JUNCTION PIT, THEN FLOW TO THE OUTLET POOL.
- SUBMERGED OFFTAKE PITS ARE TO BE LOCATED AT THE LOWEST POINT OF THE WATER BODY, WITH THE BASE OF THE NOTCH OR TOP OF THE PIT NO HIGHER THAN 300MM FROM THE DEEPEST INVERT LEVEL OF THE POOL.
- THE SUBMERGED OFFTAKE PITS AND BALANCE PIPES IN CONJUNCTION WITH THE TWIN CHAMBER OFFTAK PIT ARE INTEGRAL FOR CONTROLLING THE EDD AND PROVIDING EFFECTIVE DRAWDOWN CAPABILITY.
- DRAWDOWN FROM THE TWIN CHAMBER OFFTAK PIT AVOIDS MULTIPLE PUMPING POINTS, DISTURBANCE OF VEGETATION, PUMP RELOCATION, HEALTH AND SAFETY ISSUES, MAINTENANCE, TIME AND COST.
- 600 X 600 BALANCE PIPE SUBMERGED OFFTAKE PITS CAN BE PURCHASED AS PRECAST UNIT AND ALTERED (NOTCH CUT) ONSITE.
- THE 900MM X 900MM SUBMERGED OFFTAKE PIT (CONNECTING TO THE TWIN CHAMBER OFFTAK PIT) WHEN SUNK INTO THE CLAY LINER MUST BE 300MM ABOVE LOWEST IL OF THE POOL, THE CLAY LINER INTEGRITY MUST NOT BE COMPROMISED.
- SHOULD THE CONTRACTOR CHOOSE TO SINK THE PIT INTO THE CLAY LINER TO ACHIEVE 300MM FROM IL - CLAY LINER INTEGRITY MUST NOT BE COMPROMISED.

**LEGEND**


- NWL 
- TEDD 
- Q100 



**JUNCTION PIT SECTION A-A**

**PLAN VIEW**

**CONCEPT ONLY  
NOT TO SCALE**

												TITLE BALANCE PIPE EXAMPLE TYPE 1 SPLIT SYSTEM (PLAN VIEW) SHEET 1 OF 1					
										DRAFTER DRAFTING CHECK		DESIGNER ENGINEERING REVIEW		DESIGN MANAGER APPROVAL		PROJECT MANAGER APPROVAL	
										PROJECT DATUM		Original Size MELBOURNE WATER CORPORATION					
										SCALE		7251/12/4016 MWC DRAWING NUMBER					
										CODE		REV					

REV	DESCRIPTION	COMPANY	PROJECT OR WO NUMBER	DRAWN	ENG. CHECK	PR. MAN. APPD	DATE								
-----	-------------	---------	----------------------	-------	------------	---------------	------	--	--	--	--	--	--	--	--