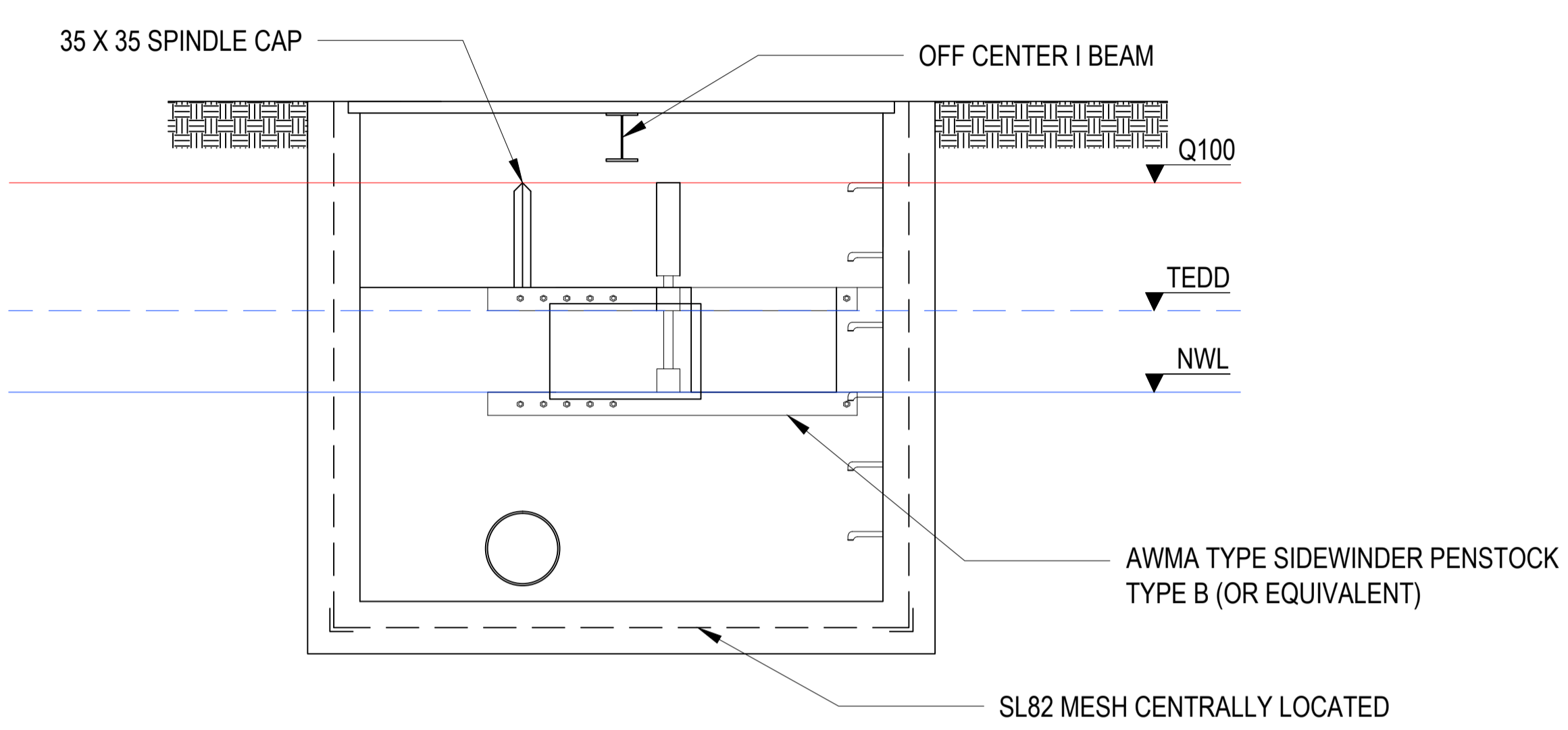


TWIN CHAMBER OUTFALL PIT PLAN VIEW

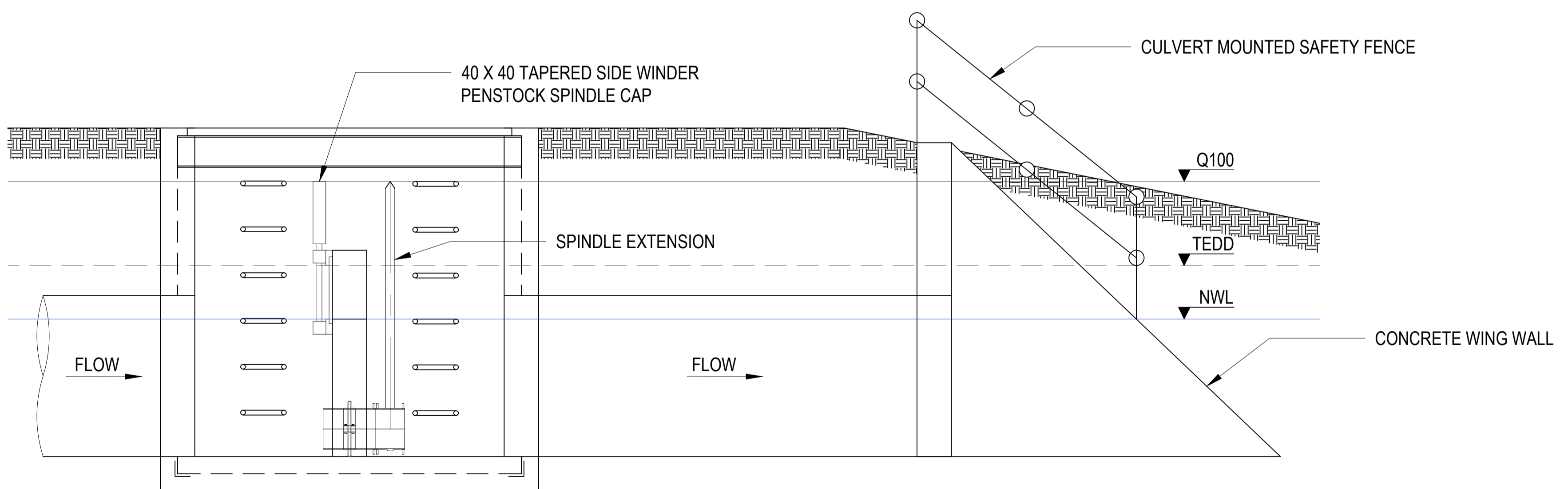


TWIN CHAMBER OUTFALL PIT SECTION B-B



CONCRETE WING WALL PHOTO

- NOTE:
- REFER TO 7251/12/011 FOR ADDITIONAL PIT DETAIL (VALVE CLEARANCE, COMPONENT LABELS, DIMENSIONS ETC.).
 - PIPE IS TO BE SIZED BY DESIGNER TO CONVEY Q100 AND EDD.
 - CONCRETE HEADWALL REQUIRES STRUCTURAL ASSESSMENT.
 - 625MM SIDEWINDER NOTCH SHOULD TYPICALLY BE ADOPTED FOR CATCHMENTS >60HA.
 - PIT LID TO BE FLUSH WITH FINISH SURFACE LEVEL.
 - PIT LID TO BE IN ACCORDANCE WITH AS1650.
 - PIT LID DESIGNED TO SUIT.



TWIN CHAMBER OUTFALL PIT SECTION A-A

**CONCEPT ONLY
NOT TO SCALE**

										TITLE OUTFALL EXAMPLE TYPE 1 TWIN CHAMBER OUTFALL PIT SHEET 2 OF 2							
REV		DESCRIPTION		COMPANY	PROJECT OR WO NUMBER	DRAWN	ENG. CHECK	PR. MAN. APP'D	DATE	DRAFTER	DESIGNER	DESIGN MANAGER APPROVAL	PROJECT MANAGER APPROVAL	PROJECT DATUM	Original Size	MELBOURNE WATER CORPORATION	
										DRAFTING CHECK	ENGINEERING REVIEW			SCALE		7251/12/4005	
														CODE		MVC DRAWING NUMBER	REV
1	2	3	4	5	6	7	8	9	10	11	12						