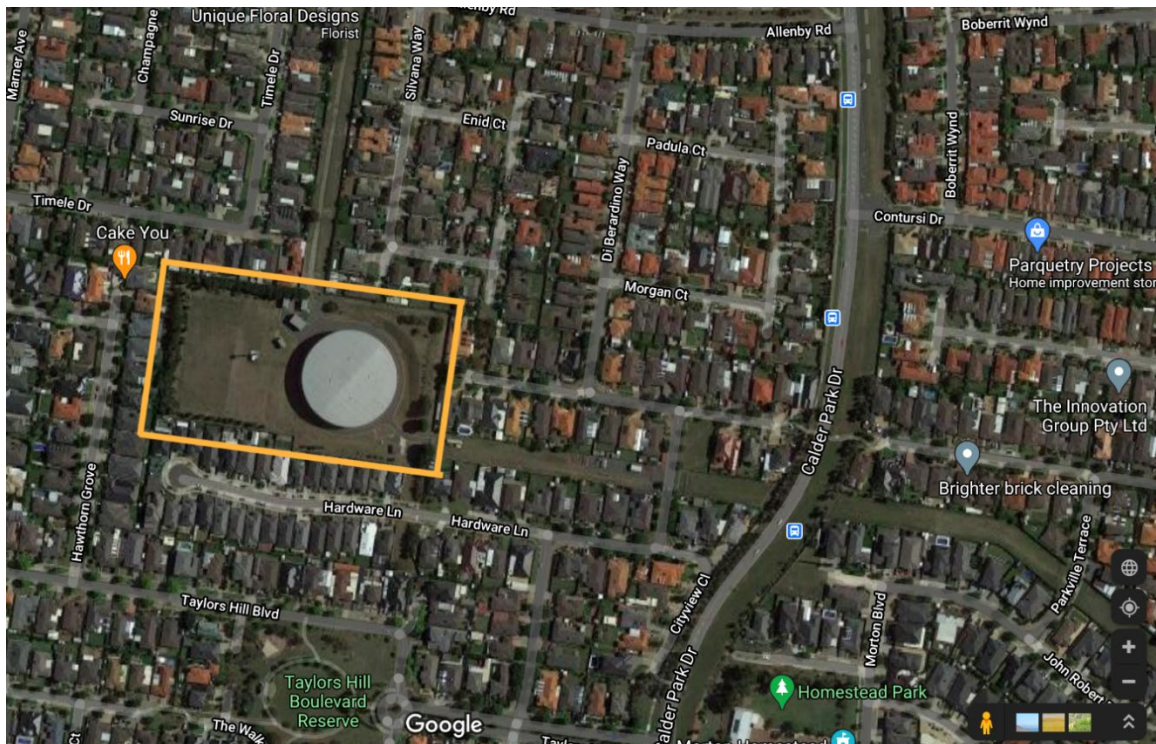


# Sydenham Pump Station

## Upcoming 24hr works

The Sydenham Pump Station located on Allanby Road (near Southbank Walk and Hardware Lane) in Taylors Lake is integral infrastructure to keep the water supply continuous to residents and businesses.

It is used to provide alternate water supply during shutdown of our M333 Greenvale-Sydenham Pipeline for maintenance/repairs/capital works. This pump station pushes water in a reverse flow direction towards Greenvale to supply City West Water and Western Water zones.



## Timing of works

To enable Melbourne Water to undertake essential works the pump station will run continuously from the **10 May 2021 to 24 May 2021** (inclusive).

This will include extra generators running 24/7 until the works are complete.

## What will I notice?

**Noise:** An increase in noise as generators are used to operate plant and equipment. Noise mitigation measures will be in place to minimise impacts.

**Traffic:** An increase in vehicle movements in and out of the pump station site.

**Services:** Water supply and sewerage services in your area will not be impacted by our works.

Melbourne Water will continue to work closely with the community to minimise impacts wherever possible. We thank you for your understanding as we carry out these essential service upgrades. We encourage you to contact the team (details in blue box below) if you have any questions or concerns.

### Keep up to date with what's happening

For more information about this project follow us on the Melbourne Water webpage

**[melbournewater.com.au/holden](http://melbournewater.com.au/holden)** or please call the project team on **1800 931 140** or email **[holdenreservoirpipeline@melbournewater.com.au](mailto:holdenreservoirpipeline@melbournewater.com.au)**



Interpreter

For an interpreter, please call the Translating and Interpreting Service (TIS National) on 13 14 50



**Like us**

[facebook.com/melbournewater](https://facebook.com/melbournewater)



**Follow us**

@MelbourneWater



**Visit us**

[www.melbournewater.com.au](http://www.melbournewater.com.au)