

# Frequently Asked Questions

## Hawthorn Sewer Upgrade Project- Relining Phase

### Why are sewer pipes in Hawthorn and Richmond being upgraded?

The Hawthorn Main Sewer was constructed over 100 years ago. A program of renewal works is now required to keep this vital asset functioning well into the future. These works will ensure that the local community continue to receive reliable sewerage services.

This is part of our commitment to enhancing life and liveability in the Melbourne region.

### Where are the works happening?

The relining works will occur along the existing sewer alignment from Power Street along Denham Street in Hawthorn and start again in Murphy Street to Burnley Street in Richmond.

The section of sewer under the Yarra River will be replaced as a separate phase of the Hawthorn Sewer Upgrade.



### What will the works involve?

The work for the relining will be conducted in sections. Not all of the sewer pipe will be relined at the same time. We will keep local residents and businesses informed of which sections will be progressively rehabilitated and the estimated time that each section will take.

Firstly, the pipe gets cleaned and scanned so we can assess the condition before we begin works. This involves removing the ladders to ensure our equipment can be safely lowered into the sewer pipe. Some cutting of the road and concrete will be required to set up our equipment above the manholes as well.

Once the new sewer lining is in place (refer to *What is CIPP and GRP lining?* for more information on the relining work) we will remove all the equipment from the manholes and repair the inside of the manhole and put back in new ladders. We will also repair the road surface around the manholes.

In some sections we will have to set up bypass pumping systems to move the sewage above ground. This work will involve cutting road and concrete surfaces to place the bypass pipes safely across roads, driveways and footpaths. These surfaces will be repaired when the works are complete.

### **How long will it take?**

We anticipate the works will take approximately 10 months to complete. The works will be staged and we will notify residents and businesses before each stage of the works has begun and again when the works are fully complete.

### **What times will you be working?**

Standard working hours will be 7am to 6pm Monday to Friday and 7am to 1pm Saturdays (if required). Night works will be 9pm to 7am Sunday to Thursday.

Some extended work hours may be required when completing critical work processes. Affected residents and businesses will be informed of this prior.

### **How is the condition of the sewer pipe improved?**

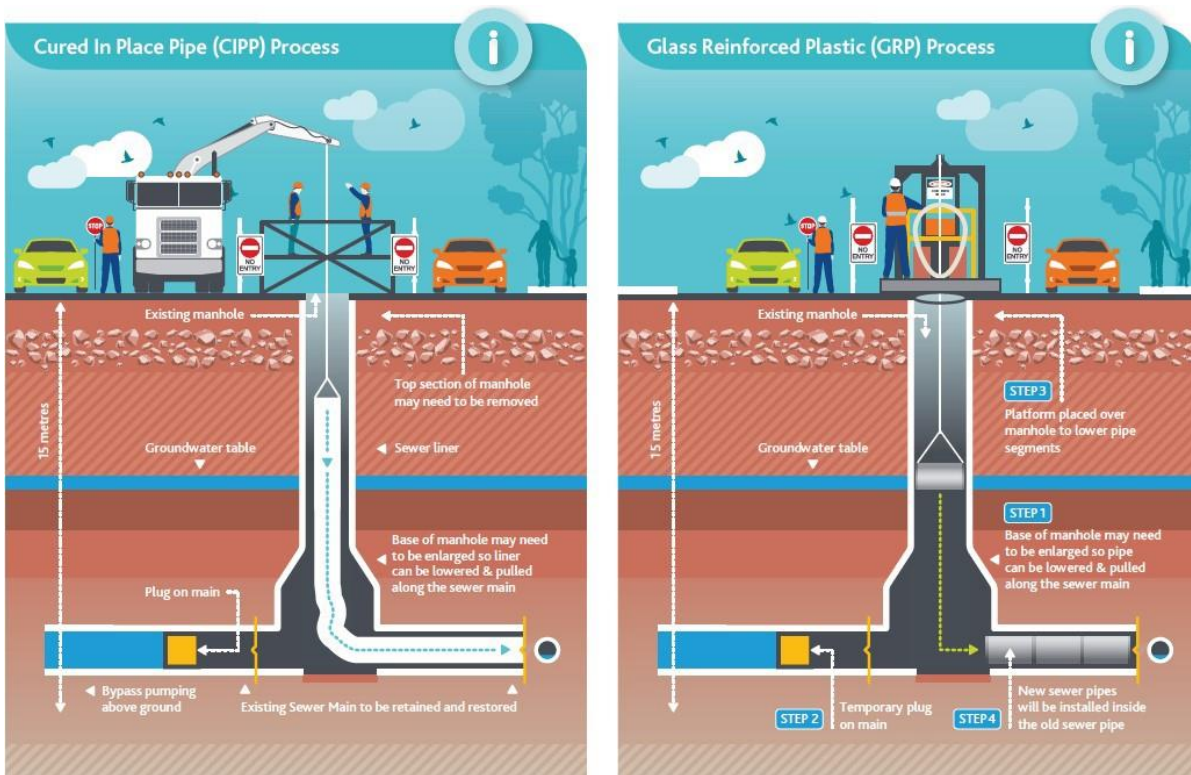
We will be using two techniques to reline the Hawthorn Main Sewer – Cured In Place Pipe (CIPP) and Glass Reinforced Plastic (GRP) processes.

#### **What is CIPP lining?**

In this method, a flexible sock-like resin-infused pipe is inserted along the length of the existing pipe. The “sock” is then inflated with air to expand to the existing pipe size. The next step is to harden the CIPP liner using UV lights that move along the inside of the pipe from manhole to manhole, or by using steam, until the pipe is cured in place.

#### **What is GRP lining?**

This method involves relining the sewer by inserting short sections of plastic pipe down existing manholes. Each piece gets pushed, or “jacked” along to the next manhole to form the new pipe. Grout is then inserted into the void between old and new pipe.



## What do I do if there is a problem with my sewer pipes during the upgrade works?

These works are not impacting the service pipes running from your home into the Hawthorn Main Sewer. If you have an issue with your sewer service, you will need to contact your water retailer; Yarra Valley Water (contact 132 762) or City West Water (contact 132 642).

## Will I be able to use my shower or my washing machine during the works?

Yes, throughout our works your sewerage service will operate as normal. There will be no disruption to water or sewer services. If you experience an issue with your water service, contact your water retailer.

## Will it smell?

The odour from the sewer will be minimised and localised. When the lids of the manholes are removed there will be some harmless gases, that escape from below. This will also occur when the bypass pipes are being set up and removed.

There will also be a noticeable smell around when we are CIPP relining. This smell is not associated with gases from the sewer, but the soft plastic liner that is lowered into the sewer. This liner is infused with a resin that smells like strong paint fumes. Once the liner is down in the sewer the smell should be reduced.

## How will these works affect me?

While we will do our best to minimise the impact of these works, there will be work sites located at manholes in Lynch Street, Power Street, Denham Street, Murphy Street and Burnley Street at different times for the duration of the project.

We will notify local residents and businesses when we are working close to their property. Traffic and parking conditions will be affected near these sites and some night works may be required when traffic and sewer flows are at their lowest.

## Will you block access to my property?

Access to properties will be available at all times and no driveways will be blocked. If we need to do work in front of your property, we will notify you in the weeks before to make arrangements. We may need to ask some customers with on-street parking to park their car in an alternative location at times.

## Will you need access to my property?

No, we do not need access to any private properties.

## Will the work be noisy?

Noise will be generated from motor vehicles, machinery and generators. Some noise is expected as part of the night works. We will do as much as possible to reduce these impacts, including setting up sound matting around generators and site barriers.

## Why do you need to do night works?

Some works must be carried out overnight, as this is when sewer flows are at their lowest. It is also when traffic flows are at their lowest. This makes it the safest time for crews to be working in the busier streets and reduces the impact on the wider traffic network.

## Will there be delays to the project?

Due to the nature of the work and our focus on safety for both our community and crew, during wet weather our works will shut down, this may cause delays to how long we are working in front of your property and to the length of the whole project. We will keep the community informed if the finish dates are going to change.

## Will there be traffic impacts?

There will be temporary changes to traffic conditions including road closures, parking restrictions and alternative driveway access for some properties.

These changes will be along Murphy Street, River Street, Palmer Street and Burnley Street in Richmond and Denham Street, Power Street and Lynch Street in Hawthorn. Further information will be provided to residents directly affected.

Minor detours may be required for pedestrians and cyclists. We will work with residents and local businesses to keep you updated and to reduce any impacts associated with these temporary changes. Please be careful around the works areas and follow the direction signage.

## Why will the streets be closed?

The Hawthorn Main Sewer runs directly under the roadway along Murphy Street and Burnley Street Richmond and Denham Street, Power Street and Lynch Street Hawthorn. We will be accessing the sewer through the manholes, which are located in these streets.

Some manholes will need to be opened up to the width of the shaft below (approximately 2m x 2m) For the safety of both our community and crew, a work-site will be set up at each of these manholes to complete the works. The work site space around the opened manhole needs to be large enough to fit our equipment, sections of relining pipe for each day's work and be a safe zone for our workers. These sites will take up the full width of the road.

At times it will be necessary to set up at multiple manholes at a time. When doing so, we will make all attempts to minimise the impact to the local community.

## 8 weeks is a long time to close the street. Is this the shortest possible time frame?

The methods we will be using to reline the Hawthorn Main Sewer are the most efficient and will have the least effect on the local community as possible (better alternative to digging up the entire length of the road). Each stage of the project requires time (refer above to *What will the works involve?*). Our crew will be making every endeavour to complete the works in as short a timeframe as possible.

## What detours are in place?

Once a site is set up at a manhole, traffic and parking conditions will be affected near these sites. We will have traffic management set up through the duration of the project. This may include a lane closure or loss of street parking in a particular section, or a road closure, in which case we will set up a detour route.

Residents and businesses will be notified when we are working close to their property to ensure they have enough notice to plan alternative access to their property for themselves and their visitors.

## Why are there pipes running down the street?

You may notice lengths of pipe on the ground during the works, including in the Hawthorn Main Drain (stormwater culvert). These are our sewer bypass pipelines which will be set up for each stage of the project to allow local sewerage services to continue operating at all times while the sewer relining is underway.

Some of these will be several hundred meters in length and will be progressively removed as each section is completed. Pumps and generators will be set up at one end of the bypass pipeline to manage the sewage flows.

For detailed information on where the bypasses will be set up please follow our works on the Hawthorn Sewer Upgrade webpage [www.melbournewater.com.au/hawthorn](http://www.melbournewater.com.au/hawthorn)

## Will the bypass affect access to my property?

Access to properties will be maintained and pipelines will be buried when crossing driveways and roads. There may be some driveways or sections of road that will need to be dug up in order to bury the bypass pipelines. All affected driveways/roadways will be reinstated once



works are completed. If we need to dig up the driveway of your property, we will notify you before to make arrangements.

### Will pedestrian/bicycle paths be affected?

Some sections of pedestrian/bicycle paths may be required to lay the bypass pipeline. For the most part, the pipelines will be buried. However, in some sections there will be a detour for pedestrians and cyclists in place.

### SEWER UPGRADE INDICATIVE TIMELINE (SUBJECT TO CHANGE)

Date	Where	What	Information
June 2019 – July 2019	Lynch St, Power St & Denham St Hawthorn and Murphy St & Burnley St Richmond	Early works to clean sewer line and manholes and capture CCTV footage of inside sewer	Complete
Mid July 2019 – August 2019	Lynch St & Denham St Hawthorn and Murphy St, Palmer St, River St & Burnley St Richmond	Works to remove internal manhole features – cutting of ladders, etc. compressor and generator on site Underground service locating	Complete
August 2019	David St, Richmond	Set up of site facilities	Complete
November 2019	Lynch St and Power St, Richmond & Denham St, Hawthorn	Set out of sewer bypass	Complete
Late November – Early December 2019	Power St, Richmond & Denham St Hawthorn (manholes 8 – 10)	Relining of sewer	Complete
January – May 2020	Denham St Hawthorn (manholes 4 – 8)	Relining of sewer	GRP method used to reline sewer  One site at a time  Day and night works

March 2020 – May 2020	Murphy St, Richmond (manholes 1 – 3)	Relining of sewer	GRP method used to reline sewer  One Site at a time  Day and night works
April 2020	Bridge Rd, River St, Blazey St, Vaughan St, Crown St, Palmer St and Burnley St, Richmond	Set out of bypass for relining works	Excavator/ backhoe to move pipe and weld together  Road cutting/ jackhammering  Day and night works
May 2020	Murphy St & Burnley St, Richmond (manholes 1 – 23)	Relining of sewer	CIPP method used to reline sewer  48 hours continuous per line
Ongoing throughout works	Lynch St, Power St & Denham St Hawthorn and Murphy St & Burnley St Richmond	Manhole rehabilitation	Putting ladders etc back in and coating internal walls
Ongoing throughout works	Full alignment	Reinstatement works	Normal working hours

## Keep up to date with what's happening

For more information about this project please call the project team on **1800 960 911** or email [hawthorn.sewer@melbournewater.com.au](mailto:hawthorn.sewer@melbournewater.com.au)

For an interpreter, please call the Translating and Interpreting Service (TIS National) on 13 14 50



Interpreter

To contact Melbourne Water phone 131 722 or  
Email [enquiry@melbournewater.com.au](mailto:enquiry@melbournewater.com.au)

For updates, like us on Facebook or visit our website



**Like us**

[facebook.com/Hawthorn Sewer Upgrade](https://facebook.com/HawthornSewerUpgrade)



**Follow us**

[@MelbourneWater](https://twitter.com/MelbourneWater)



**Visit us**

[www.melbournewater.com.au/hawthorn](http://www.melbournewater.com.au/hawthorn)

