

Appendix 6 – Catchment Specific Actions by Management Unit 2008/09 to 2012/13 Werribee Catchment

Management Unit Cherry Creek

Number
7



Cherry Creek was once an ill-defined drainage line with a series of shallow wetlands and ponds on basalt plains populated by native grasses around Laverton and Altona. Total Kms: 17

| Sub-management unit | No. |
|---------------------|-----|
| Cherry Creek | 29 |

| Targets for Management Unit | | | | | |
|-----------------------------|---------------|--------------|---------------------|------------|------|
| | Water quality | Aquatic life | Habitat & stability | Vegetation | Flow |
| Excellent | | | | | |
| Good | | | ● | | |
| Moderate | | | | | ● |
| Poor | ● | ● | | ● | |
| Very poor | | | | | |

| | |
|-------------------|-----|
| Importance | Low |
|-------------------|-----|

| | Current | Target |
|---------------------|---------|--------|
| Condition | Poor | Poor |
| Social Value | High | High |

| Five Year Implementation Target Area | Target |
|--|--------|
| No. rivers with negotiated environmental flow regimes | - |
| No. rivers with improvements made to environmental flow regimes | - |
| Area of streamside land under mgmnt agreement km ² | 0.02 |
| Kilometres of streamside land revegetated | 2.5 |
| Number of fish barriers removed | - |
| Number of sites subject to bed and bank stabilisation | - |
| Kilometres of riparian land subject to weed mgmnt | 4.5 |
| No. of plans developed for Rivers and Creeks of high social value | - |
| Rivers where heritage values protected or improved | - |
| No. of plans developed for rivers and creeks of high environmental value | - |
| No. of investigations to fill data gaps | - |
| No. IRC reaches with instream habitat reinstated | - |

* and ^ denotes action which covers multiple MUs counted as one target in the overall targets.

Program for the Cherry Creek Management Unit Specific to Sub-Management Unit

| Sub-Mgt Unit | Program | Action | Lead responsibility | Partners | Costs (MW only) |
|--------------|---------------------|---|---------------------|---------------------|-----------------|
| Cherry Creek | Riparian Management | In partnership with government agencies, local land managers and community groups undertake riparian management with reference to local waterway plans where they exist | Melbourne Water | Agencies, Community | \$157,000 |

Appendix 6 – Catchment Specific Actions by Management Unit 2008/09 to 2012/13

Werribee Catchment

Management Unit
Laverton

Number
42



Laverton Creek originates in a semi rural area and passes through urban and industrial areas before discharging to Port Phillip Bay at Altona. Total Kms: 56

| Targets for Management Unit | | | | | |
|-----------------------------|---------------|--------------|---------------------|------------|------|
| | Water quality | Aquatic life | Habitat & stability | Vegetation | Flow |
| Excellent | | | | | |
| Good | ● | | ● | | ● |
| Moderate | ● | | | | |
| Poor | | ● | | ● | |
| Very poor | | | | | |

| | |
|-------------------|-----|
| Importance | Low |
|-------------------|-----|

| | Current | Target |
|---------------------|----------|----------|
| Condition | Moderate | Moderate |
| Social Value | Moderate | Moderate |

| Five Year Implementation Target Area | Target |
|--|--------|
| No. rivers with negotiated environmental flow regimes | - |
| No. rivers with improvements made to environmental flow regimes | - |
| Area of streamside land under mgmnt agreement km ² | 0.04 |
| Kilometres of streamside land revegetated | 4.4 |
| Number of fish barriers removed | - |
| Number of sites subject to bed and bank stabilisation | - |
| Kilometres of riparian land subject to weed mgmnt | 8.0 |
| No. of plans developed for Rivers and Creeks of high social value | - |
| Rivers where heritage values protected or improved | - |
| No. of plans developed for rivers and creeks of high environmental value | - |
| No. of investigations to fill data gaps | - |
| No. IRC reaches with instream habitat reinstated | - |

* and ^ denotes action which covers multiple MUs counted as one target in the overall targets.

| Sub-management unit | No. |
|---------------------|-----|
| Laverton | 55 |

Program for the Laverton Management Unit Specific to Sub-Management Unit

| Sub-Mgt Unit | Program | Action | Lead responsibility | Partners | Costs (MW only) |
|--------------|---------------------|--|---------------------|---------------------|-----------------|
| Laverton | Riparian Management | In partnership with government agencies, local land managers and community groups undertake riparian management to gradually improve conditions and facilitate future rehabilitation with reference to local waterway plans where they exist | Melbourne Water | Agencies, Community | \$281,000 |

Management Unit
Lerderderg River

Number
16

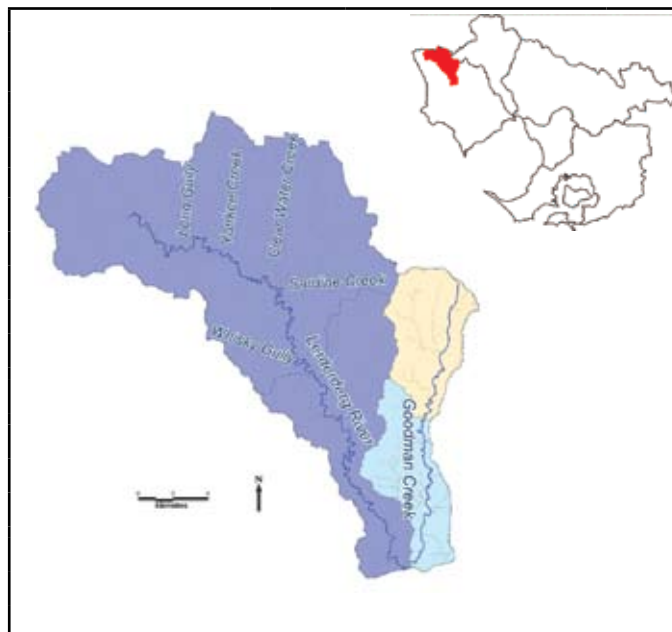
| Targets for Management Unit | | | | | |
|-----------------------------|---------------|--------------|---------------------|------------|------|
| | Water quality | Aquatic life | Habitat & stability | Vegetation | Flow |
| Excellent | | | | | |
| Good | ● | ● | ● | ● | ● |
| Moderate | | | | ● | |
| Poor | | | | | |
| Very poor | | | | | |

| | |
|-------------------|-----------|
| Importance | Very High |
|-------------------|-----------|

| | Current | Target |
|---------------------|---------|--------|
| Condition | Good | Good |
| Social Value | High | High |

| Five Year Implementation Target Area | Target |
|--|--------|
| No. rivers with negotiated environmental flow regimes | 1* |
| No. rivers with improvements made to environmental flow regimes | 1* |
| Area of streamside land under mgmnt agreement km ² | 0.10 |
| Kilometres of streamside land revegetated | 10.9 |
| Number of fish barriers removed | 1 |
| Number of sites subject to bed and bank stabilisation | 1 |
| Kilometres of riparian land subject to weed mgmnt | 19.9 |
| No. of plans developed for Rivers and Creeks of high social value | 2^ |
| Rivers where heritage values protected or improved | - |
| No. of plans developed for rivers and creeks of high environmental value | 2^ |
| No. of investigations to fill data gaps | 3 |
| No. IRC reaches with instream habitat reinstated | - |

* and ^ denotes action which covers multiple MUs counted as one target in the overall targets.



This area includes the Lerderderg River and Goodmans Creek, which originate in the Wombat State Forest and travel through forested and agricultural land and Bacchus March before joining the Werribee River. Total Kms: 77

| Sub-management unit | No. | Sub-management unit | No. |
|---------------------|-----|---------------------|-----|
| Goodman Lower | 126 | Goodman Upper | 127 |
| Lerderderg Middle | 118 | Lerderderg Middle | 119 |

Program for the Lerderderg River Management Unit General

| Program | Action | Lead responsibility | Partners | Costs (MW only) |
|--|---|---------------------|---------------------|-----------------|
| Investigations (not Goodman Lower) | Undertake stream health investigations to fill the data gaps | Melbourne Water | | \$60,000 |
| Plans | Develop Goodman Creek Waterway Plan | Melbourne Water | Agencies, Community | \$90,000 |
| Riparian Management (not Lerderderg Upper) | In partnership with government agencies, local land managers and community groups undertake riparian management with reference to local waterway plans where they exist | Melbourne Water | Agencies, Community | \$406,000 |
| Riparian Management | Target riparian zone management to areas of remnant vegetation and/or creation of habitat links | Melbourne Water | Community | \$288,000 |

Program for the Lerderderg River Management Unit Specific to Sub-Management Unit

| Sub-Mgt Unit | Program | Action | Lead responsibility | Partners | Costs (MW only) |
|-------------------|---------------------|--|---------------------|--|-----------------|
| Goodman Lower | Channel Form | Investigate bank erosion issues and implement priority actions in Condina 2000 | Melbourne Water | | \$63,000 |
| Goodman Upper | Aquatic Habitat | Investigate barriers and identify appropriate actions for removal where practicable | Melbourne Water | Agencies, Community | \$60,000 |
| | Riparian Management | Investigate opportunities to protect the streamside habitat of the Powerful Owl | Melbourne Water | | Guiding |
| Lerderderg Middle | Aquatic Habitat | Investigate feasibility of establishing fish passage past Melton Reservoir | Melbourne Water | | \$40,000 |
| | Flow Management | Implement proposals for establishing Environmental Water Reserve in Central Region Sustainable Water Strategy. | Melbourne Water | Water authorities & Sustainability & Environment | \$4,000 |
| | Riparian Management | Investigate opportunities to protect the streamside habitat of the Powerful Owl | Melbourne Water | Community | Guiding |
| Lerderderg Upper | Flow Management | Implement proposals for establishing Environmental Water Reserve in Central Region Sustainable Water Strategy | Melbourne Water | Water authorities & Sustainability & Environment | \$4,000 |
| | Riparian Management | Investigate opportunities to protect the streamside habitat of the Powerful Owl | Melbourne Water | Community | Guiding |

Appendix 6 – Catchment Specific Actions by Management Unit 2008/09 to 2012/13

Werribee Catchment

Management Unit
Little River

Number
17

| Targets for Management Unit | | | | | |
|-----------------------------|---------------|--------------|---------------------|------------|------|
| | Water quality | Aquatic life | Habitat & stability | Vegetation | Flow |
| Excellent | | | | | ● |
| Good | ● | ● | | ● | |
| Moderate | | | | ● | |
| Poor | | | ● | | |
| Very poor | | | | | |

Importance Moderate

| | Current | Target |
|---------------------|----------|----------|
| Condition | Moderate | Moderate |
| Social Value | High | High |

| Five Year Implementation Target Area | Target |
|--|--------|
| No. rivers with negotiated environmental flow regimes | - |
| No. rivers with improvements made to environmental flow regimes | - |
| Area of streamside land under mgmnt agreement km ² | 0.06 |
| Kilometres of streamside land revegetated | 7.2 |
| Number of fish barriers removed | - |
| Number of sites subject to bed and bank stabilisation | - |
| Kilometres of riparian land subject to weed mgmnt | 13.0 |
| No. of plans developed for Rivers and Creeks of high social value | 1 |
| Rivers where heritage values protected or improved | - |
| No. of plans developed for rivers and creeks of high environmental value | - |
| No. of investigations to fill data gaps | - |
| No. IRC reaches with instream habitat reinstated | - |

* and ^ denotes action which covers multiple MUs counted as one target in the overall targets.



Little River rises in the northern section of the Brisbane Ranges National Park and flows through the townships of Balliang and Little River before joining Port Phillip Bay at the Western Treatment Plant. Total Kms: 99

| Sub-management unit | No. | Sub-management unit | No. |
|---------------------|-----|---------------------|-----|
| Lower Little River | 100 | Middle Little River | 101 |
| Upper Little River | 102 | | |

Program for the Little River Management Unit General

| Program | Action | Lead responsibility | Partners | Costs (MW only) |
|--------------------------------|---|---------------------|--|-----------------|
| Flow Management | Implement recommendations from the Little River Environmental Flow Study | Melbourne Water | Water authorities & Sustainability & Environment | \$60,000 |
| Plans (not Lower Little River) | Develop the Little River Waterway Plan | Melbourne Water | Agencies, Community | \$50,000 |
| Riparian Management | In partnership with government agencies, local land managers and community groups undertake riparian management with reference to local waterway plans where they exist | Melbourne Water | Agencies, Community | \$419,000 |
| | Investigate opportunities to protect River Red Gum communities | Melbourne Water | Local Govt | \$39,000 |

Management Unit

Lower Kororoit Creek

Number

40

| Targets for Management Unit | | | | | |
|-----------------------------|---------------|--------------|---------------------|------------|------|
| | Water quality | Aquatic life | Habitat & stability | Vegetation | Flow |
| Excellent | | | ● | | |
| Good | | | | | |
| Moderate | | ● | | ● | |
| Poor | ● | | | | |
| Very poor | | | | ● | ● |

| | |
|-------------------|------|
| Importance | High |
|-------------------|------|

| | Current | Target |
|---------------------|----------|----------|
| Condition | Poor | Moderate |
| Social Value | Moderate | Moderate |

| Five Year Implementation Target Area | Target |
|--|--------|
| No. rivers with negotiated environmental flow regimes | - |
| No. rivers with improvements made to environmental flow regimes | - |
| Area of streamside land under mgmnt agreement km ² | 0.15 |
| Kilometres of streamside land revegetated | 17.3 |
| Number of fish barriers removed | 1 |
| Number of sites subject to bed and bank stabilisation | - |
| Kilometres of riparian land subject to weed mgmnt | 31.4 |
| No. of plans developed for Rivers and Creeks of high social value | - |
| Rivers where heritage values protected or improved | - |
| No. of plans developed for rivers and creeks of high environmental value | - |
| No. of investigations to fill data gaps | - |
| No. IRC reaches with instream habitat reinstated | 1 |

* and ^ denotes action which covers multiple MUs counted as one target in the overall targets.



Kororoit Creek enters the western urban areas of Melbourne at Caroline Springs and Deer Park. It then passes through substantial areas of industrial land use and other urban areas before meeting the Bay at Altona. Total Kms: 68

| Sub-management unit | No. |
|---------------------|-----|
| Kororoit Creek | 51 |

Program for the Lower Kororoit Creek Management Unit Specific to Sub-Management Unit

| Sub-Mgt Unit | Program | Action | Lead responsibility | Partners | Costs (MW only) |
|----------------|---------------------|---|---------------------|---------------------|-----------------|
| Kororoit Creek | Aquatic Habitat | Investigate extent of fish barriers in Kororoit Creek | Melbourne Water | | \$60,000 |
| | | Investigate opportunities for improving native fish habitat including investigation of the feasibility of reintroducing large woody debris and increasing diversity in channel habitats | Melbourne Water | | \$70,000 |
| | Flow Management | Implement Kororoit Creek Local Management Rules to manage private licensed water use | Melbourne Water | Private Diverters | \$200 |
| | Riparian Management | Investigate opportunities to protect River Red Gum and White Mangrove communities | Melbourne Water | Local Govt | \$18,000 |
| | | In partnership with government agencies, local land managers and community groups undertake riparian management with reference to local waterway plans where they exist | Melbourne Water | Agencies, Community | \$1,083,000 |

Appendix 6 – Catchment Specific Actions by Management Unit 2008/09 to 2012/13

Werribee Catchment

Management Unit
Lower Werribee

Number
22

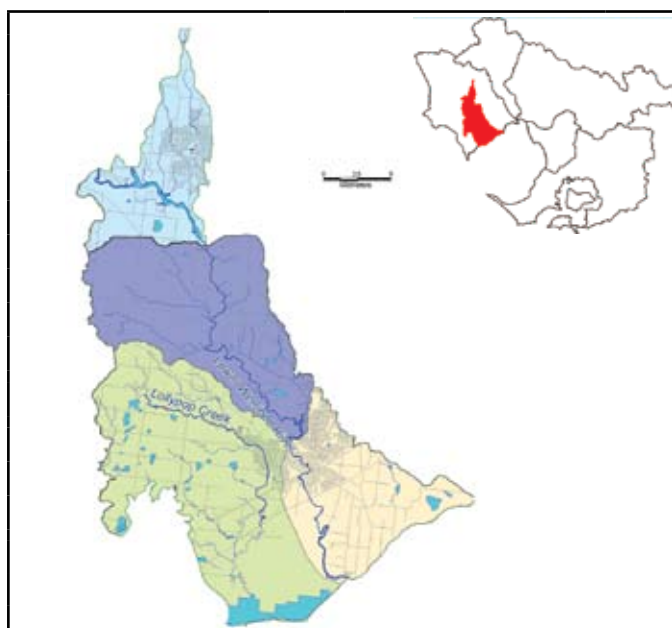
| Targets for Management Unit | | | | | |
|-----------------------------|---------------|--------------|---------------------|------------|------|
| | Water quality | Aquatic life | Habitat & stability | Vegetation | Flow |
| Excellent | | | | | |
| Good | ● | ● | ● | ● | |
| Moderate | | | ● | ● | |
| Poor | | | | ● | ● |
| Very poor | | | | | |

Importance Very High

| | Current | Target |
|---------------------|---------|----------|
| Condition | Poor | Moderate |
| Social Value | High | High |

| Five Year Implementation Target Area | Target |
|--|--------|
| No. rivers with negotiated environmental flow regimes | 1* |
| No. rivers with improvements made to environmental flow regimes | 1* |
| Area of streamside land under mgmnt agreement km ² | 0.28 |
| Kilometres of streamside land revegetated | 16.6 |
| Number of fish barriers removed | 2 |
| Number of sites subject to bed and bank stabilisation | - |
| Kilometres of riparian land subject to weed mgmnt | 30.3 |
| No. of plans developed for Rivers and Creeks of high social value | - |
| Rivers where heritage values protected or improved | - |
| No. of plans developed for rivers and creeks of high environmental value | - |
| No. of investigations to fill data gaps | 1 |
| No. IRC reaches with instream habitat reinstated | - |

* and ^ denotes action which covers multiple MUs counted as one target in the overall targets.



This area includes the lower Werribee River and Lollipop Creek. The lower Werribee runs through Werribee and the Western Treatment Plant before it flows into Port Phillip Bay. Total Kms: 91

| Sub-management unit | No. | Sub-management unit | No. |
|---------------------------|-----|---------------------|-----|
| Lollipop | 166 | Lower Werribee | 104 |
| Werribee Melton Reservoir | 105 | Werribee Outfall | 103 |

Program for the Lower Werribee Management Unit General

| Program | Action | Lead responsibility | Partners | Costs (MW only) |
|---------------------|---|---------------------|--|-----------------|
| Flow Management | Implement proposals for establishing Environmental Water Reserve in Central Region Sustainable Water Strategy | Melbourne Water | Water authorities & Sustainability & Environment | \$12,000 |
| Riparian Management | In partnership with government agencies, local land managers and community groups undertake riparian management with reference to local waterway plans where they exist | Melbourne Water | Agencies, Community | \$905,000 |

Program for the Lower Werribee Management Unit Specific to Sub-Management Unit

| Sub-Mgt Unit | Program | Action | Lead responsibility | Partners | Costs (MW only) |
|---|---------------------|--|---|----------------------|-----------------|
| Lower Werribee | Aquatic Habitat | Investigate the extent of fish barriers and identify opportunities for removal | Melbourne Water | | \$60,000 |
| | | Investigate opportunities to improve native fish habitat | Melbourne Water | | Guiding |
| | Flow Management | Enhance the Environmental Water Reserve in the Werribee River through implementation of the Werribee Irrigation District Recycled Water Scheme and develop an annual 'watering plan' to manage the use of increased flows | Sustainability & Environment, Melbourne Water | Southern Rural Water | \$25,000 |
| | Investigations | Undertake stream health investigations to fill the data gaps | Melbourne Water | | \$20,000 |
| | Riparian Management | Investigate opportunities to protect River Red Gum communities and improve habitat for Platypus | Melbourne Water | | Guiding |
| Target riparian zone management to areas of remnant vegetation and/or creation of habitat links | | Melbourne Water | | \$78,000 | |
| Werribee Melton Reservoir | Riparian Management | Target riparian zone management to areas of remnant vegetation and/or creation of habitat links | Melbourne Water | | \$78,000 |
| Werribee Outfall | Aquatic Habitat | Investigate extent of fish barriers associated with road crossings | Melbourne Water | | \$60,000 |
| | | Investigate opportunities to improve native fish habitat | Melbourne Water | | Guiding |
| | Flow Management | Enhance the Environmental Water Reserve in the Werribee River through implementation of the Werribee Irrigation District Recycled Water Scheme, and develop an annual 'watering plan' to manage the use of increased flows | Sustainability & Environment, Melbourne Water | Southern Rural Water | \$25,000 |
| | | Implement priority recommendations from the Werribee River estuary environmental flow requirement study. | Melbourne Water | | \$15,000 |
| | Riparian Management | Investigate opportunities to protect River Red Gum communities and improve habitat for Platypus | Melbourne Water | | Guiding |

Management Unit
Middle Werribee

Number
61

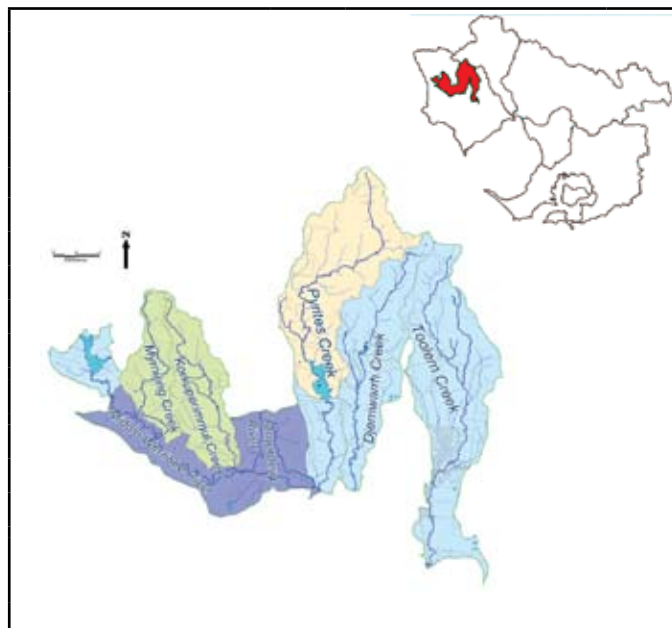
| Targets for Management Unit | | | | | |
|-----------------------------|---------------|--------------|---------------------|------------|------|
| | Water quality | Aquatic life | Habitat & stability | Vegetation | Flow |
| Excellent | ● | ● | | | |
| Good | ● | ● | ● | ● | ● |
| Moderate | | | ● | ● | |
| Poor | | | | | |
| Very poor | | | | | |

| | |
|-------------------|-----------|
| Importance | Very High |
|-------------------|-----------|

| | | |
|---------------------|----------|--------|
| | Current | Target |
| Condition | Moderate | Good |
| Social Value | Moderate | High |

| Five Year Implementation Target Area | Target |
|--|--------|
| No. rivers with negotiated environmental flow regimes | 1* |
| No. rivers with improvements made to environmental flow regimes | 1* |
| Area of streamside land under mgmnt agreement km ² | 0.48 |
| Kilometres of streamside land revegetated | 55.9 |
| Number of fish barriers removed | 4 |
| Number of sites subject to bed and bank stabilisation | 4 |
| Kilometres of riparian land subject to weed mgmnt | 101.7 |
| No. of plans developed for Rivers and Creeks of high social value | 2^ |
| Rivers where heritage values protected or improved | - |
| No. of plans developed for rivers and creeks of high environmental value | 2^ |
| No. of investigations to fill data gaps | 8 |
| No. IRC reaches with instream habitat reinstated | - |

* and ^ denotes action which covers multiple MUs counted as one target in the overall targets.



This section of the Werribee River rises near Ballan and runs towards Myrning, Bacchus Marsh and Melton. It includes the Pykes and Melton reservoirs, which service Melton, Bacchus Marsh. Total Kms: 270

| Sub-management unit | No. | Sub-management unit | No. |
|---------------------|-----|---------------------|-----|
| Djerriwarrh | 114 | Djerriwarrh Forest | 113 |
| Korkuperimmul | 120 | Lerderderg Lower | 117 |
| Lower Toolern | 111 | Myrning | 121 |
| Pykes Reservoir | 122 | Pyrites Lower | 115 |
| Pyrites Upper | 116 | Toolern | 112 |
| Werribee Gorge | 106 | | |

Program for the Middle Werribee Management Unit General

| Program | Action | Lead responsibility | Partners | Costs (MW only) |
|--|---|---------------------|--|-----------------|
| Flow Management (not Pykes Reservoir) | Implement proposals for establishing Environmental Water Reserve in Central Region Sustainable Water Strategy | Melbourne Water | Water authorities & Sustainability & Environment | \$40,000 |
| Investigations (not Toolern, Lower Toolern or Pykes Reservoir) | Undertake stream health investigations to fill the data gaps | Melbourne Water | | \$160,000 |

Program for the Middle Werribee Management Unit Specific to Sub-Management Unit

| Sub-Mgt Unit | Program | Action | Lead responsibility | Partners | Costs (MW only) |
|--------------------|---------------------|---|---------------------|---------------------|-----------------|
| Djerriwarrh | Aquatic Habitat | Investigate fish barriers and identify opportunities for removal | Melbourne Water | | \$60,000 |
| | Plans | Develop the Upper Werribee Eastern Tributaries Waterway Plan | Melbourne Water | Agencies, Community | \$10,000 |
| | Riparian Management | Investigate opportunities to protect the riparian habitats of the Wedge Tailed Eagle | Melbourne Water | | Guiding |
| | | In partnership with government agencies, local land managers and community groups undertake riparian management with reference to local waterway plans where they exist | Melbourne Water | Agencies, Community | \$118,000 |
| | | Target riparian zone management to areas of remnant vegetation and/or creation of habitat links | Melbourne Water | | \$78,000 |
| Djerriwarrh Forest | Aquatic Habitat | Investigate fish barriers and identify opportunities for removal | Melbourne Water | | \$60,000 |
| | Channel Form | Investigate bed and bank erosion issue and implement priority actions in Condina (2000) | Melbourne Water | | \$500,000 |
| | Plans | Develop the Upper Werribee Eastern Tributaries Waterway Plan | Melbourne Water | Agencies, Community | \$10,000 |
| | Riparian Management | Target riparian zone management to areas of remnant vegetation and/or creation of habitat links | Melbourne Water | | \$78,000 |

Appendix 6 – Catchment Specific Actions by Management Unit 2008/09 to 2012/13

Werribee Catchment

Program for the Middle Werribee Management Unit Specific to Sub-Management Unit

| Sub-Mgt Unit | Program | Action | Lead responsibility | Partners | Costs (MW only) |
|------------------|---------------------|--|--------------------------------------|---------------------|-----------------|
| Korkuperimmul | Channel Form | Investigate bed and bank stability and implement priority actions Condina 2000 | Melbourne Water | | \$336,000 |
| | Riparian Management | In partnership with government agencies, local land managers and community groups undertake riparian management to gradually improve conditions and facilitate future rehabilitation with reference to local waterway plans where they exist | Melbourne Water, Agencies, Community | Agencies, Community | \$126,000 |
| Lerderderg Lower | Aquatic Habitat | Create opportunities for improving Platypus habitat | Melbourne Water | Partners | Guiding |
| | Plans | Develop Lerderderg River Waterway Plan | Melbourne Water | Agencies, Community | \$20,000 |
| | Riparian Management | In partnership with government agencies, local land managers and community groups undertake riparian management with reference to local waterway plans where they exist | Melbourne Water | Agencies, Community | \$59,000 |
| | | Target riparian zone management to areas of remnant vegetation and/or creation of habitat links | Melbourne Water | | \$78,000 |
| Lower Toolern | Plans | Develop the Upper Werribee Eastern Tributaries Waterway Plan | Melbourne Water | Agencies, Community | \$10,000 |
| | Riparian Management | Investigate opportunities to protect River Red Gum communities | Melbourne Water | | Guiding |
| | | In partnership with government agencies, local land managers and community groups undertake riparian management with reference to local waterway plans where they exist | Melbourne Water | Agencies, Community | \$875,000 |
| Myrniong | Channel Form | Investigate bed and bank stability issues and implement priority actions in Condina 2000 | Melbourne Water | | \$785,000 |
| | Riparian Management | In partnership with government agencies, local land managers and community groups undertake riparian management with reference to local waterway plans where they exist | Melbourne Water | Agencies, Community | \$185,000 |
| Pykes Reservoir | Channel Form | Investigate bank erosion issues and implement priority actions in Condina 2000 | Melbourne Water | | \$336,000 |
| | Riparian Management | In partnership with government agencies, local land managers and community groups undertake riparian management to gradually improve conditions and facilitate future rehabilitation with reference to local waterway plans where they exist | Melbourne Water | Agencies, Community | \$66,000 |
| | | Target riparian zone management to areas of remnant vegetation and/or creation of habitat links | Melbourne Water | | \$78,000 |
| Pyrites Lower | Aquatic Habitat | Identify fish barriers and investigate opportunities for removal | Melbourne Water | | \$60,000 |
| | Plans | Develop the Upper Werribee Eastern Tributaries Waterway Plan | Melbourne Water | Agencies, Community | \$10,000 |
| | Riparian Management | In partnership with government agencies, local land managers and community groups undertake riparian management with reference to local waterway plans where they exist | Melbourne Water | Agencies, Community | \$102,000 |
| | | Target riparian zone management to areas of remnant vegetation and/or creation of habitat links | Melbourne Water | | \$78,000 |
| Pyrites Upper | Aquatic Habitat | Identify fish barriers and investigate opportunities for removal | Melbourne Water | | \$60,000 |
| | Plans | Develop the Upper Werribee Eastern Tributaries Waterway Plan | Melbourne Water | Agencies, Community | \$10,000 |
| | Riparian Management | Target riparian zone management to areas of remnant vegetation and/or creation of habitat links | Melbourne Water | | \$125,000 |
| Toolern | Channel Form | Investigate bed and bank stability issues and implement priority actions in Condina et al (2000) | Melbourne Water | | \$688,000 |
| | Plans | Develop the Upper Werribee Eastern Tributaries Waterway Plan | Melbourne Water | Agencies, Community | \$10,000 |
| | Riparian Management | In partnership with government agencies, local land managers and community groups undertake riparian management with reference to local waterway plans where they exist | Melbourne Water | Agencies, Community | \$75,000 |
| Werribee Gorge | Riparian Management | Investigate opportunities to protect River Red Gum communities and improve habitat for Platypus | Melbourne Water | Community | Guiding |
| | | In partnership with government agencies, local land managers and community groups undertake riparian management with reference to local waterway plans where they exist | Melbourne Water | Agencies, Community | \$1,457,000 |
| | | Target riparian zone management to areas of remnant vegetation and/or creation of habitat links | Melbourne Water | Community | \$125,000 |

Management Unit
Parwan Creek

Number
28

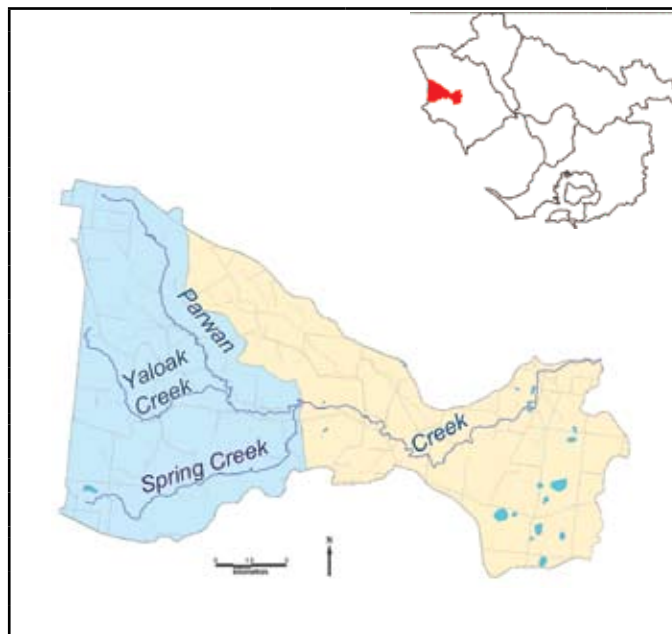
| Targets for Management Unit | | | | | |
|-----------------------------|---------------|--------------|---------------------|------------|------|
| | Water quality | Aquatic life | Habitat & stability | Vegetation | Flow |
| Excellent | | ● | | | |
| Good | ● | ● | | | ● |
| Moderate | ● | | | ● | |
| Poor | | | ● | | |
| Very poor | | | | | |

| | |
|-------------------|-----|
| Importance | Low |
|-------------------|-----|

| | | |
|---------------------|----------|--------|
| | Current | Target |
| Condition | Moderate | Good |
| Social Value | Low | Low |

| Five Year Implementation Target Area | Target |
|--|--------|
| No. rivers with negotiated environmental flow regimes | 1* |
| No. rivers with improvements made to environmental flow regimes | 1* |
| Area of streamside land under mgmnt agreement km ² | 0.04 |
| Kilometres of streamside land revegetated | 4.5 |
| Number of fish barriers removed | - |
| Number of sites subject to bed and bank stabilisation | 1 |
| Kilometres of riparian land subject to weed mgmnt | 8.1 |
| No. of plans developed for Rivers and Creeks of high social value | 1 |
| Rivers where heritage values protected or improved | - |
| No. of plans developed for rivers and creeks of high environmental value | - |
| No. of investigations to fill data gaps | - |
| No. IRC reaches with instream habitat reinstated | - |

* and ^ denotes action which covers multiple MUs counted as one target in the overall targets.



Parwan Creek rises near Fiskville and runs in an easterly direction towards Rowsley before joining the Werribee River south of Bacchus Marsh. Total Kms: 63

| Sub-management unit | No. | Sub-management unit | No. |
|---------------------|-----|-----------------------|-----|
| Parwan Creek Lower | 109 | Upper Parwan & Spring | 110 |

Program for the Parwan Creek Management Unit General

| Program | Action | Lead responsibility | Partners | Costs (MW only) |
|---------------------|--|---------------------|--|-----------------|
| Flow Management | Implement proposals for establishing Environmental Water Reserve in Central Region Sustainable Water Strategy. | Melbourne Water | Water authorities & Sustainability & Environment | \$8,000 |
| Plans | Develop the Parwan River Waterway Plan | Melbourne Water | Agencies, Community | \$50,000 |
| Riparian Management | In partnership with government agencies, local land managers and community groups undertake riparian management to gradually improve conditions and facilitate future rehabilitation with reference to local waterway plans where they exist | Melbourne Water | Agencies, Community | \$285,000 |

Program for the Parwan Creek Management Unit Specific to Sub-Management Unit

| Sub-Mgt Unit | Program | Action | Lead responsibility | Partners | Costs (MW only) |
|-----------------------|-----------------|--|---------------------|----------|-----------------|
| Parwan Creek Lower | Aquatic Habitat | Create opportunities to improve habitat for the Growling Grass Frog | Melbourne Water | | Guiding |
| Upper Parwan & Spring | Channel Form | Investigate extent of bed and bank erosion issue and identify appropriate management solutions | Melbourne Water | | \$594,000 |

Management Unit
Skeleton Creek

Number
51

| Targets for Management Unit | | | | | |
|-----------------------------|---------------|--------------|---------------------|------------|------|
| | Water quality | Aquatic life | Habitat & stability | Vegetation | Flow |
| Excellent | | | ● | | |
| Good | ● | ● | | | ● |
| Moderate | ● | | | | |
| Poor | | | | | |
| Very poor | | | | ● | |

| | |
|-------------------|-----|
| Importance | Low |
|-------------------|-----|

| | Current | Target |
|---------------------|----------|----------|
| Condition | Moderate | Moderate |
| Social Value | Low | Moderate |

| Five Year Implementation Target Area | Target |
|--|--------|
| No. rivers with negotiated environmental flow regimes | - |
| No. rivers with improvements made to environmental flow regimes | - |
| Area of streamside land under mgmnt agreement km ² | 0.06 |
| Kilometres of streamside land revegetated | 7.1 |
| Number of fish barriers removed | - |
| Number of sites subject to bed and bank stabilisation | - |
| Kilometres of riparian land subject to weed mgmnt | 13.0 |
| No. of plans developed for Rivers and Creeks of high social value | - |
| Rivers where heritage values protected or improved | - |
| No. of plans developed for rivers and creeks of high environmental value | - |
| No. of investigations to fill data gaps | - |
| No. IRC reaches with instream habitat reinstated | - |

* and ^ denotes action which covers multiple MUs counted as one target in the overall targets.



Skeleton Creek originates in a rural area near Mt Cottrell and passes through urban areas before discharging to Port Phillip Bay. Total Kms: 77

| Sub-management unit | No. |
|---------------------|-----|
| Skeleton Creek | 80 |

Program for the Skeleton Creek Management Unit Specific to Sub-Management Unit

| Sub-Mgt Unit | Program | Action | Lead responsibility | Partners | Costs (MW only) |
|----------------|---------------------|--|---------------------|---------------------|-----------------|
| Skeleton Creek | Riparian Management | In partnership with government agencies, local land managers and community groups undertake riparian management to gradually improve conditions and facilitate future rehabilitation with reference to local waterway plans where they exist | Melbourne Water | Agencies, Community | \$455,000 |

Management Unit

Upper Kororoit Creek

Number

41

| Targets for Management Unit | | | | | |
|-----------------------------|---------------|--------------|---------------------|------------|------|
| | Water quality | Aquatic life | Habitat & stability | Vegetation | Flow |
| Excellent | | | | | |
| Good | | | ● | | |
| Moderate | ● | ● | | ● | ● |
| Poor | | | | ● | |
| Very poor | | | | | |

| | |
|-------------------|----------|
| Importance | Moderate |
|-------------------|----------|

| | | |
|---------------------|---------|----------|
| | Current | Target |
| Condition | Poor | Poor |
| Social Value | Low | Moderate |

| Five Year Implementation Target Area | Target |
|--|--------|
| No. rivers with negotiated environmental flow regimes | - |
| No. rivers with improvements made to environmental flow regimes | 1 |
| Area of streamside land under mgmnt agreement km ² | 0.07 |
| Kilometres of streamside land revegetated | 8.0 |
| Number of fish barriers removed | 3 |
| Number of sites subject to bed and bank stabilisation | - |
| Kilometres of riparian land subject to weed mgmnt | 14.6 |
| No. of plans developed for Rivers and Creeks of high social value | - |
| Rivers where heritage values protected or improved | - |
| No. of plans developed for rivers and creeks of high environmental value | - |
| No. of investigations to fill data gaps | 2 |
| No. IRC reaches with instream habitat reinstated | - |

* and ^ denotes action which covers multiple MUs counted as one target in the overall targets.



Arising in the rural foothills of the Great Divide around Gisborne and Sunbury, Kororoit Creek comprises two main branches, Eastern and Western Kororoit, which join on the basalt plains above Melton. Total Kms: 75

| Sub-management unit | No. | Sub-management unit | No. |
|----------------------------|-----|----------------------------|-----|
| Kororoit Creek East Branch | 128 | Kororoit Creek West Branch | 129 |
| Kororoit Rural | 172 | | |

Program for the Upper Kororoit Creek Management Unit General

| Program | Action | Lead responsibility | Partners | Costs (MW only) |
|---------------------|--|---------------------|---------------------|-----------------|
| Aquatic Habitat | Investigate extent of fish barriers in Kororoit Creek | Melbourne Water | | \$150,000 |
| Flow Management | Implement Kororoit Creek Local Management Rules to manage private licensed water use | Melbourne Water | Private Diversers | \$1,000 |
| Riparian Management | Investigate opportunities to protect River Red Gum communities | Melbourne Water | | Guiding |
| | In partnership with government agencies, local land managers and community groups undertake riparian management to gradually improve conditions and facilitate future rehabilitation with reference to local waterway plans where they exist | Melbourne Water | Agencies, Community | \$357,000 |

Program for the Upper Kororoit Creek Management Unit Specific to Sub-Management Unit

| Sub-Mgt Unit | Program | Action | Lead responsibility | Partners | Costs (MW only) |
|----------------------------|---------------------|---|---------------------|-----------|-----------------|
| Kororoit Creek East Branch | Riparian Management | Target riparian zone management to areas of remnant vegetation and/or creation of habitat links | Melbourne Water | Community | \$78,000 |
| Kororoit Creek West Branch | Investigations | Undertake stream health investigations to fill the data gaps | Melbourne Water | | \$40,000 |
| | Riparian Management | Target riparian zone management to areas of remnant vegetation and/or creation of habitat links | Melbourne Water | | \$78,000 |
| Kororoit Rural | Aquatic Habitat | Investigate opportunities for improving native fish habitat | Melbourne Water | | Guiding |
| | Investigations | Undertake stream health investigations to fill the data gaps | Melbourne Water | | \$80,000 |

Appendix 6 – Catchment Specific Actions by Management Unit 2008/09 to 2012/13

Werribee Catchment

Management Unit

Upper Werribee

Number

36

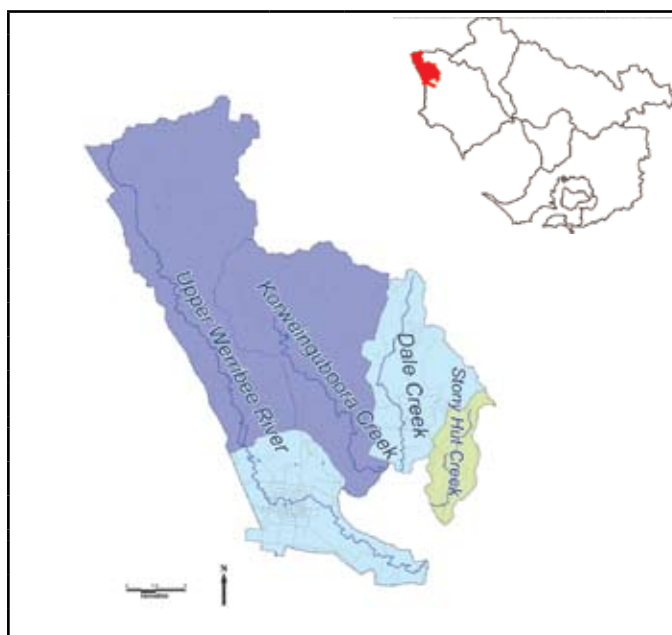
| Targets for Management Unit | | | | | |
|-----------------------------|---------------|--------------|---------------------|------------|------|
| | Water quality | Aquatic life | Habitat & stability | Vegetation | Flow |
| Excellent | | | | | ● |
| Good | ● | | ● | ● | |
| Moderate | | ● | ● | ● | |
| Poor | | | | | |
| Very poor | | | | | |

| | |
|-------------------|-----------|
| Importance | Very High |
|-------------------|-----------|

| | | |
|---------------------|----------|--------|
| | Current | Target |
| Condition | Moderate | Good |
| Social Value | High | High |

| Five Year Implementation Target Area | Target |
|--|--------|
| No. rivers with negotiated environmental flow regimes | 1* |
| No. rivers with improvements made to environmental flow regimes | 1* |
| Area of streamside land under mgmnt agreement km ² | 0.13 |
| Kilometres of streamside land revegetated | 14.8 |
| Number of fish barriers removed | 3 |
| Number of sites subject to bed and bank stabilisation | 3 |
| Kilometres of riparian land subject to weed mgmnt | 26.9 |
| No. of plans developed for Rivers and Creeks of high social value | - |
| Rivers where heritage values protected or improved | - |
| No. of plans developed for rivers and creeks of high environmental value | - |
| No. of investigations to fill data gaps | 2 |
| No. IRC reaches with instream habitat reinstated | - |

* and ^ denotes action which covers multiple MUs counted as one target in the overall targets.



The headwaters of the Werribee River lie in the Wombat State Forest and flow south east to the undulating plains of basalt soils north of Ballan. Korweinguboora and Dale creeks are included in this catchment. Total Kms: 80

| Sub-management unit | No. | Sub-management unit | No. |
|---------------------|-----|---------------------|-----|
| Dale | 124 | Korweinguboora | 125 |
| Stony Hut | 123 | Werribee Headwaters | 108 |
| Werribee Upper | 107 | | |

Program for the Upper Werribee Management Unit Specific to Sub-Management Unit

| Sub-Mgt Unit | Program | Action | Lead responsibility | Partners | Costs (MW only) |
|---------------------|---------------------|--|---------------------|--|-----------------|
| Dale | Aquatic Habitat | Investigate fish barriers and identify opportunities for removal | Melbourne Water | | \$60,000 |
| | Channel Form | Investigate bed and bank erosion issues and implement priority actions in Condina 2000 | Melbourne Water | | \$188,000 |
| | Investigations | Undertake stream health investigations to fill the data gaps | Melbourne Water | | \$20,000 |
| | Riparian Management | In partnership with government agencies, local land managers and community groups undertake riparian management with reference to local waterway plans where they exist | Melbourne Water | Agencies, Community | \$238,000 |
| | | Target riparian zone management to areas of remnant vegetation and/or creation of habitat links | Melbourne Water | | \$78,000 |
| Korweinguboora | Aquatic Habitat | Investigate fish barriers and identify opportunities for removal | Melbourne Water | | \$50,000 |
| | Channel Form | Investigate bank erosion issues and implement priority actions in Condina 2000 | Melbourne Water | | \$250,000 |
| | Riparian Management | In partnership with government agencies, local land managers and community groups undertake riparian management with reference to local waterway plans where they exist | Melbourne Water | Agencies, Community | \$163,000 |
| Stony Hut | Riparian Management | In partnership with government agencies, local land managers and community groups undertake riparian management to gradually improve conditions and facilitate future rehabilitation with reference to local waterway plans where they exist | Melbourne Water | Agencies, Community | \$15,000 |
| Werribee Headwaters | Aquatic Habitat | Investigate fish barriers and identify opportunities for removal | Melbourne Water | | \$60,000 |
| | Investigations | Undertake stream health investigations to fill the data gaps | Melbourne Water | | \$20,000 |
| | Riparian Management | Target riparian zone management to areas of remnant vegetation and/or creation of habitat links | Melbourne Water | | \$125,000 |
| Werribee Upper | Flow Management | Implement proposals for establishing Environmental Water Reserve in Central Region Sustainable Water Strategy. | Melbourne Water | Water authorities & Sustainability & Environment | \$4,000 |
| | Riparian Management | In partnership with government agencies, local land managers and community groups undertake riparian management with reference to local waterway plans where they exist | Melbourne Water | Agencies, Community | \$101,000 |
| | | Target riparian zone management to areas of remnant vegetation and/or creation of habitat links | Melbourne Water | | \$78,000 |