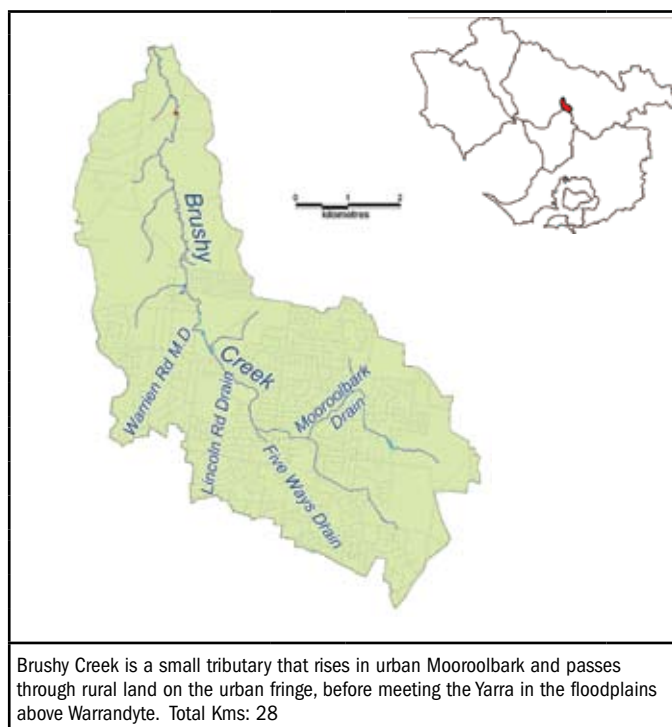


Appendix 6 – Catchment Specific Actions by Management Unit 2008/09 to 2012/13

Yarra Catchment

Management Unit Brushy Creek

Number
5



Sub-management unit	No.
Brushy Creek	24

Targets for Management Unit					
	Water quality	Aquatic life	Habitat & stability	Vegetation	Flow
Excellent					
Good			●		
Moderate					
Poor	●			●	
Very poor		●			●

Importance	Low
-------------------	-----

	Current	Target
Condition	Poor	Poor
Social Value	Low	Low

Five Year Implementation Target Area	Target
No. rivers with negotiated environmental flow regimes	-
No. rivers with improvements made to environmental flow regimes	-
Area of streamside land under mgmnt agreement km ²	0.17
Kilometres of streamside land revegetated	11.2
Number of fish barriers removed	-
Number of sites subject to bed and bank stabilisation	-
Kilometres of riparian land subject to weed mgmnt	24.5
No. of plans developed for Rivers and Creeks of high social value	-
Rivers where heritage values protected or improved	-
No. of plans developed for rivers and creeks of high environmental value	-
No. of investigations to fill data gaps	-
No. IRC reaches with instream habitat reinstated	-

* and ^ denotes action which covers multiple MUs counted as one target in the overall targets.

Program for the Brushy Creek Management Unit Specific to Sub-Management Unit

Sub-Mgt Unit	Program	Action	Lead responsibility	Partners	Costs (MW only)
Brushy Creek	Riparian Management	In partnership with government agencies, local land managers and community groups undertake riparian management with reference to local waterway plans where they exist	Melbourne Water	Agencies, Community	\$1,283,000
		Continue partnership and collaborative approaches to riparian weed management adjacent to Warrandyte State Park	Parks Victoria	Melbourne Water	Guiding

Appendix 6 – Catchment Specific Actions by Management Unit 2008/09 to 2012/13 Yarra Catchment

Management Unit

Darebin Creek (Rural)

Number

14

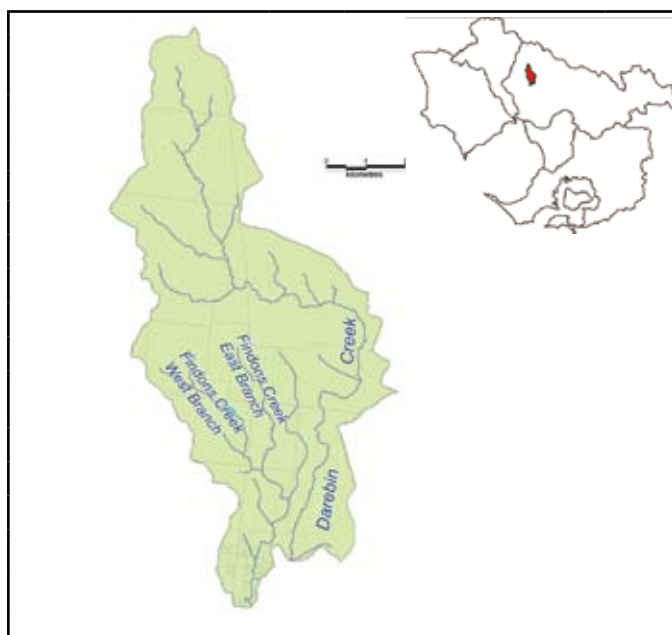
Targets for Management Unit					
	Water quality	Aquatic life	Habitat & stability	Vegetation	Flow
Excellent					●
Good			●		
Moderate		●			
Poor					
Very poor	●			●	

Importance	Low
-------------------	-----

	Current	Target
Condition	Poor	Poor
Social Value	Low	Moderate

Five Year Implementation Target Area	Target
No. rivers with negotiated environmental flow regimes	-
No. rivers with improvements made to environmental flow regimes	-
Area of streamside land under mgmnt agreement km ²	0.02
Kilometres of streamside land revegetated	1.6
Number of fish barriers removed	-
Number of sites subject to bed and bank stabilisation	1
Kilometres of riparian land subject to weed mgmnt	2.9
No. of plans developed for Rivers and Creeks of high social value	-
Rivers where heritage values protected or improved	-
No. of plans developed for rivers and creeks of high environmental value	-
No. of investigations to fill data gaps	-
No. IRC reaches with instream habitat reinstated	-

* and ^ denotes action which covers multiple MUs counted as one target in the overall targets.



Darebin Creek rises on Melbourne's northern outskirts and travels through rural landscapes before entering urban and industrial areas as the creek flows towards Melbourne. Total Kms: 56

Sub-management unit	No.
Darebin Creek Rural	37

Program for the Darebin Creek (Rural) Management Unit Specific to Sub-Management Unit

Sub-Mgt Unit	Program	Action	Lead responsibility	Partners	Costs (MW only)
Darebin Creek Rural	Aquatic Habitat	Undertake habitat enhancement and management of remnant River Red Gums as identified in the Darebin Creek Waterway Activity Plan 2000	Melbourne Water		Guiding
	Channel Form	Undertake Channel Form works in accordance with recommendations of Darebin Creek Waterway Management Activity Plan and as per Drainage Schemes	Melbourne Water		\$375,000
	Flow Management	Implement the Darebin Creek Local Management Rules to manage private licensed water use	Melbourne Water	Private Diverters	\$1,000
	Riparian Management	In partnership with government agencies, local land managers and community groups undertake riparian management to gradually improve conditions and facilitate future rehabilitation with reference to local waterway plans where they exist	Melbourne Water	Agencies, Community	\$100,000

Management Unit

Darebin Creek (Urban)

Number

20

Targets for Management Unit					
	Water quality	Aquatic life	Habitat & stability	Vegetation	Flow
Excellent			●		
Good	●				
Moderate	●				
Poor		●			●
Very poor				●	

Importance	High
-------------------	------

	Current	Target
Condition	Poor	Poor
Social Value	Very High	Very High

Five Year Implementation Target Area	Target
No. rivers with negotiated environmental flow regimes	-
No. rivers with improvements made to environmental flow regimes	-
Area of streamside land under mgmnt agreement km ²	0.34
Kilometres of streamside land revegetated	18.8
Number of fish barriers removed	-
Number of sites subject to bed and bank stabilisation	1
Kilometres of riparian land subject to weed mgmnt	41.1
No. of plans developed for Rivers and Creeks of high social value	-
Rivers where heritage values protected or improved	1
No. of plans developed for rivers and creeks of high environmental value	-
No. of investigations to fill data gaps	-
No. IRC reaches with instream habitat reinstated	-

* and ^ denotes action which covers multiple MUs counted as one target in the overall targets.



Darebin Creek rises on Melbourne's northern outskirts and travels through rural landscapes before entering urban and industrial areas as the creek flows towards Melbourne. Total Kms: 47

Sub-management unit	No.
Darebin Creek Lower	36

Program for the Darebin Creek (Urban) Management Unit Specific to Sub-Management Unit

Sub-Mgt Unit	Program	Action	Lead responsibility	Partners	Costs (MW only)
Darebin Creek Lower	Aquatic Habitat	Create opportunities to protect River Red Gum communities	Melbourne Water		Guiding
	Channel Form	Undertake Channel form works in accordance with recommendations of Darebin Creek Waterway Management Activity Plan	Melbourne Water		\$827,000
	Flow Management	Implement the Darebin Creek Local Management Rules to manage private licensed water use	Melbourne Water	Private Diverters	\$1,000
	Riparian Management	In partnership with government agencies, local land managers and community groups undertake riparian management with reference to local waterway plans where they exist	Melbourne Water	Agencies, Community	\$2,551,000

Appendix 6 – Catchment Specific Actions by Management Unit 2008/09 to 2012/13

Yarra Catchment

Management Unit Diamond Creek (Rural)

Number
25

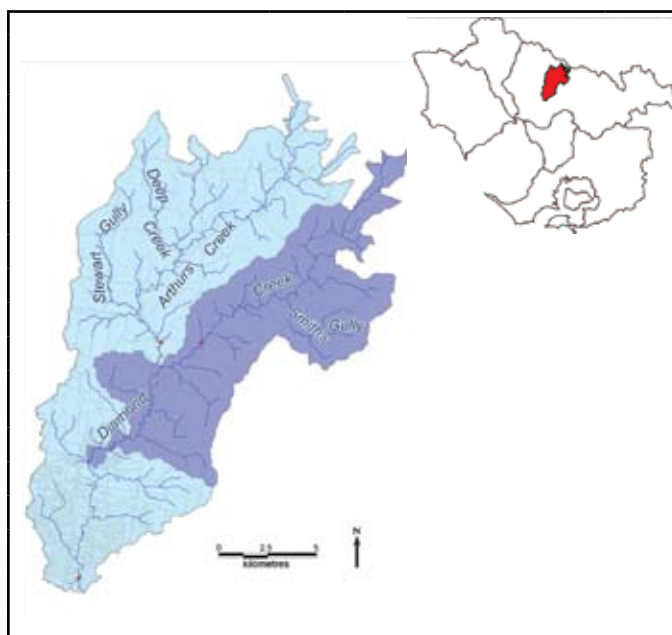
Targets for Management Unit					
	Water quality	Aquatic life	Habitat & stability	Vegetation	Flow
Excellent					▲
Good		▲	●	▲	▲
Moderate	▲	▲		▲	
Poor	▲			▲	
Very poor					

Importance High

	Current	Target
Condition	Moderate	Good
Social Value	Moderate	Moderate

Five Year Implementation Target Area	Target
No. rivers with negotiated environmental flow regimes	1
No. rivers with improvements made to environmental flow regimes	1
Area of streamside land under mgmnt agreement km ²	0.55
Kilometres of streamside land revegetated	64.1
Number of fish barriers removed	-
Number of sites subject to bed and bank stabilisation	3
Kilometres of riparian land subject to weed mgmnt	116.7
No. of plans developed for Rivers and Creeks of high social value	-
Rivers where heritage values protected or improved	-
No. of plans developed for rivers and creeks of high environmental value	-
No. of investigations to fill data gaps	-
No. IRC reaches with instream habitat reinstated	-

* and ^ denotes action which covers multiple MUs counted as one target in the overall targets.



This section includes the Diamond and Arthurs creeks. Both creeks rise in the Kinglake National Park and flow through rural landscapes for most of their length. Total Kms: 258

Sub-management unit	No.	Sub-management unit	No.
Arthurs/Running Creek	22	Diamond Creek Lower	39
Diamond Creek Upper	40		

Program for the Diamond Creek (Rural) Management Unit General

Program	Action	Lead responsibility	Partners	Costs (MW only)
Aquatic Habitat	Investigate opportunities for improving native fish and platypus habitat	Melbourne Water		Guiding
Channel Form	Implement priority actions in Waterway Activity Plan to address bed and bank stability issues at key reach sites	Melbourne Water		\$1,500,000
Flow Management	Review the Diamond Creek Stream Flow Management Plan	Melbourne Water	Sustainability & Environment	\$150,000
Riparian Management	In partnership with government agencies, local land managers and community groups undertake riparian management with reference to local waterway plans where they exist	Melbourne Water	Agencies, Community	\$4,086,000

Program for the Diamond Creek (Rural) Management Unit Specific to Sub-Management Unit

Sub-Mgt Unit	Program	Action	Lead responsibility	Partners	Costs (MW only)
Diamond Creek Lower	Riparian Management	Target riparian zone management to areas of remnant vegetation and/or creation of habitat links	Melbourne Water		Guiding

Management Unit

Diamond Creek (Source)

Number

27

Targets for Management Unit					
	Water quality	Aquatic life	Habitat & stability	Vegetation	Flow
Excellent	●		●	●	●
Good		●	●	●	
Moderate					
Poor					
Very poor					

Importance	Very High
-------------------	-----------

	Current	Target
Condition	Good	Good
Social Value	Low	Low

Five Year Implementation Target Area	Target
No. rivers with negotiated environmental flow regimes	-
No. rivers with improvements made to environmental flow regimes	-
Area of streamside land under mgmnt agreement km ²	-
Kilometres of streamside land revegetated	-
Number of fish barriers removed	-
Number of sites subject to bed and bank stabilisation	-
Kilometres of riparian land subject to weed mgmnt	13.8
No. of plans developed for Rivers and Creeks of high social value	-
Rivers where heritage values protected or improved	-
No. of plans developed for rivers and creeks of high environmental value	-
No. of investigations to fill data gaps	2
No. IRC reaches with instream habitat reinstated	1

* and ^ denotes action which covers multiple MUs counted as one target in the overall targets.



This section includes the Diamond and Arthurs creeks. Both creeks rise in the Kinglake National Park and flow through rural landscapes for most of their length. Total Kms: 46

Sub-management unit	No.	Sub-management unit	No.
Arthurs/Running Creek Upper Forested	2	Diamond Creek Upper Forested	6

Program for the Diamond Creek (Source) Management Unit General

Program	Action	Lead responsibility	Partners	Costs (MW only)
Aquatic Habitat	Address downstream fish barriers	Melbourne Water		Guiding
Investigations	Undertake stream health investigations to fill the data gaps	Melbourne Water		\$40,000
Riparian Management	In partnership with government agencies, local land managers and community groups undertake riparian management with reference to local waterway plans where they exist	Melbourne Water	Agencies, Community	\$484,000

Program for the Diamond Creek (Source) Management Unit Specific to Sub-Management Unit

Sub-Mgt Unit	Program	Action	Lead responsibility	Partners	Costs (MW only)
Arthurs/Running Creek Upper Forested	Aquatic Habitat	Investigate opportunities to reintroduce large woody debris	Melbourne Water		\$70,000
		Investigate opportunities to improve habitat for Platypus	Melbourne Water		Guiding
Diamond Creek Upper Forested	Riparian Management	Target riparian zone management to areas of remnant vegetation and/or creation of habitat links	Melbourne Water		Guiding

Appendix 6 – Catchment Specific Actions by Management Unit 2008/09 to 2012/13

Yarra Catchment

Management Unit

Gardiners Creek

Number

12

Targets for Management Unit					
	Water quality	Aquatic life	Habitat & stability	Vegetation	Flow
Excellent					
Good			●		
Moderate	●				
Poor	●	●			
Very poor				●	●

Importance	High
-------------------	------

	Current	Target
Condition	Very Poor	Poor
Social Value	Very High	Very High

Five Year Implementation Target Area	Target
No. rivers with negotiated environmental flow regimes	-
No. rivers with improvements made to environmental flow regimes	-
Area of streamside land under mgmnt agreement km ²	0.34
Kilometres of streamside land revegetated	20.4
Number of fish barriers removed	-
Number of sites subject to bed and bank stabilisation	1
Kilometres of riparian land subject to weed mgmnt	44.6
No. of plans developed for Rivers and Creeks of high social value	-
Rivers where heritage values protected or improved	1
No. of plans developed for rivers and creeks of high environmental value	-
No. of investigations to fill data gaps	-
No. IRC reaches with instream habitat reinstated	-

* and ^ denotes action which covers multiple MUs counted as one target in the overall targets.



Gardiners Creek, including Scotchmans and Damper creeks, has a predominantly urban catchment. Total Kms: 51

Sub-management unit	No.
Gardiners Creek	44

Program for the Gardiners Creek Management Unit Specific to Sub-Management Unit

Sub-Mgt Unit	Program	Action	Lead responsibility	Partners	Costs (MW only)
Gardiners Creek	Aquatic Habitat	Create opportunities to improve habitat for water rat	Melbourne Water		Guiding
	Channel Form	Identify extent of localised bank erosion and implement appropriate management solutions	Melbourne Water		\$1,083,000
	Riparian Management	In partnership with government agencies, local land managers and community groups undertake riparian management with reference to local waterway plans where they exist	Melbourne Water	Agencies, Community	\$2,555,000

Management Unit
Koonung Creek

Number
39

Targets for Management Unit					
	Water quality	Aquatic life	Habitat & stability	Vegetation	Flow
Excellent					
Good			●		
Moderate					
Poor				●	
Very poor	●	●			●

Importance	Low
-------------------	-----

	Current	Target
Condition	Very Poor	Very Poor
Social Value	Moderate	Moderate

Five Year Implementation Target Area	Target
No. rivers with negotiated environmental flow regimes	-
No. rivers with improvements made to environmental flow regimes	-
Area of streamside land under mgmnt agreement km ²	0.01
Kilometres of streamside land revegetated	1.2
Number of fish barriers removed	-
Number of sites subject to bed and bank stabilisation	-
Kilometres of riparian land subject to weed mgmnt	2.2
No. of plans developed for Rivers and Creeks of high social value	-
Rivers where heritage values protected or improved	-
No. of plans developed for rivers and creeks of high environmental value	-
No. of investigations to fill data gaps	-
No. IRC reaches with instream habitat reinstated	-

* and ^ denotes action which covers multiple MUs counted as one target in the overall targets.



Koonung Creek is a small tributary of the Yarra that arises in Blackburn North and Doncaster. Total Kms: 15

Sub-management unit	No.
Koonung Creek	50

Program for the Koonung Creek Management Unit Specific to Sub-Management Unit

Sub-Mgt Unit	Program	Action	Lead responsibility	Partners	Costs (MW only)
Koonung Creek	Aquatic Habitat	Address downstream fish barriers	Melbourne Water		Guiding
	Riparian Management	In partnership with government agencies, local land managers and community groups undertake riparian management to gradually improve conditions and facilitate future rehabilitation with reference to local waterway plans where they exist	Melbourne Water	Agencies, Community	\$78,000

Appendix 6 – Catchment Specific Actions by Management Unit 2008/09 to 2012/13

Yarra Catchment

Management Unit
Little Yarra And Hoddles Creek **Number**
18

Targets for Management Unit					
	Water quality	Aquatic life	Habitat & stability	Vegetation	Flow
Excellent	●	●	●	●	●
Good	●	●	●	●	●
Moderate				●	
Poor					
Very poor					

Importance Very High

	Current	Target
Condition	Good	Excellent
Social Value	Moderate	Moderate

Five Year Implementation Target Area	Target
No. rivers with negotiated environmental flow regimes	1
No. rivers with improvements made to environmental flow regimes	2
Area of streamside land under mgmnt agreement km ²	0.20
Kilometres of streamside land revegetated	22.9
Number of fish barriers removed	1
Number of sites subject to bed and bank stabilisation	-
Kilometres of riparian land subject to weed mgmnt	41.6
No. of plans developed for Rivers and Creeks of high social value	-
Rivers where heritage values protected or improved	1
No. of plans developed for rivers and creeks of high environmental value	1
No. of investigations to fill data gaps	-
No. IRC reaches with instream habitat reinstated	2

* and ^ denotes action which covers multiple MUs counted as one target in the overall targets.



The Little Yarra River catchment contains the Little Yarra River and Hoddles Creek. Total Kms: 173

Sub-management unit	No.	Sub-management unit	No.
Hoddles Creek	47	Little Yarra	58
Little Yarra Upper Forested	8		

Program for the Little Yarra And Hoddles Creek Management Unit General

Program	Action	Lead responsibility	Partners	Costs (MW only)
Riparian Management	In partnership with government agencies, local land managers and community groups undertake riparian management with reference to local waterway plans where they exist	Melbourne Water	Agencies, Community	\$1,456,000
Riparian Management (not Little Yarra Upper Forested)	Target riparian zone management to areas of remnant vegetation and/or creation of habitat links	Melbourne Water		Guiding
Aquatic Habitat (not Hoddles Creek)	Ensure that large woody debris is maintained and investigate and carry out further reintroduction within the stream channel	Melbourne Water		\$70,000

Program for the Little Yarra And Hoddles Creek Management Unit Specific to Sub-Management Unit

Sub-Mgt Unit	Program	Action	Lead responsibility	Partners	Costs (MW only)
Hoddles Creek	Aquatic Habitat	Investigate and carry out the reintroduction of LWD recommended in the Hoddles Creek Streamflow Management Plan	Melbourne Water		\$70,000
		Investigate the extent of the fish barrier at the road culverts at Glenview Road and construct fish passage if required	Melbourne Water		\$20,000
	Flow Management	Review the Hoddles Creek Stream Flow Management Plan	Melbourne Water		\$150,000
	Plans	Develop the Hoddles Creek Waterway Plan	Melbourne Water	Agencies, Community	\$60,000
Little Yarra	Aquatic Habitat	Construct fishway over stream flow gauge on Little Yarra at Lowes Road	Melbourne Water		\$50,000
		Create opportunities to improve habitat for Platypus and Freshwater Crayfish	Melbourne Water		Guiding
		Investigate opportunities for improving native fish habitat	Melbourne Water		Guiding
	Flow Management	Implement Little Yarra and Don River Stream Flow Management Plan to manage water allocation between private water use and the environment	Melbourne Water	Agencies, Community	\$50,000

Management Unit

Merri Creek (Rural and Forested)

Number

35

Targets for Management Unit					
	Water quality	Aquatic life	Habitat & stability	Vegetation	Flow
Excellent					●
Good					
Moderate		●	●		
Poor	●			●	
Very poor					

Importance	Low
-------------------	-----

	Current	Target
Condition	Poor	Poor
Social Value	Low	Low

Five Year Implementation Target Area	Target
No. rivers with negotiated environmental flow regimes	-
No. rivers with improvements made to environmental flow regimes	-
Area of streamside land under mgmnt agreement km ²	0.04
Kilometres of streamside land revegetated	3.9
Number of fish barriers removed	-
Number of sites subject to bed and bank stabilisation	-
Kilometres of riparian land subject to weed mgmnt	7.1
No. of plans developed for Rivers and Creeks of high social value	-
Rivers where heritage values protected or improved	-
No. of plans developed for rivers and creeks of high environmental value	-
No. of investigations to fill data gaps	-
No. IRC reaches with instream habitat reinstated	-

* and ^ denotes action which covers multiple MUs counted as one target in the overall targets.



Merri Creek flows from the foothills of the Great Dividing Range north of Wallan on the Hume Highway. It is a major tributary of the Yarra River flowing over basalt plains to meet the Yarra at Fairfield. Total Kms: 157

Sub-management unit	No.
Merri Creek Upper	63

Program for the Merri Creek (Rural and Forested) Management Unit Specific to Sub-Management Unit

Sub-Mgt Unit	Program	Action	Lead responsibility	Partners	Costs (MW only)
Merri Creek Upper	Aquatic Habitat	Create opportunities to improve habitat for Growling Grass Frog	Melbourne Water		Guiding
	Riparian Management	In partnership with government agencies, local land managers and community groups undertake riparian management to gradually improve conditions and facilitate future rehabilitation with reference to local waterway plans where they exist	Melbourne Water	Agencies, Community	\$250,000

Appendix 6 – Catchment Specific Actions by Management Unit 2008/09 to 2012/13

Yarra Catchment

Management Unit Merri Creek (Urban)

Number
21

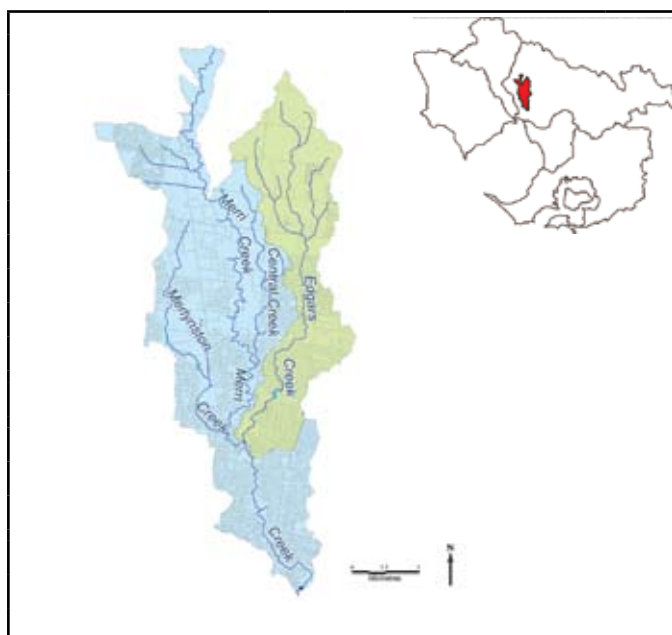
Targets for Management Unit					
	Water quality	Aquatic life	Habitat & stability	Vegetation	Flow
Excellent					
Good			●		
Moderate			●		
Poor	●	●		●	●
Very poor	●			●	

Importance High

	Current	Target
Condition	Very Poor	Poor
Social Value	Very High	Very High

Five Year Implementation Target Area	Target
No. rivers with negotiated environmental flow regimes	-
No. rivers with improvements made to environmental flow regimes	-
Area of streamside land under mgmnt agreement km ²	0.34
Kilometres of streamside land revegetated	39.7
Number of fish barriers removed	-
Number of sites subject to bed and bank stabilisation	1
Kilometres of riparian land subject to weed mgmnt	72.1
No. of plans developed for Rivers and Creeks of high social value	-
Rivers where heritage values protected or improved	1
No. of plans developed for rivers and creeks of high environmental value	-
No. of investigations to fill data gaps	1
No. IRC reaches with instream habitat reinstated	-

* and ^ denotes action which covers multiple MUs counted as one target in the overall targets.



Merri Creek flows from the foothills of the Great Dividing Range north of Wallan on the Hume Highway. Total Kms: 114

Sub-management unit	No.	Sub-management unit	No.
Edgars Creek	41	Merri Creek Lower	62

Program for the Merri Creek (Urban) Management Unit Specific to Sub-Management Unit

Sub-Mgt Unit	Program	Action	Lead responsibility	Partners	Costs (MW only)
Edgars Creek	Investigations	Undertake stream health investigations to fill the data gaps	Melbourne Water		\$40,000
	Riparian Management	In partnership with government agencies, local land managers and community groups undertake riparian management to gradually improve conditions and facilitate future rehabilitation with reference to local waterway plans where they exist	Melbourne Water	Agencies, Community	\$26,000
Merri Creek Lower	Aquatic Habitat	Create opportunities to improve habitat for the Growling Grass Frog	Melbourne Water		Guiding
		Investigate opportunities to improve native fish habitat	Melbourne Water		Guiding
	Channel Form	Implement actions to address bed erosion as proposed in the Merri Creek Waterway Management Activity Plan (in prep)	Melbourne Water		\$830,000
	Riparian Management	In partnership with government agencies, local land managers and community groups undertake riparian management with reference to local waterway plans where they exist	Melbourne Water	Agencies, Community	\$2,500,000

Management Unit
Middle And Lower Yarra

Number
62

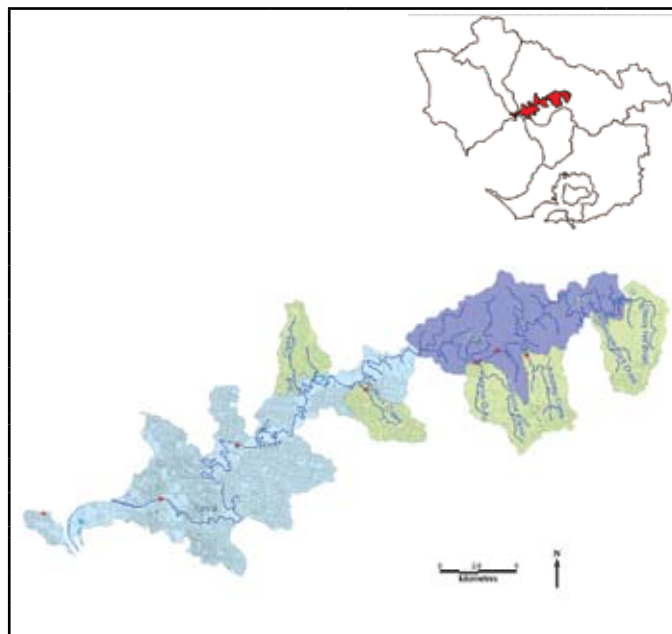
Targets for Management Unit					
	Water quality	Aquatic life	Habitat & stability	Vegetation	Flow
Excellent					
Good	●		●	●	
Moderate	●	●		●	
Poor				●	●
Very poor					

Importance	Very High
-------------------	-----------

	Current	Target
Condition	Moderate	Moderate
Social Value	Very High	Very High

Five Year Implementation Target Area	Target
No. rivers with negotiated environmental flow regimes	-
No. rivers with improvements made to environmental flow regimes	-
Area of streamside land under mgmnt agreement km ²	0.86
Kilometres of streamside land revegetated	78.0
Number of fish barriers removed	1
Number of sites subject to bed and bank stabilisation	-
Kilometres of riparian land subject to weed mgmnt	183.2
No. of plans developed for Rivers and Creeks of high social value	1 [^]
Rivers where heritage values protected or improved	2
No. of plans developed for rivers and creeks of high environmental value	1 [^]
No. of investigations to fill data gaps	3
No. IRC reaches with instream habitat reinstated	-

* and ^ denotes action which covers multiple MUs counted as one target in the overall targets.



The middle and lower Yarra River catchment represents the section of the Yarra below Warrandyte, including minor tributaries such as Anderson, Jumping, Ruffeys, Salt and Banyule creeks. Total Kms: 195

Sub-management unit	No.	Sub-management unit	No.
Andersons Creek	20	Jumping Creek	48
Ruffeys/Salt/Banyule	79	Yarra River (Warrandyte)	98
Yarra River Lower	96	Chirside Park (no actions)	30

Program for the Middle And Lower Yarra Management Unit General

Program	Action	Lead responsibility	Partners	Costs (MW only)
Riparian Management (not Jumping Creek)	In partnership with government agencies, local land managers and community groups undertake riparian management with reference to local waterway plans where they exist	Melbourne Water	Agencies, Community	\$6,165,000

Program for the Middle And Lower Yarra Management Unit Specific to Sub-Management Unit

Sub-Mgt Unit	Program	Action	Lead responsibility	Partners	Costs (MW only)
Andersons Creek	Investigations	Undertake stream health investigations to fill the data gaps	Melbourne Water		\$40,000
Jumping Creek	Aquatic Habitat	Address downstream fish barriers	Melbourne Water		Guiding
	Riparian Management	Investigate opportunities to improve the riparian habitat of swamp wallabies	Melbourne Water		Guiding
		Target riparian zone management to areas of remnant vegetation and/or creation of habitat links	Melbourne Water		\$101,000
Ruffeys/Salt/Banyule	Aquatic Habitat	Address downstream fish barriers	Melbourne Water		Guiding
Yarra River (Warrandyte)	Aquatic Habitat	Create opportunities to improve habitat for Platypus and Murray Cod	Melbourne Water		\$50,000
		Investigate opportunities for improving native fish habitat	Melbourne Water		\$100,000
	Flow Management	Develop, implement and monitor annual watering plans to utilise environmental entitlements.	Melbourne Water	Sustainability & Environment	\$11,000
	Investigations	Undertake water quality, fish and platypus investigation	Melbourne Water		\$60,000
	Plans	Develop the Middle Yarra Waterway Plan	Melbourne Water	Agencies, Parks Victoria, Community	\$150,000
	Riparian Management	Target riparian zone management to areas of remnant vegetation and/or creation of habitat links	Melbourne Water		\$150,000

Appendix 6 – Catchment Specific Actions by Management Unit 2008/09 to 2012/13

Yarra Catchment

Program for the Middle And Lower Yarra Management Unit Specific to Sub-Management Unit

Sub-Mgt Unit	Program	Action	Lead responsibility	Partners	Costs (MW only)
Yarra River Lower	Aquatic Habitat	Create opportunities to improve habitat for Platypus and Water Rat	Melbourne Water		Guiding
		Implement Dights Falls fishway modifications proposed to improve overall effectiveness	Melbourne Water	Parks Victoria	\$100,000
		Investigate opportunities for improving native fish habitat.	Melbourne Water		\$120,000
	Flow Management	Develop, implement and monitor annual watering plans to utilise environmental entitlements.	Melbourne Water	Sustainability & Environment	\$11,000
	Investigations	Undertake a fish investigation	Melbourne Water		\$50,000
	Plans	Develop Mid Yarra Waterway Plan	Melbourne Water	Agencies, Community	\$150,000

Management Unit
Moonee Ponds

Number
26

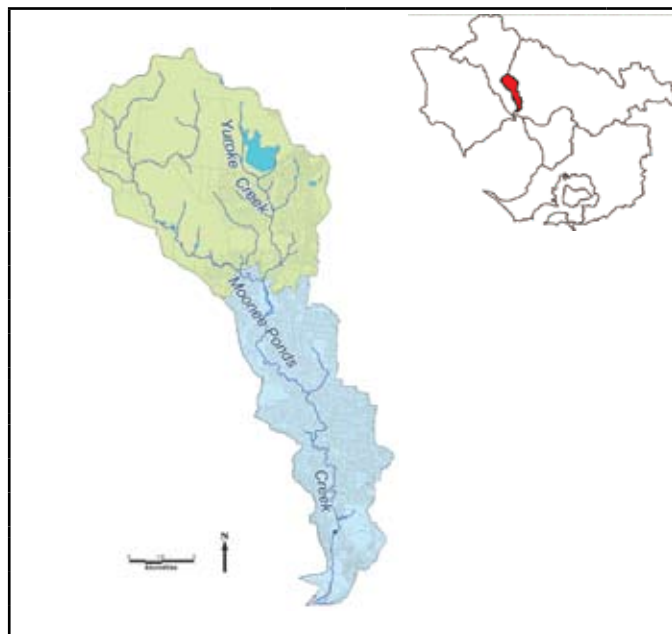
Targets for Management Unit					
	Water quality	Aquatic life	Habitat & stability	Vegetation	Flow
Excellent					
Good			●		
Moderate	●				
Poor	●	●		●	●
Very poor				●	

Importance Moderate

	Current	Target
Condition	Very Poor	Poor
Social Value	High	High

Five Year Implementation Target Area	Target
No. rivers with negotiated environmental flow regimes	-
No. rivers with improvements made to environmental flow regimes	-
Area of streamside land under mgmnt agreement km ²	0.30
Kilometres of streamside land revegetated	34.9
Number of fish barriers removed	-
Number of sites subject to bed and bank stabilisation	1
Kilometres of riparian land subject to weed mgmnt	63.4
No. of plans developed for Rivers and Creeks of high social value	-
Rivers where heritage values protected or improved	1
No. of plans developed for rivers and creeks of high environmental value	-
No. of investigations to fill data gaps	-
No. IRC reaches with instream habitat reinstated	-

* and ^ denotes action which covers multiple MUs counted as one target in the overall targets.



Moonee Ponds Creek flows from Greenvale down through Tullamarine and joins the Yarra River in West Melbourne. Total Kms: 93

Sub-management unit	No.	Sub-management unit	No.
Moonee Ponds Lower	69	Moonee Ponds Upper	70

Program for the Moonee Ponds Management Unit Specific to Sub-Management Unit

Sub-Mgt Unit	Program	Action	Lead responsibility	Partners	Costs (MW only)
Moonee Ponds Lower	Channel Form	Undertake Channel form works in accordance with recommendations of Moonee Ponds, Atwood and Yuroke Creeks Waterway Management Activity Plan	Melbourne Water		\$868,000
	Riparian Management	In partnership with government agencies, local land managers and community groups undertake riparian management with reference to local waterway plans where they exist	Melbourne Water	Agencies, Community	\$1,111,000
Moonee Ponds Upper	Riparian Management	In partnership with government agencies, local land managers and community groups undertake riparian management with reference to local waterway plans where they exist	Melbourne Water	Agencies, Community	\$1,111,000
		Investigate opportunities to protect River Red Gum communities	Melbourne Water	Local Govt	Guiding

Management Unit

Mullum Mullum

Number

44

Targets for Management Unit

	Water quality	Aquatic life	Habitat & stability	Vegetation	Flow
Excellent					
Good			●		
Moderate				●	
Poor	●	●			
Very poor					●

Importance High

	Current	Target
Condition	Poor	Poor
Social Value	Moderate	Moderate

Five Year Implementation Target Area

	Target
No. rivers with negotiated environmental flow regimes	-
No. rivers with improvements made to environmental flow regimes	-
Area of streamside land under mgmnt agreement km ²	0.35
Kilometres of streamside land revegetated	12.0
Number of fish barriers removed	-
Number of sites subject to bed and bank stabilisation	1
Kilometres of riparian land subject to weed mgmnt	26.2
No. of plans developed for Rivers and Creeks of high social value	-
Rivers where heritage values protected or improved	-
No. of plans developed for rivers and creeks of high environmental value	-
No. of investigations to fill data gaps	1
No. IRC reaches with instream habitat reinstated	-

* and ^ denotes action which covers multiple MUs counted as one target in the overall targets.



This is a small tributary of the Yarra River flowing from Ringwood and North Croydon through large areas of open space along its length, before meeting the Yarra in the Yarra Valley parklands at Templestowe. Total Kms: 30

Sub-management unit	No.
Mullum Mullum	72

Program for the Mullum Mullum Management Unit Specific to Sub-Management Unit

Sub-Mgt Unit	Program	Action	Lead responsibility	Partners	Costs (MW only)
Mullum Mullum	Aquatic Habitat	Address downstream fish barriers	Melbourne Water		Guiding
		Investigate and implement, where feasible habitat actions contained within the Waterway Activity Plan such as construction of rock riffles	Melbourne Water		Guiding
		Investigate opportunities for improving native fish habitat	Melbourne Water		Guiding
	Channel Form	Implement priority activities to address bed and bank erosion as identified in the Waterway Activity Plan	Melbourne Water		\$713,000
	Investigations	Undertake a fish investigation	Melbourne Water		\$20,000
	Riparian Management	In partnership with government agencies, local land managers and community groups undertake riparian management with reference to local waterway plans where they exist	Melbourne Water	Agencies, Community	\$2,625,000
	Target riparian zone management to areas of remnant vegetation and/or creation of habitat links	Melbourne Water		Guiding	

Management Unit
Olinda Creek

Number
45

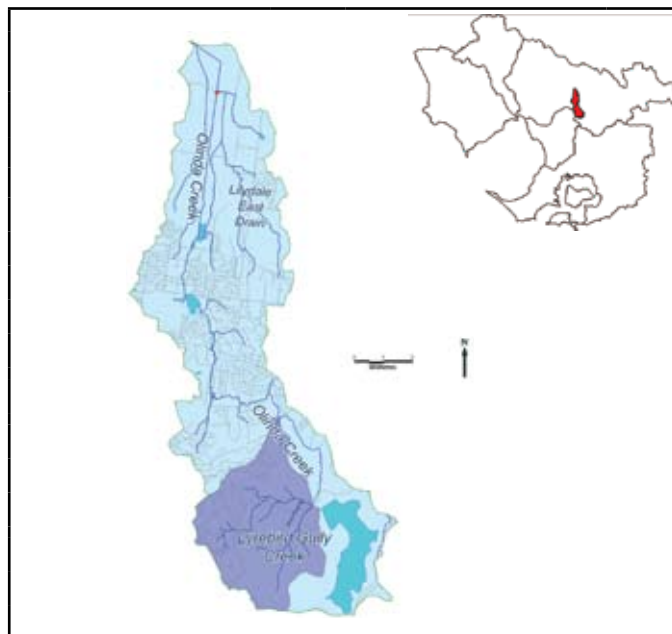
Targets for Management Unit					
	Water quality	Aquatic life	Habitat & stability	Vegetation	Flow
Excellent	●				●
Good	●	●	●		●
Moderate		●	●	●	●
Poor				●	
Very poor				●	

Importance	Very High
-------------------	-----------

	Current	Target
Condition	Moderate	Good
Social Value	Very High	Very High

Five Year Implementation Target Area	Target
No. rivers with negotiated environmental flow regimes	1
No. rivers with improvements made to environmental flow regimes	1
Area of streamside land under mgmnt agreement km ²	0.32
Kilometres of streamside land revegetated	31.2
Number of fish barriers removed	-
Number of sites subject to bed and bank stabilisation	1
Kilometres of riparian land subject to weed mgmnt	68.8
No. of plans developed for Rivers and Creeks of high social value	1
Rivers where heritage values protected or improved	1
No. of plans developed for rivers and creeks of high environmental value	-
No. of investigations to fill data gaps	-
No. IRC reaches with instream habitat reinstated	-

* and ^ denotes action which covers multiple MUs counted as one target in the overall targets.



Olinda Creek originates in the forested slopes of the Dandenong Ranges and its middle and lower sections traverse rural and urbanised landscapes. Total Kms: 78

Sub-management unit	No.	Sub-management unit	No.
Olinda Creek	73	Olinda Creek Upper Forested	10

Program for the Olinda Creek Management Unit Specific to Sub-Management Unit

Sub-Mgt Unit	Program	Action	Lead responsibility	Partners	Costs (MW only)
Olinda Creek	Aquatic Habitat	Create opportunities to improve Platypus habitat and protect Yarra Gum communities in Spandons Reserve	Melbourne Water	Local Govt	Guiding
		In consultation with stakeholders, manage fish stocking at Lilydale Lake in accordance with the Guidelines for Assessing Translocations of Live Aquatic Organisms in Victoria and associated Protocol for the Translocation of Fish in Victorian Inland Public Waters	Dept of Primary Industries	Local Govt, Melbourne Water	\$2,000
		Create opportunities to improve habitat for significant species	Melbourne Water		Guiding
	Channel Form	Continue to implement priority actions to address bed and bank erosion in the Olinda Creek Waterway Activity Plan	Melbourne Water		\$735,000
	Flow Management	Update environmental flow study and review Olinda Creek Stream Flow Management Plan to manage water allocation between private water use and the environment.	Melbourne Water	Agencies, Community	\$250,000
Olinda Creek Upper Forested	Riparian Management	In partnership with government agencies, local land managers and community groups undertake riparian management with reference to local waterway plans where they exist	Melbourne Water	Agencies, Community	\$2,408,000
	Aquatic Habitat	Create opportunities to improve habitat for significant species	Melbourne Water		Guiding
	Plans	Develop a weed management plan for the upper and middle reaches.	Melbourne Water		\$50,000

Appendix 6 – Catchment Specific Actions by Management Unit 2008/09 to 2012/13

Yarra Catchment

Management Unit
Plenty River (Rural and Lower) **Number**
49

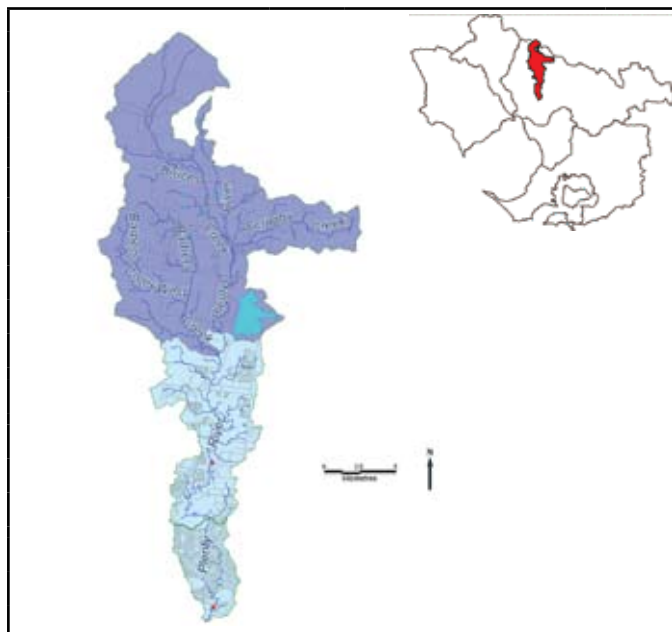
Targets for Management Unit					
	Water quality	Aquatic life	Habitat & stability	Vegetation	Flow
Excellent					
Good	●	●		●	
Moderate		●	●		
Poor	●			●	●
Very poor					●

Importance Very High

	Current	Target
Condition	Very Poor	Moderate
Social Value	High	High

Five Year Implementation Target Area	Target
No. rivers with negotiated environmental flow regimes	-
No. rivers with improvements made to environmental flow regimes	1*
Area of streamside land under mgmnt agreement km ²	0.43
Kilometres of streamside land revegetated	50.7
Number of fish barriers removed	-
Number of sites subject to bed and bank stabilisation	1
Kilometres of riparian land subject to weed mgmnt	92.3
No. of plans developed for Rivers and Creeks of high social value	-
Rivers where heritage values protected or improved	1
No. of plans developed for rivers and creeks of high environmental value	-
No. of investigations to fill data gaps	-
No. IRC reaches with instream habitat reinstated	-

* and ^ denotes action which covers multiple MUs counted as one target in the overall targets.



The Plenty River and its tributaries flow from the headwaters around Whittlesea to where it joins the Yarra near Viewbank. Major tributaries include Barbers, Bruces, Scrubby and Jacks creeks. Total Kms: 271

Sub-management unit	No.	Sub-management unit	No.
Plenty River Upper	78	Plenty Gorge	76
Plenty River Lower	77		

Program for the Plenty River (Rural and Lower) Management Unit General

Program	Action	Lead responsibility	Partners	Costs (MW only)
Aquatic Habitat (not Plenty River Lower)	Create opportunities to improve Platypus habitat	Melbourne Water		Guiding
Flow Management	Implement the Plenty River Stream Flow Management Plan and ensure that water allocation is managed in accordance with the Plan	Melbourne Water		\$51,000
Riparian Management	In partnership with government agencies, local land managers and community groups undertake riparian management with reference to local waterway plans where they exist	Melbourne Water	Agencies, Community	\$3,233,000
Riparian Management (not Plenty River Upper)	Target riparian zone management to areas of remnant vegetation and/or creation of habitat links	Melbourne Water		Guiding

Program for the Plenty River (Rural and Lower) Management Unit Specific to Sub-Management Unit

Sub-Mgt Unit	Program	Action	Lead responsibility	Partners	Costs (MW only)
Plenty River Upper	Aquatic Habitat	Create opportunities to improve Platypus habitat	Melbourne Water		Guiding
	Channel Form	Implement bed and bank restoration actions identified in the geomorphological studies of Barbers Creek and Bruces Creek	Melbourne Water		\$615,000
	Flow Management	Amend Yarra System Bulk Entitlement to include recommendations from the Plenty River reach in the Yarra environmental flows study	Melbourne Water	Sustainability & Environment	\$10,000
		Implement recommendations from investigation into the feasibility of releasing flushing flows from Toorourrong Reservoir during May- June	Melbourne Water		\$25,000
Plenty Gorge	Aquatic Habitat	Create opportunities to improve Platypus habitat	Melbourne Water		Guiding

Management Unit

Plenty River (Source)

Number

50

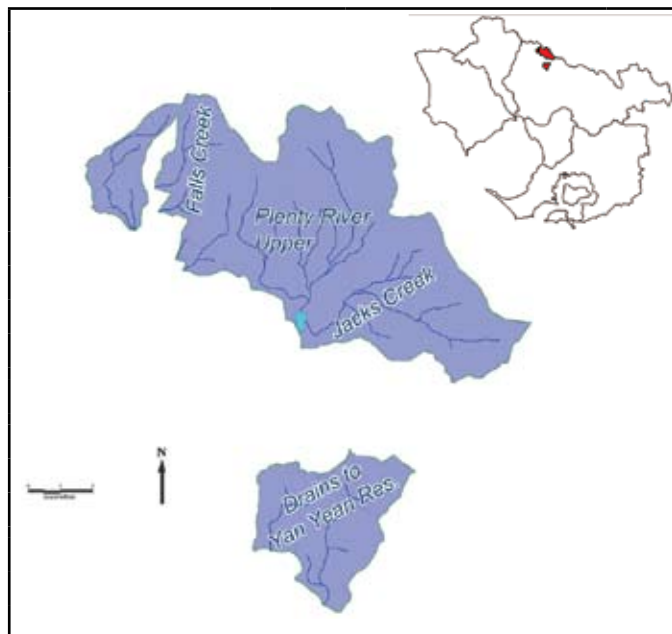
Targets for Management Unit					
	Water quality	Aquatic life	Habitat & stability	Vegetation	Flow
Excellent	●	●		●	
Good			●	●	●
Moderate					●
Poor					
Very poor					

Importance	Very High
-------------------	-----------

	Current	Target
Condition	Good	Good
Social Value	Low	Low

Five Year Implementation Target Area	Target
No. rivers with negotiated environmental flow regimes	-
No. rivers with improvements made to environmental flow regimes	1*
Area of streamside land under mgmnt agreement km ²	-
Kilometres of streamside land revegetated	-
Number of fish barriers removed	-
Number of sites subject to bed and bank stabilisation	-
Kilometres of riparian land subject to weed mgmnt	1.4
No. of plans developed for Rivers and Creeks of high social value	-
Rivers where heritage values protected or improved	-
No. of plans developed for rivers and creeks of high environmental value	-
No. of investigations to fill data gaps	-
No. IRC reaches with instream habitat reinstated	-

* and ^ denotes action which covers multiple MUs counted as one target in the overall targets.



The Plenty River and its tributaries flow from the headwaters around Whittlesea to where it joins the Yarra near Viewbank. Major tributaries include Barbers, Bruces, Scrubby and Jacks creeks. Total Kms: 68

Sub-management unit	No.
Plenty River Upper Forested	13

Program for the Plenty River (Source) Management Unit Specific to Sub-Management Unit

Sub-Mgt Unit	Program	Action	Lead responsibility	Partners	Costs (MW only)
Plenty River Upper Forested	Aquatic Habitat	Create opportunities to improve Platypus habitat associated with Toorourrong Reservoir	Melbourne Water		Guiding
	Flow Management	Ammend Yarra System Bulk Entitlement to include recommendations from the Plenty River reach in the Yarra environmental flows study.	Melbourne Water	Sustainability & Environment	\$10,000
		Implement recommendations from investigation into the feasibility of releasing flushing flows from Toorourrong Reservoir during May-June	Melbourne Water		\$25,000
	Riparian Management	In partnership with government agencies, local land managers and community groups undertake riparian management to gradually improve conditions and facilitate future rehabilitation with reference to local waterway plans where they exist	Melbourne Water	Agencies, Community	\$50,000
		Target riparian zone management to areas of remnant vegetation and/or creation of habitat links	Melbourne Water		Guiding

Appendix 6 – Catchment Specific Actions by Management Unit 2008/09 to 2012/13

Yarra Catchment

Management Unit
Steels and Pauls Creek (rural) **Number**
53

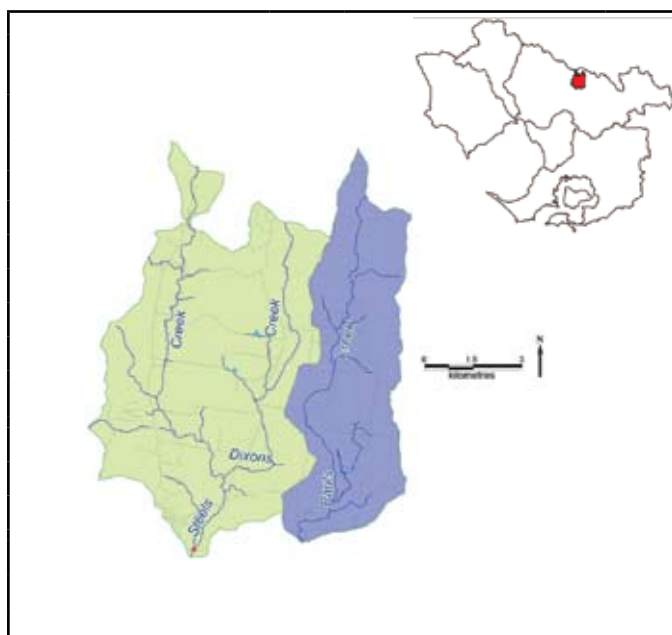
Targets for Management Unit					
	Water quality	Aquatic life	Habitat & stability	Vegetation	Flow
Excellent			●		●
Good		●	●		
Moderate	●	●		●	
Poor				●	
Very poor					

Importance

	Current	Target
Condition	Poor	Moderate
Social Value	Low	Low

Five Year Implementation Target Area	Target
No. rivers with negotiated environmental flow regimes	1
No. rivers with improvements made to environmental flow regimes	1
Area of streamside land under mgmnt agreement km ²	0.08
Kilometres of streamside land revegetated	9.0
Number of fish barriers removed	-
Number of sites subject to bed and bank stabilisation	2
Kilometres of riparian land subject to weed mgmnt	16.4
No. of plans developed for Rivers and Creeks of high social value	-
Rivers where heritage values protected or improved	-
No. of plans developed for rivers and creeks of high environmental value	-
No. of investigations to fill data gaps	-
No. IRC reaches with instream habitat reinstated	-

* and ^ denotes action which covers multiple MUs counted as one target in the overall targets.



Steels and Pauls creeks enter the Yarra River from the north, near Yarra Glen.
 Total Kms: 77

Sub-management unit	No.	Sub-management unit	No.
Pauls Creek	75	Steels Creek	81

Program for the Steels and Pauls Creek (rural) Management Unit General

Program	Action	Lead responsibility	Partners	Costs (MW only)
Flow Management	Update environmental flow study and re-view Steels, Pauls and Dixons Creeks Stream Flow Management Plan to manage water allocation between private water use and the environment	Melbourne Water	Agencies, Community	\$500,000
Riparian Management	In partnership with government agencies, local land managers and community groups undertake riparian management with reference to local waterway plans where they exist	Melbourne Water	Agencies, Community	\$575,000

Program for the Steels and Pauls Creek (rural) Management Unit Specific to Sub-Management Unit

Sub-Mgt Unit	Program	Action	Lead responsibility	Partners	Costs (MW only)
Pauls Creek	Channel Form	Investigate the extent of bed and bank erosion and implement appropriate management solutions	Melbourne Water		\$213,000
Steels Creek	Channel Form	Continue to implement erosion control strategies to address bed and bank erosion as outlined in the geomorphologic study for this sub management unit	Melbourne Water		\$275,000

Management Unit

Steels and Pauls Creek (source)

Number

54

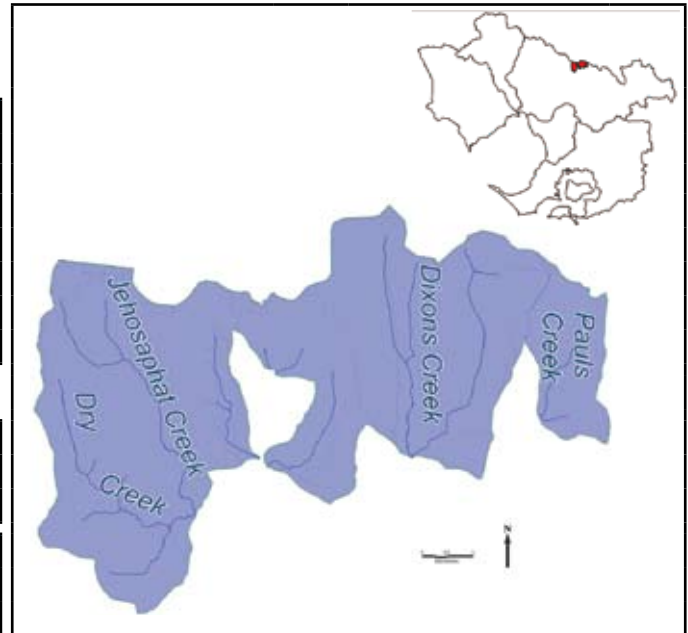
Targets for Management Unit					
	Water quality	Aquatic life	Habitat & stability	Vegetation	Flow
Excellent	●				
Good			●		●
Moderate		●		●	
Poor					
Very poor					

Importance	Very High
-------------------	-----------

	Current	Target
Condition	Good	Good
Social Value	Low	Low

Five Year Implementation Target Area	Target
No. rivers with negotiated environmental flow regimes	-
No. rivers with improvements made to environmental flow regimes	-
Area of streamside land under mgmnt agreement km ²	-
Kilometres of streamside land revegetated	-
Number of fish barriers removed	-
Number of sites subject to bed and bank stabilisation	-
Kilometres of riparian land subject to weed mgmnt	7.5
No. of plans developed for Rivers and Creeks of high social value	-
Rivers where heritage values protected or improved	-
No. of plans developed for rivers and creeks of high environmental value	-
No. of investigations to fill data gaps	-
No. IRC reaches with instream habitat reinstated	-

* and ^ denotes action which covers multiple MUs counted as one target in the overall targets.



Steels and Pauls creeks enter the Yarra River from the north, near Yarra Glen. Total Kms: 39

Sub-management unit	No.	Sub-management unit	No.
Pauls Creek Upper Forested	11	Steels Creek Upper Forested	14

Program for the Steels and Pauls Creek (source) Management Unit General

Program	Action	Lead responsibility	Partners	Costs (MW only)
Aquatic Habitat	Address downstream fish barriers	Melbourne Water		Guiding
Riparian Management	In partnership with government agencies, local land managers and community groups undertake riparian management with reference to local waterway plans where they exist	Melbourne Water	Agencies, Community	\$263,000

Appendix 6 – Catchment Specific Actions by Management Unit 2008/09 to 2012/13

Yarra Catchment

Management Unit Stringybark Creek

Number
56

Targets for Management Unit					
	Water quality	Aquatic life	Habitat & stability	Vegetation	Flow
Excellent					●
Good		●			
Moderate	●		●		
Poor					
Very poor				●	

Importance	Low
-------------------	-----

	Current	Target
Condition	Poor	Poor
Social Value	Moderate	Moderate

Five Year Implementation Target Area	Target
No. rivers with negotiated environmental flow regimes	1
No. rivers with improvements made to environmental flow regimes	1
Area of streamside land under mgmnt agreement km ²	0.04
Kilometres of streamside land revegetated	3.9
Number of fish barriers removed	-
Number of sites subject to bed and bank stabilisation	-
Kilometres of riparian land subject to weed mgmnt	7.1
No. of plans developed for Rivers and Creeks of high social value	-
Rivers where heritage values protected or improved	1
No. of plans developed for rivers and creeks of high environmental value	-
No. of investigations to fill data gaps	-
No. IRC reaches with instream habitat reinstated	-

* and ^ denotes action which covers multiple MUs counted as one target in the overall targets.



Stringybark Creek originates at Mount Evelyn and is surrounded by semi-rural and rural landscapes. Total Kms: 76

Sub-management unit	No.
Stringybark Creek	83

Program for the Stringybark Creek Management Unit Specific to Sub-Management Unit

Sub-Mgt Unit	Program	Action	Lead responsibility	Partners	Costs (MW only)
Stringybark Creek	Flow Management	Update environmental flow study and review Stringybark Creek Stream Flow Management Plan to manage water allocation between private water use and the environment.	Melbourne Water	Agencies, Community	\$250,000
	Riparian Management	Investigate opportunities to protect Yarra Gum in riparian areas	Melbourne Water		\$125,000
		In partnership with government agencies, local land managers and community groups undertake riparian management to gradually improve conditions and facilitate future rehabilitation with reference to local waterway plans where they exist	Melbourne Water	Agencies, Community	\$125,000

Management Unit
Upper Yarra (Rural)

Number
37

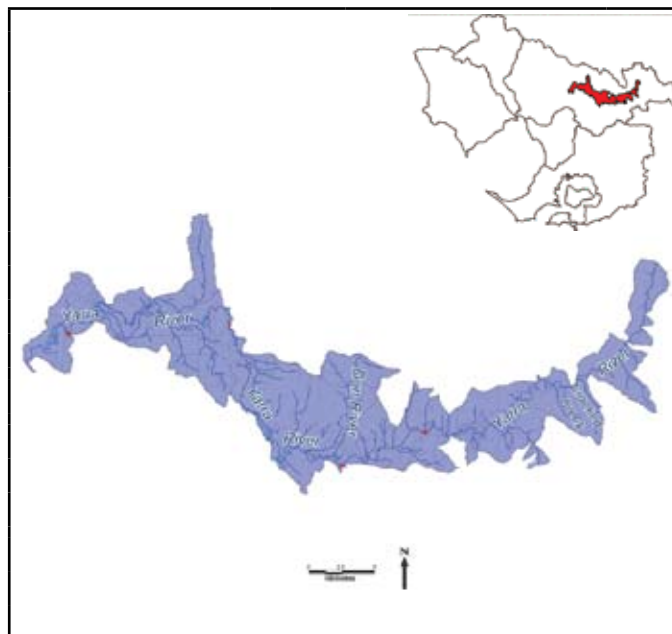
Targets for Management Unit					
	Water quality	Aquatic life	Habitat & stability	Vegetation	Flow
Excellent	●	●	●		
Good	●	●	●		●
Moderate				●	
Poor				●	
Very poor					

Importance	Very High
-------------------	-----------

	Current	Target
Condition	Moderate	Good
Social Value	High	High

Five Year Implementation Target Area	Target
No. rivers with negotiated environmental flow regimes	1
No. rivers with improvements made to environmental flow regimes	1
Area of streamside land under mgmnt agreement km ²	0.36
Kilometres of streamside land revegetated	41.6
Number of fish barriers removed	1
Number of sites subject to bed and bank stabilisation	-
Kilometres of riparian land subject to weed mgmnt	75.7
No. of plans developed for Rivers and Creeks of high social value	1 [^]
Rivers where heritage values protected or improved	5
No. of plans developed for rivers and creeks of high environmental value	1 [^]
No. of investigations to fill data gaps	3
No. IRC reaches with instream habitat reinstated	1

* and ^ denotes action which covers multiple MUs counted as one target in the overall targets.



The Upper Yarra River contains the section of Yarra River upstream of Warrandyte, including major tributaries such as the Don River. Total Kms: 318

Sub-management unit	No.	Sub-management unit	No.
Yarra River (Healesville)	95	Yarra River (Healsville) Upper Forested	18
Yarra River (Upper Tribs)	176		
Yarra River (Yering)	99	Yarra River Upper	97

Program for the Upper Yarra (Rural) Management Unit General

Program	Action	Lead responsibility	Partners	Costs (MW only)
Flow Management (not Healsville Upper Forested or Upper Tribs)	Develop, implement and monitor annual watering plans to utilise environmental entitlements	Melbourne Water	Sustainability & Environment	\$33,000
Riparian Management (not Healsville Upper Forested)	In partnership with government agencies, local land managers and community groups undertake riparian management with reference to local waterway plans where they exist	Melbourne Water	Agencies, Community	\$2,651,000

Program for the Upper Yarra (Rural) Management Unit Specific to Sub-Management Unit

Sub-Mgt Unit	Program	Action	Lead responsibility	Partners	Costs (MW only)
Yarra River (Healesville)	Aquatic Habitat	Address downstream fish barriers	Melbourne Water		Guiding
		Create opportunities to improve habitat for Platypus and Freshwater Crayfish	Melbourne Water		Guiding
		Create opportunities to improve River blackfish populations and improve fish habitat through reducing channel contraction by providing appropriate environmental flows through the Bulk Entitlement process	Melbourne Water		Guiding
		Investigate opportunities for improving native fish habitat	Melbourne Water		Guiding
	Investigations	Undertake water quality and fish investigation	Melbourne Water		\$40,000
	Plans	In partnership with government agencies, local land managers and community groups undertake riparian management with reference to local waterway plans where they exist	Melbourne Water	Agencies, Community	\$40,000
Yarra River (Healsville) Upper Forested	Aquatic Habitat	Address downstream barriers	Melbourne Water		Guiding

Appendix 6 – Catchment Specific Actions by Management Unit 2008/09 to 2012/13 Yarra Catchment

Program for the Upper Yarra (Rural) Management Unit Specific to Sub-Management Unit

Sub-Mgt Unit	Program	Action	Lead responsibility	Partners	Costs (MW only)
Yarra River (Yering)	Aquatic Habitat	Address downstream fish barriers	Melbourne Water		Guiding
		Create opportunities to improve habitat for the Growling grass frog	Melbourne Water		Guiding
		Create opportunities to improve River blackfish populations and improve fish habitat through reducing channel contraction by providing appropriate environmental flows through the Bulk Entitlement process	Melbourne Water		Guiding
		Investigate opportunities to improve habitat for significant fish species including reintroduction of large woody debris and pool riffles zones	Melbourne Water		\$100,000
	Flow Management	Consider sub management unit in “Natural floodplains and wetlands strategy” address issues such as the impact of levees and floodplain drainage	Melbourne Water		Guiding
	Investigations	Undertake water quality, fish and platypus investigation	Melbourne Water		\$60,000
	Plans	Develop the Waterway Plan for Yarra River (Yering)	Melbourne Water	Agencies, Community	\$40,000
Yarra River (Healsville) Upper Forested	Aquatic Habitat	Create opportunities to improve River blackfish populations and improve fish habitat through reducing channel contraction by providing appropriate environmental flows through the Bulk Entitlement process	Melbourne Water		Guiding
		Investigate opportunities and undertake works to remove fish barriers	Melbourne Water		\$250,000
		Investigate opportunities to improve habitat for native fish, platypus and freshwater crayfish	Melbourne Water		Guiding
	Investigations	Undertake platypus investigation	Melbourne Water		\$20,000
	Plans	Develop the Upper Yarra Reserves Vegetation Management Plan	Melbourne Water	Agencies, Community	\$90,000
	Riparian Management	Target riparian zone management to areas of remnant vegetation and/or creation of habitat links	Melbourne Water		Guiding

Management Unit

Upper Yarra (Source)

Number

38

Targets for Management Unit					
	Water quality	Aquatic life	Habitat & stability	Vegetation	Flow
Excellent	●	●	●	●	●
Good					
Moderate					
Poor					
Very poor					

Importance	Very High
-------------------	-----------

	Current	Target
Condition	Excellent	Excellent
Social Value	Moderate	Moderate

Five Year Implementation Target Area	Target
No. rivers with negotiated environmental flow regimes	-
No. rivers with improvements made to environmental flow regimes	-
Area of streamside land under mgmnt agreement km ²	-
Kilometres of streamside land revegetated	-
Number of fish barriers removed	-
Number of sites subject to bed and bank stabilisation	-
Kilometres of riparian land subject to weed mgmnt	33.0
No. of plans developed for Rivers and Creeks of high social value	-
Rivers where heritage values protected or improved	-
No. of plans developed for rivers and creeks of high environmental value	-
No. of investigations to fill data gaps	1
No. IRC reaches with instream habitat reinstated	-

* and ^ denotes action which covers multiple MUs counted as one target in the overall targets.



The Upper Yarra River contains the section of Yarra River upstream of Warrandyte, including major tributaries such as the Don River. Total Kms: 587

Sub-management unit	No.
Yarra River Upper Forested	19

Program for the Upper Yarra (Source) Management Unit Specific to Sub-Management Unit

Sub-Mgt Unit	Program	Action	Lead responsibility	Partners	Costs (MW only)
Yarra River Upper Forested	Investigations	Undertake platypus investigation	Melbourne Water		\$20,000
	Riparian Management	Develop weed management plan for interface with water supply catchment	Melbourne Water	Dept of Sustainability & Environment	\$31,000
		Implement weed management plan for interface with water supply catchment	Melbourne Water		\$1,125,000

Appendix 6 – Catchment Specific Actions by Management Unit 2008/09 to 2012/13

Yarra Catchment

Management Unit

Watsons Creek

Number

58

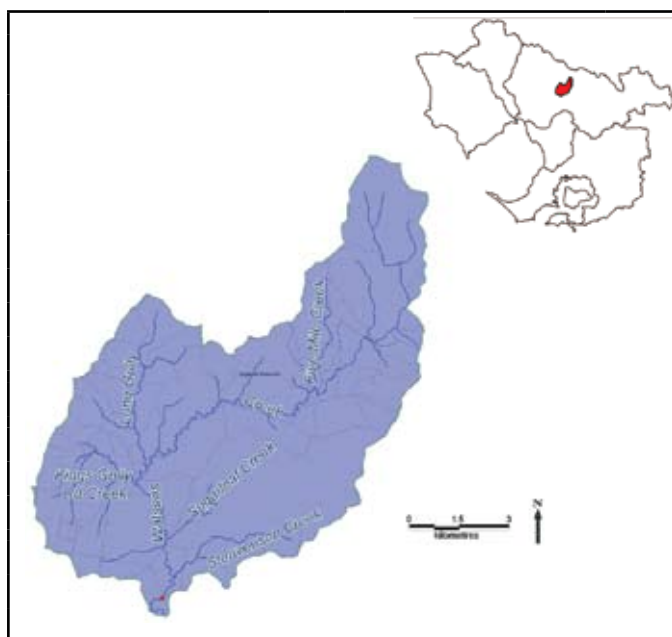
Targets for Management Unit					
	Water quality	Aquatic life	Habitat & stability	Vegetation	Flow
Excellent	●	●	●	●	●
Good	●	●		●	
Moderate				●	
Poor					
Very poor					

Importance	Very High
-------------------	-----------

	Current	Target
Condition	Good	Excellent
Social Value	Low	Low

Five Year Implementation Target Area	Target
No. rivers with negotiated environmental flow regimes	-
No. rivers with improvements made to environmental flow regimes	-
Area of streamside land under mgmnt agreement km ²	0.09
Kilometres of streamside land revegetated	10.2
Number of fish barriers removed	-
Number of sites subject to bed and bank stabilisation	-
Kilometres of riparian land subject to weed mgmnt	18.6
No. of plans developed for Rivers and Creeks of high social value	-
Rivers where heritage values protected or improved	-
No. of plans developed for rivers and creeks of high environmental value	1
No. of investigations to fill data gaps	2
No. IRC reaches with instream habitat reinstated	-

* and ^ denotes action which covers multiple MUs counted as one target in the overall targets.



Watsons Creek enters the Yarra River from the north near Wonga Park. The creek originates in the forested Kinglake National Park and quickly passes into cleared land at Christmas Hills and Kangaroo Ground. Total Kms: 73

Sub-management unit	No.	Sub-management unit	No.
Watsons Creek	89	Watsons Creek Upper Forested	16

Program for the Watsons Creek Management Unit General

Program	Action	Lead responsibility	Partners	Costs (MW only)
Investigations	Undertake macroinvertebrate investigation	Melbourne Water		\$20,000
Riparian Management	In partnership with government agencies, local land managers and community groups undertake riparian management with reference to local waterway plans where they exist	Melbourne Water	Agencies, Community	\$432,000

Program for the Watsons Creek Management Unit Specific to Sub-Management Unit

Sub-Mgt Unit	Program	Action	Lead responsibility	Partners	Costs (MW only)
Watsons Creek	Plans	Develop Watsons Creek Waterway Plan	Melbourne Water		\$50,000
Watsons Creek Upper Forested	Aquatic Habitat	Address downstream barriers	Melbourne Water		Guiding
	Riparian Management	Target riparian zone management to areas of remnant vegetation and/or creation of habitat links	Melbourne Water		\$219,000

Management Unit
Watts River (Rural)

Number
59

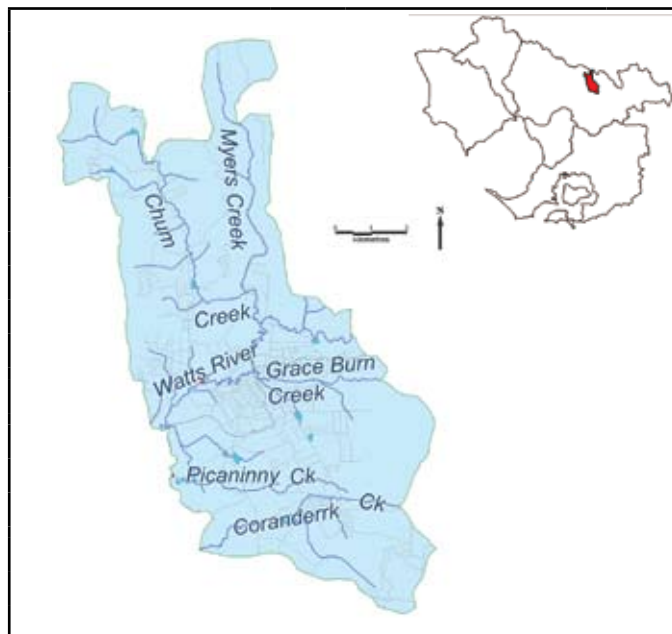
Targets for Management Unit					
	Water quality	Aquatic life	Habitat & stability	Vegetation	Flow
Excellent					
Good	●	●	●	●	●
Moderate	●		●	●	
Poor					
Very poor					

Importance	High
-------------------	------

	Current	Target
Condition	Moderate	Good
Social Value	High	High

Five Year Implementation Target Area	Target
No. rivers with negotiated environmental flow regimes	1*
No. rivers with improvements made to environmental flow regimes	1*
Area of streamside land under mgmnt agreement km ²	0.07
Kilometres of streamside land revegetated	8.5
Number of fish barriers removed	-
Number of sites subject to bed and bank stabilisation	-
Kilometres of riparian land subject to weed mgmnt	15.5
No. of plans developed for Rivers and Creeks of high social value	1
Rivers where heritage values protected or improved	2
No. of plans developed for rivers and creeks of high environmental value	-
No. of investigations to fill data gaps	3
No. IRC reaches with instream habitat reinstated	1

* and ^ denotes action which covers multiple MUs counted as one target in the overall targets.



The Watts River is largely contained within the forested Maroondah Reservoir water supply catchment. Total Kms: 82

Sub-management unit	No.	Sub-management unit	No.
Grace Burn/Coranderrk	45	Watts River	90

Program for the Watts River (Rural) Management Unit General

Program	Action	Lead responsibility	Partners	Costs (MW only)
Aquatic Habitat	Investigate opportunities for improving native fish habitat	Melbourne Water		Guiding
Flow Management	Develop, implement and monitor annual watering plans to utilise environmental entitlements.	Melbourne Water	Sustainability & Environment	\$22,000
Investigations	Undertake water quality, fish and platypus investigation	Melbourne Water		\$40,000

Program for the Watts River (Rural) Management Unit Specific to Sub-Management Unit

Sub-Mgt Unit	Program	Action	Lead responsibility	Partners	Costs (MW only)
Grace Burn/Coranderrk	Aquatic Habitat	Develop appropriate designs for removing barriers on both Coranderrk and Graceburn Creeks and implement where possible	Melbourne Water		\$100,000
		Ensure that woody debris is retained within the stream channel and investigate the reintroduction of woody debris where needed	Melbourne Water		\$70,000
	Riparian Management	In partnership with government agencies, local land managers and community groups undertake riparian management to gradually improve conditions and facilitate future rehabilitation with reference to local waterway plans where they exist	Melbourne Water	Agencies, Community	\$42,000
		Target riparian zone management to areas of remnant vegetation and/or creation of habitat links	Melbourne Water		Guiding
Watts River	Aquatic Habitat	Address downstream fish barriers	Melbourne Water		Guiding
	Investigations	Undertake a fish investigation	Melbourne Water		\$20,000
	Plans	Upgrade Watts River flood investigation Report (1997) to a Waterway Plan	Melbourne Water	Agency, Community	\$60,000
	Riparian Management	In partnership with government agencies, local land managers and community groups undertake riparian management with reference to local waterway plans where they exist	Melbourne Water	Agencies, Community	\$500,000

Appendix 6 – Catchment Specific Actions by Management Unit 2008/09 to 2012/13

Yarra Catchment

Management Unit

Watts River (Source)

Number

60

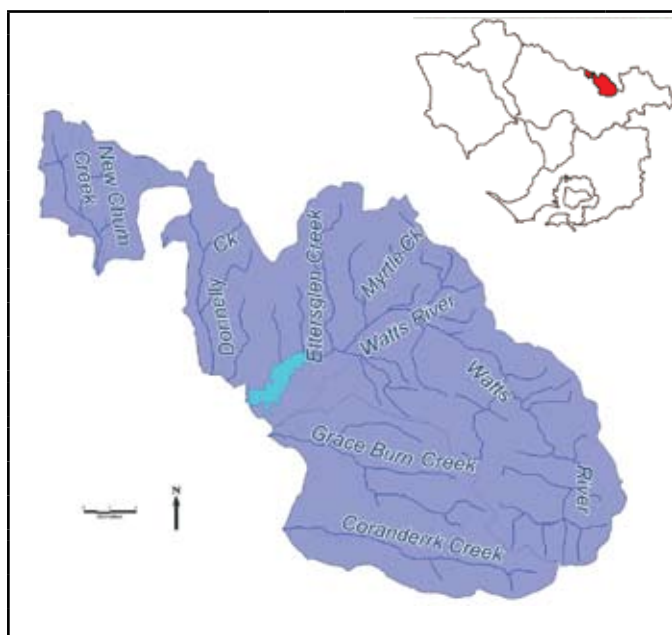
Targets for Management Unit					
	Water quality	Aquatic life	Habitat & stability	Vegetation	Flow
Excellent	●	●			●
Good			●	●	
Moderate					
Poor					
Very poor					

Importance	Very High
-------------------	-----------

	Current	Target
Condition	Excellent	Excellent
Social Value	Very High	Very High

Five Year Implementation Target Area	Target
No. rivers with negotiated environmental flow regimes	-
No. rivers with improvements made to environmental flow regimes	-
Area of streamside land under mgmnt agreement km ²	-
Kilometres of streamside land revegetated	-
Number of fish barriers removed	-
Number of sites subject to bed and bank stabilisation	-
Kilometres of riparian land subject to weed mgmnt	23.2
No. of plans developed for Rivers and Creeks of high social value	-
Rivers where heritage values protected or improved	2
No. of plans developed for rivers and creeks of high environmental value	-
No. of investigations to fill data gaps	2
No. IRC reaches with instream habitat reinstated	-

* and ^ denotes action which covers multiple MUs counted as one target in the overall targets.



The Watts River is largely contained within the forested Maroondah Reservoir water supply catchment. Total Kms: 163

Sub-management unit	No.	Sub-management unit	No.
Grace Burn/Coranderk Upper Forested	7	Watts River Upper Forested	17

Program for the Watts River (Source) Management Unit General

Program	Action	Lead responsibility	Partners	Costs (MW only)
Investigations	Undertake water quality, fish and platypus investigation	Melbourne Water		\$40,000
Riparian Management	In partnership with government agencies, local land managers and community groups undertake riparian management with reference to local waterway plans where they exist	Melbourne Water	Agencies, Community	\$812,000

Management Unit
Woori Yallock

Number
43

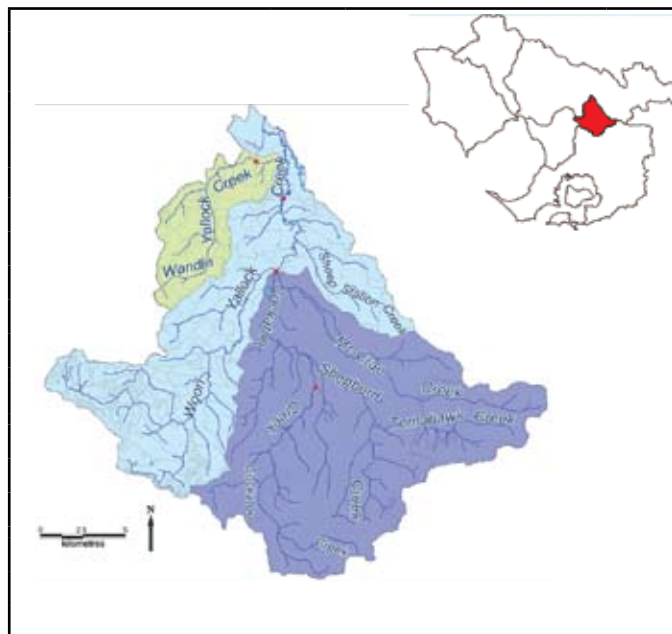
Targets for Management Unit					
	Water quality	Aquatic life	Habitat & stability	Vegetation	Flow
Excellent		●	●		
Good	●	●	●	●	●
Moderate	●	●	●	●	●
Poor					
Very poor					

Importance	Very High
-------------------	-----------

	Current	Target
Condition	Moderate	Good
Social Value	Moderate	Moderate

Five Year Implementation Target Area	Target
No. rivers with negotiated environmental flow regimes	-
No. rivers with improvements made to environmental flow regimes	1
Area of streamside land under mgmnt agreement km ²	0.36
Kilometres of streamside land revegetated	41.4
Number of fish barriers removed	-
Number of sites subject to bed and bank stabilisation	-
Kilometres of riparian land subject to weed mgmnt	75.3
No. of plans developed for Rivers and Creeks of high social value	-
Rivers where heritage values protected or improved	-
No. of plans developed for rivers and creeks of high environmental value	-
No. of investigations to fill data gaps	-
No. IRC reaches with instream habitat reinstated	3

* and ^ denotes action which covers multiple MUs counted as one target in the overall targets.



The Woori Yallock catchment is a major tributary of the Yarra River and has tributaries such as Cockatoo, Shepherd, McCrae and Wandin Yallock creeks. Total Kms: 373

Sub-management unit	No.	Sub-management unit	No.
Cockatoo Ck Upper Forested	4	Cockatoo Creek	32
Wandin Yallock	87	Woori Yallock Creek	92

Program for the Woori Yallock Management Unit General

Program	Action	Lead responsibility	Partners	Costs (MW only)
Aquatic Habitat (not Wandin Yallock)	Ensure that large woody debris is retained within the stream channel and identify key sites for reintroduction	Melbourne Water		\$160,000
Flow Management (not Cockatoo Ck Upper Forested)	Implement Woori Yallock Creek Stream Flow Management Plan to manage water allocation between private water use and the environment	Melbourne Water	Agencies, Community	\$120,000
Riparian Management (not Wandin Yallock)	In partnership with government agencies, local land managers and community groups undertake riparian management with reference to local waterway plans where they exist	Melbourne Water	Agencies, Community	\$2,430,000

Program for the Woori Yallock Management Unit Specific to Sub-Management Unit

Sub-Mgt Unit	Program	Action	Lead responsibility	Partners	Costs (MW only)
Cockatoo Ck Upper Forested	Aquatic Habitat	Address downstream fish barriers	Melbourne Water		Guiding
	Riparian Management	Target riparian zone management to areas of remnant vegetation and/or creation of habitat links	Melbourne Water		Guiding
Cockatoo Creek	Aquatic Habitat	Investigate opportunities for improving native fish habitat	Melbourne Water		Guiding
Wandin Yallock	Riparian Management	In partnership with government agencies, local land managers and community groups undertake riparian management to gradually improve conditions and facilitate future rehabilitation with reference to local waterway plans where they exist	Melbourne Water	Agencies, Community	\$208,000
Woori Yallock Creek	Aquatic Habitat	Investigate opportunities for improving native fish habitat	Melbourne Water		Guiding
	Riparian Management	Continue ongoing collaboration between Melbourne Water, Parks Victoria and Friends of the Helmeted Honeyeater with regards to Biolinks and particular continuing working along Shepherds Creek	Parks Victoria	Melbourne Water	Guiding
		Target riparian zone management to areas of remnant vegetation and/or creation of habitat links	Melbourne Water		Guiding