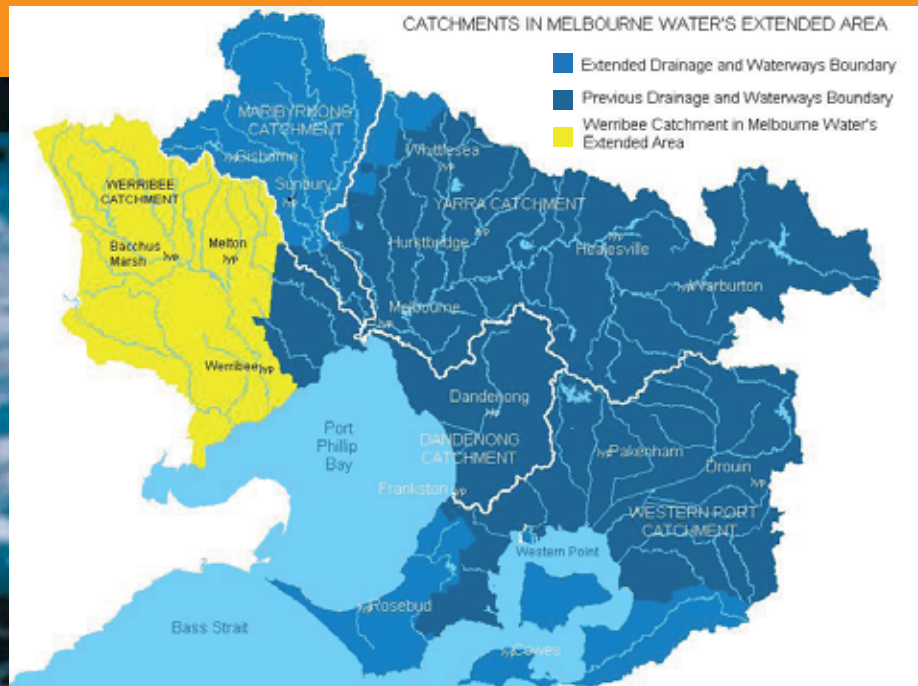


EXTENSION OF WATERWAY SERVICES PROGRESS REPORT: WERRIBEE CATCHMENT

September 2006



EXTENSION OF WATERWAY SERVICES PROGRESS REPORT: WERRIBEE CATCHMENT

1.0 SUMMARY

The Victorian Government's *Our Water Our Future* action plan designated Melbourne Water as caretaker of river health and the authority responsible for regional drainage, waterways and floodplain management for the Port Phillip and Westernport region.

This led to the extension of Melbourne Water's waterways boundary by more than 5,000 square kilometres in November 2005, allowing Melbourne Water to take a whole-of-region approach to managing waterways, regional drainage infrastructure and flood protection, and bring about long-term improvements to the condition of rivers in the catchment.

Perhaps one of our greatest challenges in these new areas is ensuring our programs match the expectations of the local communities. This is particularly challenging given that we have had very little interaction with these communities in the past, and as such our knowledge base was limited.

To develop our level of knowledge within these areas we have embarked on an intensive program of investigation, research and information collection with local councils, communities and stakeholders in the extended boundaries. This has allowed us to gain local information, discuss expectations, and to commence the establishment of appropriate levels of service required in our new areas, as we build up to full service provision.

This report provides an outline of information that has been collected during the last year. It also outlines some of the priority works that have either been completed, commenced or are in the planning phase. It is hoped that this report will provide a useful consultation tool to ensure that our proposed levels of service match community expectations within our new boundaries.

To ensure that we are able to discuss community expectations on a local level we have split our new area into five sub catchments: Greater Werribee, Upper Maribyrnong, Upper Northern Yarra, Mornington Peninsula and Bass River Catchment and the Islands. **Importantly, all actions outlined within this report only relate to the portions of these sub catchments that are within our extended boundaries.**



EXTENSION OF WATERWAY SERVICES PROGRESS REPORT: WERRIBEE CATCHMENT

2.0 INTRODUCTION

2.1 Our role and operating area

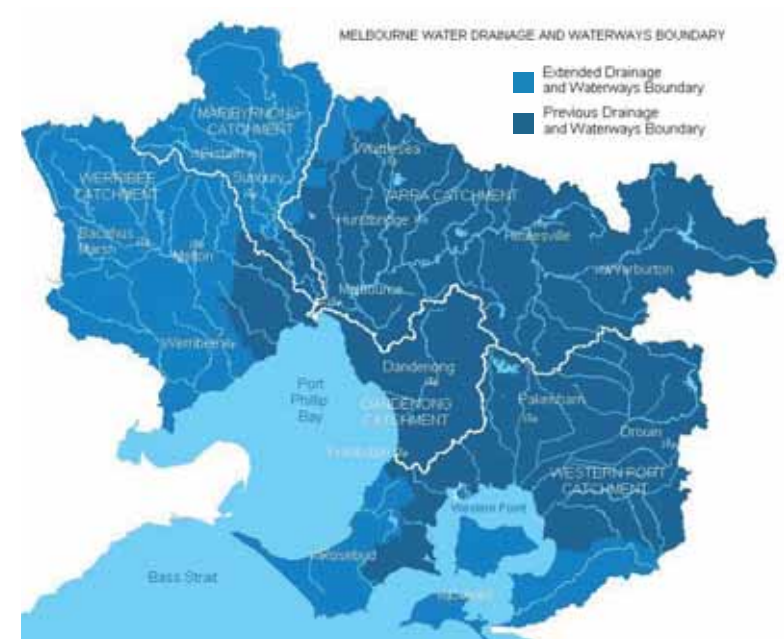
In June 2004, the Victorian Government released its *Our Water Our Future* action plan, which included an initiative to designate Melbourne Water as the caretaker of river health and the authority responsible for waterways, regional drainage and floodplain management for the Port Phillip and Westernport region.

A key action from this was the extension of Melbourne Water's waterways boundary by more than 5,000 square kilometres to cover the majority of the Port Phillip and Westernport catchment.

This clear and consistent allocation of responsibilities will enable integrated catchment management for the region, leading to improved prospects for river health across the whole catchment.

In undertaking our role, we value the work and knowledge of stakeholders and the community, and we will deliver an extensive array of community involvement, engagement and education activities.

The purpose of this document is to provide an outline of our information gathering efforts that have been undertaken so far. It will also give an overview of some of the priority works that have either been completed, commenced or are in the planning phase. By providing this outline of proposed works it is hoped that this report will act as a useful tool to seek input on our proposed levels of service for the region.



In November 2005, Melbourne Water was designated as the authority responsible for:

- regional drainage
- waterways, and
- floodplain management throughout the entire region.

We are responsible for river health, management and maintenance of regional drains and identifying and maintaining areas subject to flooding.

In our extended boundaries we do not provide sewerage and water supply services.

EXTENSION OF WATERWAY SERVICES PROGRESS REPORT: WERRIBEE CATCHMENT

2.2 How we link in with other agencies

Our major partner in the delivery of services within our extended boundaries is the Port Phillip and Westernport Catchment Management Authority (CMA). The CMA plays an overarching strategic management role in the development, coordination and delivery of the *Regional Catchment Strategy*. This relationship has continued to grow through strong links at a senior management level and with closer alignment of on-ground programs.

Information sessions and updates have also been provided to the other agencies we deal with including other water authorities, councils and government departments. These updates will ensure we continue to align our proposed levels of service with all stakeholders within our new areas.



EXTENSION OF WATERWAY SERVICES PROGRESS REPORT: WERRIBEE CATCHMENT

2.3 Our extended boundaries

Our boundary now matches the Port Phillip and Westernport Catchment Management Authority (CMA) area, which is approximately 13,000 square kilometres. The water resources of the region support a population of 3.4 million people as well as irrigation and other industry.

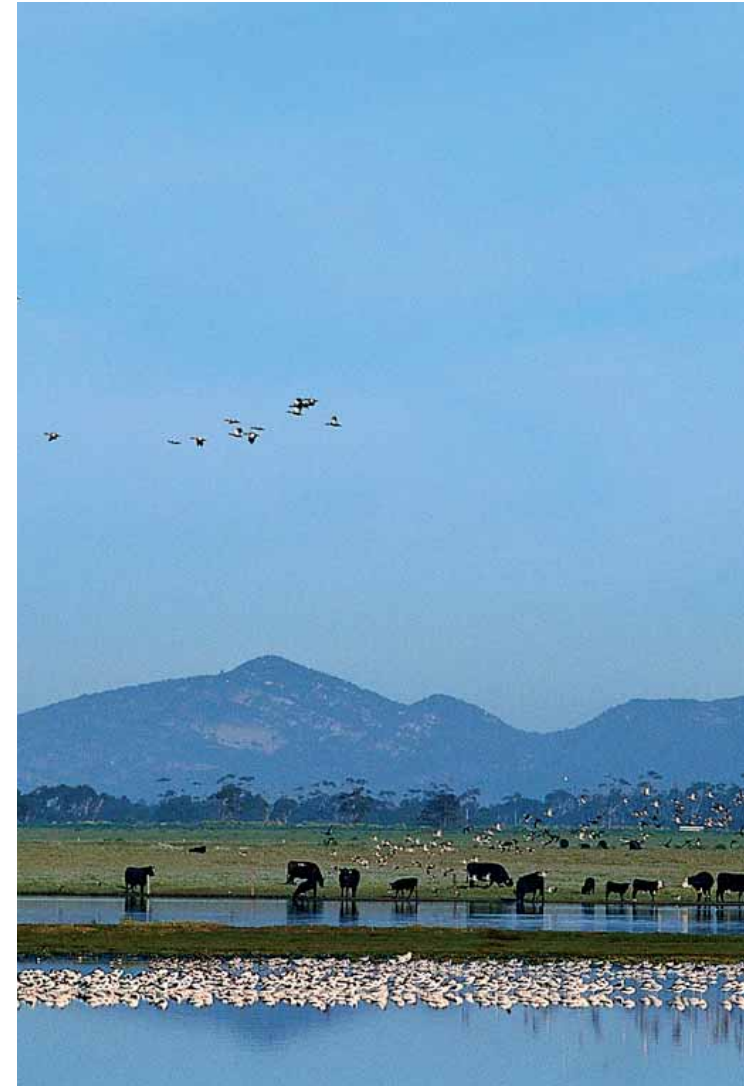
The region is made up of five major catchments – Maribyrnong, Werribee, Yarra, Dandenong and Westernport – containing 1,300 kilometres of regional drains, 8,400 kilometres of rivers and creeks and 109 wetlands, retarding basins and urban lakes. Within our new area we are providing services to the Greater Werribee, Upper Maribyrnong, Upper Northern Yarra, Mornington Peninsula and the Bass River Catchment and the Islands. Our operating area was extended by more than 5,000 square kilometres, and we have assumed responsibility for an additional 4,000 kilometres of rivers and creeks, 21 wetlands, retarding basins and urban lakes, and 80 kilometres of underground drains.

For the first time we are providing services in:

- Moorabool Shire
- Macedon Ranges Shire
- Mitchell Shire
- Greater Geelong City

We have extended our services further into:

- Melton Shire
- Bass Coast Shire
- South Gippsland Shire
- Mornington Peninsula Shire
- Wyndham City
- Hume City



EXTENSION OF WATERWAY SERVICES PROGRESS REPORT: WERRIBEE CATCHMENT

3.0 OUR APPROACH UNTIL NOW

3.1 Exploring our new areas

Melbourne Water has been working closely with the 10 councils and numerous stakeholders affected by the boundary change as we prepare to meet the challenges of our new, extended role.

As we have now assumed management of regional drainage, those assets with a catchment area greater than 60 hectares have been transferred from councils to Melbourne Water.

The formal introduction of services will take up to two years, while we undertake an extensive information gathering process to acquire an understanding of local needs. This has been our focus to ensure that our works are targeted to achieve the best outcomes.

3.2 Progress to date

- Establishment of a Waterways Group within Melbourne Water to provide a focused delivery of our waterway management functions
- Regional drainage assets transferred across from councils
- Workshops with councils have been held focusing on planning referrals, drainage schemes and waterways
- Community Information Sessions have been held with a range of local stakeholders
- Priority works have been identified and in some cases undertaken
- We have commenced planning for longer term works
- Information gathering and community and stakeholder consultation has been undertaken
- Responsibility for approval of works within the bed and banks of waterways has been handed over from Southern Rural Water
- Area Coordinators have been established in our new catchments
- We have established links with key community groups



EXTENSION OF WATERWAY SERVICES PROGRESS REPORT: WERRIBEE CATCHMENT

4.0 LOOKING AHEAD

4.1 Our services

Melbourne Water is accountable for protecting and enhancing the environmental, social and economic values of rivers. As part of our gradual build up to full service provision by 2008, the following key programs will be implemented:

Managing River Health

As the caretaker of river health, we are responsible for maintaining or improving the ecological health of rivers and creeks through erosion control, protecting riverbeds and banks, revegetation, weed control and by ensuring sufficient flows. Councils and communities can get involved by applying for Melbourne Water grants to assist them to undertake work to improve rivers and creeks in their area.

Improving Water Quality

Melbourne Water manages run-off from rural and urban catchments to improve the health of rivers, creeks and the bays. We work with stakeholders and the community to manage practices that impact on water quality, ensure land development is planned to improve stormwater quality and build infrastructure such as wetlands to treat stormwater.

Managing Our Drainage Assets

We are responsible for maintaining and operating the regional drainage system – that is drainage assets generally servicing catchments greater than 60 hectares. Local councils remain responsible for local drains, including roadside gutters and smaller drains.

Key roles:

- Production of the *Regional River Health Strategy*
- Waterway rehabilitation works
- Coordinating our grants programs

Key roles:

- Water quality monitoring programs
- Development of Water Sensitive Urban Design Systems

Key roles:

- Surveys of all drainage assets
- Ongoing maintenance of our assets

EXTENSION OF WATERWAY SERVICES PROGRESS REPORT: WERRIBEE CATCHMENT

Sustainable Development

Melbourne Water develops drainage schemes to ensure new developments are serviced with regional drainage infrastructure. The drainage schemes ensure that planning for urban development is conducted on a catchment basis and that drainage infrastructure meets appropriate standards for flood protection and water quality.

We assess applications for subdivisions and land developments from local councils, provide advice and, where necessary, place conditions on town planning permits. This ensures that new developments meet drainage and water quality standards.

Managing Flooding

Melbourne Water will undertake floodplain mapping to help plan and provide a safe level of flood protection for the community. We will also operate an online 24-hour rainfall and streamflow monitoring network on major rivers, and will provide the Bureau of Meteorology with flood predictions and warnings for major rivers. This has already been incorporated for the Wyndham/Werribee River area.

Community and Stakeholder Interaction

Community engagement is a key part of Melbourne Water's business. The Port Phillip and Westernport region has an active community that has carried out a vast amount of work to improve rivers and creeks. We assist improvement works by running several grant programs that help individuals, community groups and agencies carry out river health projects.

Melbourne Water encourages a high level of community and stakeholder understanding and active participation in programs. Education is an integral part of our community engagement program, with programs such as the Melbourne Water Frog Census, Waterwatch, community information campaigns, curriculum material and interactive and engaging resources relating to drainage, floods and litter.

Key roles:

- Development of Drainage Schemes
- Referral authority
- Development of suitable planning overlays

Key roles:

- Provide an online 24-hour rainfall and streamflow monitoring network
- Floodplain mapping

Key roles:

- Community Information Sessions
- Community Grants program
- Maintain strong relationships with stakeholders and local groups

EXTENSION OF WATERWAY SERVICES PROGRESS REPORT: WERRIBEE CATCHMENT

4.2 What this means for you

Community

Melbourne Water is undertaking a comprehensive consultation program with the community, local councils and other interested organisations to assess what level of service is required and how it would be provided and funded.

Members of the community seeking information on regional drainage (catchment area greater than 60 hectares) and river health should contact Melbourne Water. Councils are responsible for the local drainage system, which feeds into the regional drains and waterways, and local water authorities are responsible for providing water and sewerage services.

Developers

In the case of new developments with drainage impacts, we will act as a referral authority and will collect developer contributions to fund construction of drainage assets.

Landowners

Landowners with rivers or creeks running through their property are eligible to apply for grants to rehabilitate riverbanks and protect streamside vegetation from stock access through fencing and revegetation.

Community Groups

Community groups can apply to Melbourne Water for grants to improve their local waterways.

Councils

Melbourne Water is now the asset owner and manager of regional drainage assets with a catchment greater than 60 hectares. Melbourne Water is also the referral authority and so town planning subdivisions must be referred to us. As the waterway manager Melbourne Water is responsible for maintenance and works within the bed and banks of waterways. Grants for environmental improvements to waterways are available to councils through our Corridors of Green program.



EXTENSION OF WATERWAY SERVICES PROGRESS REPORT: WERRIBEE CATCHMENT

5.0 CONSULTATION ON SERVICE LEVELS

5.1 Why we are consulting

Melbourne Water regards community involvement as essential to increasing understanding, changing attitudes and behaviour, clarifying social expectations and improving our priority setting. We will continue to work with the Port Phillip and Westernport CMA to ensure the community is engaged in river, floodplain and drainage management.

Consultation will be a major priority for us over the next two years as we build up to full service provision, and we will continue to build relationships with councils, stakeholders and community groups in these areas. We value the importance of understanding local priorities, and sharing information with the community and other interested parties. We are also investigating opportunities to have a regional presence through local offices.

5.2 How we plan to consult

In addition to our ongoing interaction with stakeholders, this document will be used as an important tool in our consultation on service levels.

By outlining our past, current and future works in this document and on the accompanying plan, we hope to begin to provide a clear picture of our future levels of service.

To enable us to get a broad cross section of views on our levels of service we will continue to consult widely, using a range of methods such as:

- open community forums
- presentations to Landcare networks and Friends groups
- meetings with councils and stakeholder groups
- use of the local media to inform the broader community.

Landowners
Landcare
"Friends of" groups

Developers
Utility companies
Farmers

DSE
EPA Victoria
DPI
Parks Victoria

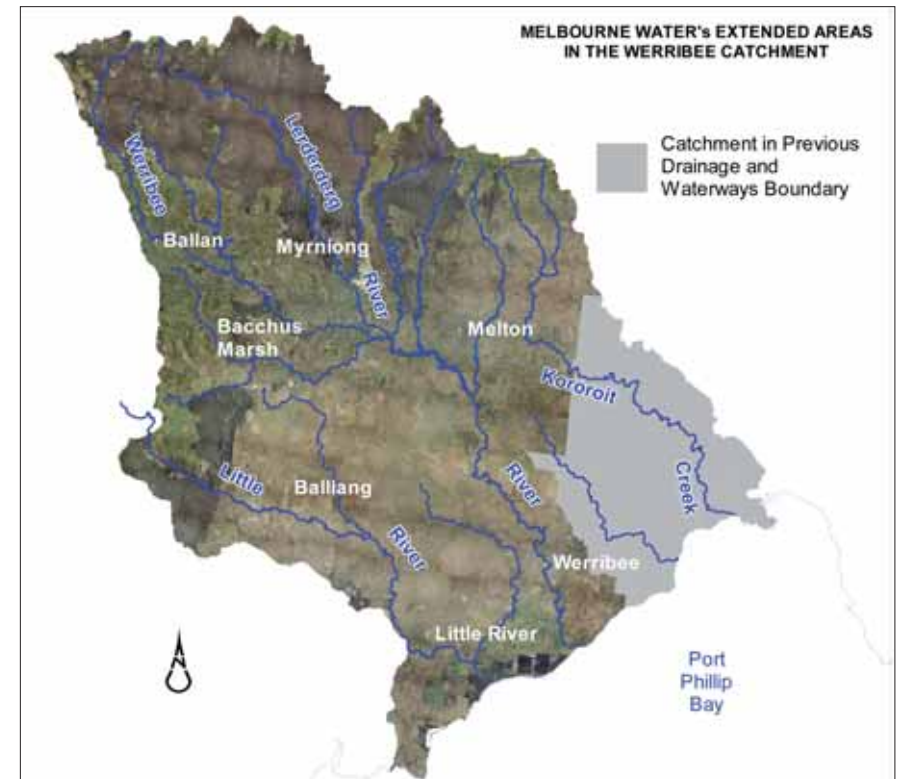
Local Councils
The Port Phillip &
Westernport CMA

EXTENSION OF WATERWAY SERVICES PROGRESS REPORT: WERRIBEE CATCHMENT

6.0 WHAT IS HAPPENING IN YOUR AREA?

6.1 Werribee Catchment

The Werribee catchment lies approximately 25 kilometres west of Melbourne. Our new boundaries extend from Wombat State Forest in the north down to Werribee and Port Phillip in the south, and from Rockbank and Mount Cottrell in the east to Ballan in the west, covering an area of approximately 2,348 square kilometres. The landscape varies from steep sided hills and gorges to flat plains. The catchment includes the Little River in the south, the main stem of the Werribee River and tributaries and the Lerderderg River to the north. The Local Government Areas within the extended boundary catchment are Wyndham, Melton, Moorabool and Greater Geelong.



EXTENSION OF WATERWAY SERVICES PROGRESS REPORT: WERRIBEE CATCHMENT

7.0 OUR PROGRAMS

The following tables give details of Melbourne Water's completed, current and future activities across the extended areas. We aim to illustrate what we have been doing since the changes to our boundaries and the variety of projects that are planned for improving river health over the next two years, whilst we build up to full service provision.

7.1 Managing River Health

As the caretaker of river health, Melbourne Water is responsible for maintaining and improving the ecological health of rivers and creeks. In order to achieve this we have a number of key programs undertaking specific projects.

Melbourne Water sets the overall framework for river health and water quality in the Port Phillip and Westernport region by integrating:

- state policy
- catchment activities
- regional river health and water quality objectives.

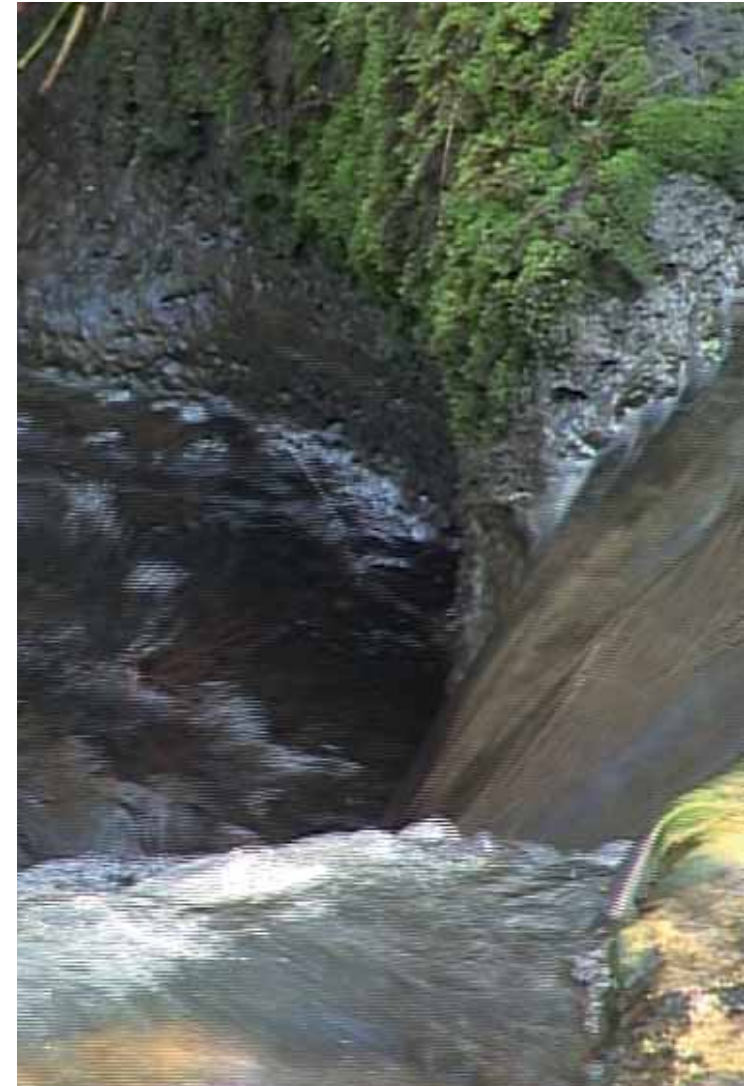
As part of this role we undertake technical investigations to determine the flows our rivers need and participate in water allocation decisions with water authorities or farmers to help restore environmental health.

As part of our commitment to improving river health we are responsible for the management of Greater Melbourne's waterways and undertake a number of activities, including:

- collection, analysis and reporting of waterway health data
- the development of improvement programs for waterways and wetlands
- the management of various grants programs, to help fund environmental improvement works along waterways.

In the Werribee catchment a number of investigations have commenced, including:

- fish and macro-invertebrate studies
- water quality



EXTENSION OF WATERWAY SERVICES PROGRESS REPORT: WERRIBEE CATCHMENT

- index of stream condition
- geomorphic studies
- frog surveys
- aerial survey for woody weed identification.

Our maintenance programs will target priority streams identified in the *Regional River Health Strategy* where there is good landholder interest and commitment. The large river restoration project on Werribee River has been a good start to waterway improvement works in the area, and we will build on this to undertake works on high priority waterways.

7.2 Improving Water Quality

Melbourne Water manages the run-off from rural and urban catchments to improve the health of rivers, creeks and the bays. We work with a range of stakeholders to develop programs aimed at protecting water quality by managing the quality and quantity of water entering our waterways and bays.

Melbourne Water has recently launched the Living Rivers Stormwater Program, which is a 4-year, \$10 million initiative funded by the Victorian Government. The main objective of this program is to work in partnership with local councils to achieve long-term improvements to the management of stormwater.

Water quality improvements are also being approached from a town planning perspective. Changes to the planning scheme have introduced Clause 56, which will have implications as to how water quality will be dealt with in residential developments. This is likely to increase the use of Water Sensitive Urban Design (WSUD) to improve water quality by integrating the planning and design of urban areas with the management and protection of the water cycle. The overall goal of WSUD combined with the changes to Clause 56 is to achieve on-site improvements in the quality and quantity of run-off.

Over the next 12 months we will be focusing on providing training and assistance to councils on water quality improvements within the extended boundaries.

Key principles and features of WSUD:

- Protect and enhance rivers and creeks within urban developments
- Improve the quality of water draining from urban developments into rivers, creeks and bays
- Reduce run-off and peak flows from urban developments by creating temporary storage areas e.g. rain gardens and urban forests
- Integrate stormwater quality treatment into the landscape e.g. grassed or landscaped areas and wetlands.

EXTENSION OF WATERWAY SERVICES PROGRESS REPORT: WERRIBEE CATCHMENT

7.3 Managing Our Drainage Assets

Melbourne Water is responsible for maintaining and operating the regional drainage infrastructure – drainage servicing catchments greater than 60 hectares.

To enable us to manage our drainage assets effectively, Melbourne Water undertakes a variety of functions to ensure that:

- our assets are functioning correctly
- our assets are not damaged by construction occurring nearby
- civil assets, such as retarding basins and underground drainage pipes, undergo the necessary risk assessments.

As the asset owner, we are responsible for maintenance of assets to ensure that they are operating correctly and that any possible risks associated with a specific asset is managed. We are currently working to improve the accuracy of the information held on all assets throughout the extended boundaries.

We also ensure that our assets are protected from new development occurring nearby. The types of development that may affect our assets, include:

- new buildings
- utility services installations
- jetties
- bridges and crossings.



Examples of our drainage assets include:

- mains drains
- retarding basins
- wetlands.

EXTENSION OF WATERWAY SERVICES PROGRESS REPORT: WERRIBEE CATCHMENT

7.4 Sustainable Development

To assist in ensuring that new development occurs in a sustainable manner, Melbourne Water develops drainage schemes to ensure that new developments are serviced with the appropriate drainage infrastructure. These drainage schemes are designed to provide the most effective and environmentally sound drainage management to service future urban areas within a defined catchment.

Melbourne Water is a referral authority requiring all town planning subdivisions to be referred to us to enable us to assess development applications and ensure that new developments meet drainage and water quality standards.

We are also working to minimise the number of properties at risk of flooding. In order to do this, the development of a number of mapping overlays in priority areas are being planned to identify flood prone areas, including:

1. The Land Subject to Inundation Overlay (LSIO) – is used to identify land in a flood storage area or an area that may be affected by the 1 in 100 year flood.
2. The Special Building Overlay (SBO) - is used to identify land in urban areas subject to flooding from excess flows from the urban drainage system.
3. The Urban Floodway Zone and Floodway Overlay – is used to identify waterways, major floodpaths and high hazard areas that have the greatest risk and frequency of being affected by flooding.



EXTENSION OF WATERWAY SERVICES PROGRESS REPORT: WERRIBEE CATCHMENT

7.5 Managing Flooding

Melbourne Water is undertaking a number of floodplain mapping and mitigation activities to help plan and provide a safe level of flood protection in our new areas.

We are currently obtaining survey information in our extended areas to enable us to complete our flood mapping and mitigation projects. We are also upgrading and extending our Hydrologic Data Collection equipment to monitor how much rain is falling and what flows are occurring in key waterways. This will enable us to expand our flood prediction and warning service for major rivers into our new areas.

Other key flood management activities include:

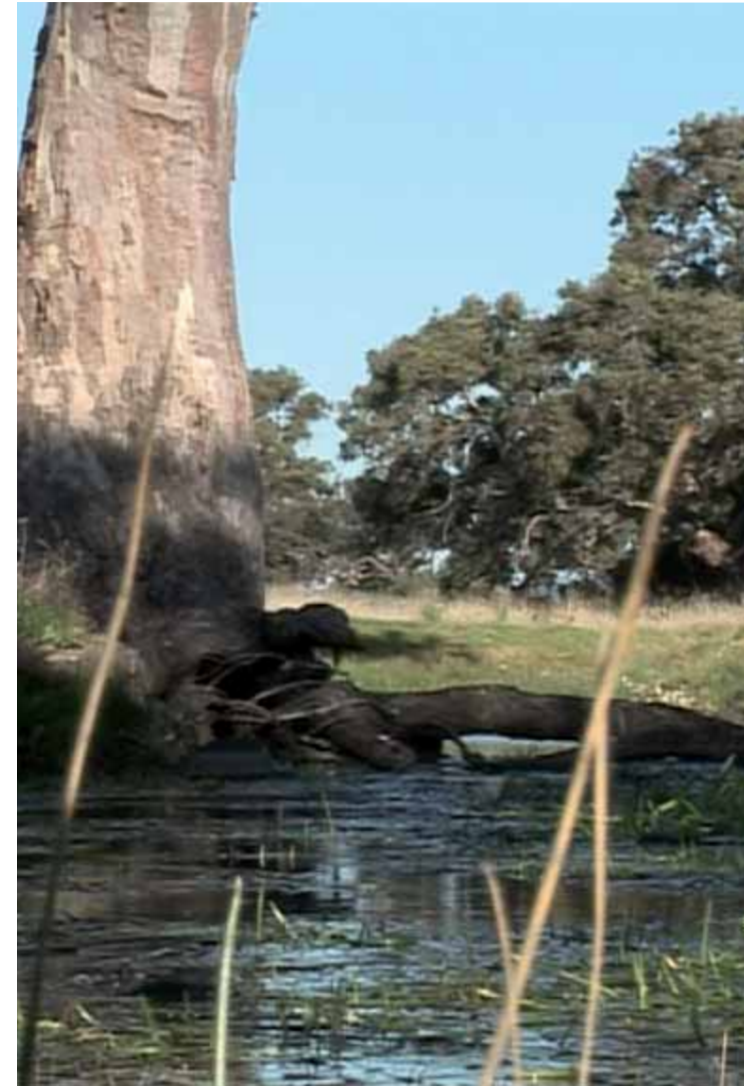
- floodplain investigations to evaluate the impact of development proposals
- management of a 24-hour flood warning service for the Greater Melbourne area
- provision of specialist advice and information to councils to assist with the development of their Flood Sub Plans
- preparation and provision of storm and flood reports.

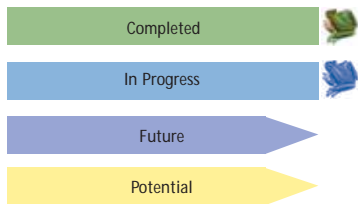
7.6 Community and Stakeholder Interaction

Community and stakeholder interaction is a significant part of our programs for improving river health. The key to successful waterway management in our new areas will depend on having a good understanding of local issues. We have recently developed a dedicated team to develop effective methods of stakeholder engagement and consultation across our extended areas.

Key projects include:

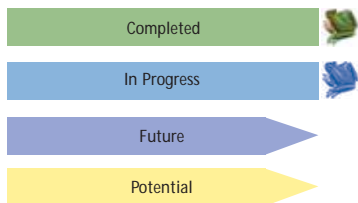
- producing factsheets to explain the changes to our boundaries and how this may affect different stakeholder groups
- the Making Connections event to bring together all people who have an interest in the future management and protection of waterways
- the co-ordination of Melbourne Waterwatch to engage schools, community groups and councils in Waterwatch activities.





EXTENSION OF WATERWAY SERVICES PROGRESS REPORT: WERRIBEE CATCHMENT

MANAGING RIVER HEALTH									
Title	Description	January-June 2005	July-December 2005	January-June 2006	July-December 2006	January-June 2007	July-December 2007	January-June 2008	July-December 2008
Regional River Health Strategy	Finalise the draft Regional River Health Strategy for the whole of the Port Phillip & Westernport region. The strategy provides a 5-year blueprint for agencies and communities to work together to improve rivers and creeks.	[Green bar]			[Green icon]				
Wyndham City Council Information Session	An information session was held with representatives from Wyndham City Council to provide an overview of the extension of waterway services and discuss future plans for improving river health.			[Green icon]					
Werribee River Environmental Flow Investigation	Investigation to establish how much water the environment requires to be healthy. This study recommends an environmental flow regime.				[Green bar]	[Green icon]			
Aquatic Investigations on the Werribee River	Aquatic Macroinvertebrate & Sediment Surveys carried out at 40 sites within the Werribee catchment.			[Green bar]		[Green icon]			
Fish Surveys on the Werribee River	Fish Surveys undertaken for 40 sites throughout the Werribee catchment.			[Green bar]		[Green icon]			
Stream Condition Investigations on the Werribee River	Index of Stream Condition Surveys undertaken throughout the Werribee catchment.			[Green bar]	[Green icon]				
Woody Weed Investigations on the Werribee River	Aerial surveys were undertaken for woody weed identification within the Werribee catchment. This also had the added benefit of identifying fish barriers and major erosion points.			[Green bar]	[Green icon]				
Werribee River	Preliminary weed spraying along the lower flats of the Werribee River at Exford.			[Green bar]	[Green icon]				
Werribee River	Stem injection of willows along Werribee River at Werribee Gorge.			[Green bar]	[Green icon]				
Werribee River	Bank stabilisation works along Werribee River at Werribee Mansion.			[Green bar]	[Green icon]				
Werribee River (tributary)	Minor desilt and erosion control along a Werribee River tributary adjacent to Lay Street, Ballan.			[Green bar]	[Green icon]				
Werribee River	Juvenile willow control along Werribee River in Caladonia Reserve, Ballan.			[Green bar]	[Green icon]				
Werribee River	Woody weed control on Werribee River at Cobbleticks Ford, Werribee.				[Green bar]	[Green icon]			
Werribee River Cross Sections Survey	Cross sectional survey at a number of sites along the Werribee River between Werribee and Ballan. This survey is being used to assist in assessing the ideal condition of this length of waterway.	[Green bar]		[Green icon]					
Central Region Sustainable Water Strategy	Government proposals to establish environmental water reserves for major rivers - allows for the implementation of the environmental flow investigations.	[Green bar]			[Green icon]				
Little River	Weed control on Little River.				[Green bar]	[Green icon]			
Toolern Creek	Stem inject woody weeds along Toolern Creek in Melton.				[Green bar]	[Green icon]			



EXTENSION OF WATERWAY SERVICES PROGRESS REPORT: WERRIBEE CATCHMENT

MANAGING RIVER HEALTH									
Title	Description	January-June 2005	July-December 2005	January-June 2006	July-December 2006	January-June 2007	July-December 2007	January-June 2008	July-December 2008
Better Bays and Waterways - a water quality improvement plan for the Port Phillip and Westernport region	The EPA and Melbourne Water, working in partnership with the Department of Environment and Heritage, is developing the Better Bays and Waterways - a water quality improvement plan. The plan will integrate current water quality activities with new ideas to create a water quality plan for our major bays, rivers, creeks and estuaries.	[In Progress]							
Werribee River Estuary Study	A research project to investigate fish migration in the Werribee Estuary and the links to freshwater inflows.		[In Progress]						
Water Quality Investigations on the Werribee River	Water quality studies at 41 sites in the Werribee catchment.	[In Progress]							
Frog Studies on the Werribee River	Frogs Significance and Distribution Study to identify frog species that occur within the Werribee catchment.				[In Progress]				
Geomorphic Investigations on the Werribee River	General assessments of geomorphologic stream types and the major geomorphic management issues in the Werribee catchment.			[In Progress]					
Restoring Werribee River Project - Lower Werribee River	Removal of large woody weeds (willow and desert ash) and spraying of other weeds including prickly pear. The project is funded by DSE and extends over approximately 6km from the Southern Rural Water Diversion weir to the Malty by-pass.			[In Progress]					
Willow Removal at Werribee Gorge	Working in partnership with Parks Victoria and Friends of Werribee Gorge to undertake willow removal throughout the Werribee Gorge.				[In Progress]				
Willow and Hawthorn removal on the Werribee River	Removal of mature willows and hawthorn along the Werribee River from Shores Road Bridge down to Malty Bypass near the Princes Freeway at Geelong.				[In Progress]				

CASE STUDY

PUTTING THE PUZZLE TOGETHER

Eric Bullemore started environmental works on his 700-acre property on the Little River in 2000, to improve the condition of the waterway. The banks of the river were so infested with weeds, such as the Tiger Pear and Serrated Tussock, that a lot of the land was inaccessible and unusable.

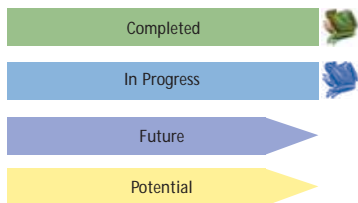
Water flow in Little River is normally very low, but when it rains, the floodwaters breathe new life into the waterway and attract new bird life and wildlife. It's these flood events and the flourish of activity that inspire Eric to keep working to improve Little River. His dream for the future is to see the river back to full flow and full health.

Eric said the help he received from Melbourne Water has been invaluable.

"We've managed to construct thousands of metres of fencing, and I have been able to share my knowledge of the river, its vegetation and the problems it faces with Melbourne Water staff," Eric said.

"Seeing the results of the fencing and the native grasses starting to take over has been really rewarding, although I know it's just a small piece in a much bigger picture. But hopefully with an ongoing partnership with Melbourne Water I can continue to play a part in piecing the puzzle together."





EXTENSION OF WATERWAY SERVICES PROGRESS REPORT: WERRIBEE CATCHMENT

MANAGING RIVER HEALTH									
Title	Description	January-June 2005	July-December 2005	January-June 2006	July-December 2006	January-June 2007	July-December 2007	January-June 2008	July-December 2008
Arnolds Creek Corridors of Green	Corridors of Green funding for the Shire of Melton for the rehabilitation of a concrete drainage line on Arnolds Creek, working in partnership with the Melton Environment Group.								
Dale Creek	A total of three Stream Frontage Management Program projects funded on Dale Creek.								
Djerriwarrh Creek	A total of four Stream Frontage Management Program projects funded on Djerriwarrh Creek.								
Goodman Creek	One Stream Frontage Management Program project funded on Goodman Creek.								
Lerderderg River Community Grant Funding	Community Grant funding for the Barry's Reef Landcare Group for a two year weed eradication program on the top of the Lerderderg riverbank.								
Little River Corridors of Green	Corridors of Green funding for Wyndham City Council for the control of Tiger Pear along the Little River.								
Little River Corridors of Green	Corridors of Green funding for Wyndham City Council for the Mouyong Reserve Recovery Project on the Little River, working in partnership with the Corio Landcare Group.								
Little River	A total of twelve Stream Frontage Management Program projects funded on Little River.								
Parwan Creek	A total of three Stream Frontage Management Program projects funded on Parwan Creek.								

CASE STUDY

STREAM FRONTAGE MANAGEMENT PROGRAM (SFMP)

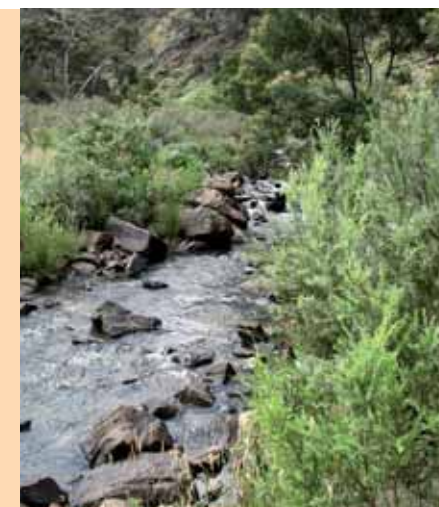
Waterways add considerably to the quality of urban and rural environments and often contain significant vegetation that provides important habitat for native fauna. Melbourne Water's Stream Frontage Management Program (SFMP) aims to improve the environmental, social and economic values of rivers and creeks by protecting and improving streamside vegetation and minimising erosion and stock access.

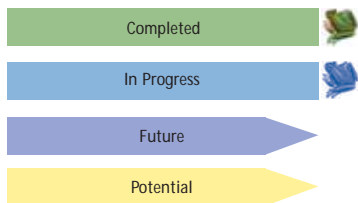
The SFMP provides grants to landowners to manage their stream frontage land. Funded works include fencing, weed control and revegetation, as well as training and advice. The program targets degraded rural waterway frontages across the Port Phillip and Westernport region.

The benefits of the program to the landowner and the environment include:

- increased land value through improved landscapes and stable land
- improved water quality and bed and bank stability
- increased aquatic and terrestrial fauna.

During 2005-06, over \$67,000 of funding was awarded to 21 projects throughout the Werribee catchment, including planting 8,500 indigenous species and installing 3.7 kilometres of fencing.





EXTENSION OF WATERWAY SERVICES PROGRESS REPORT: WERRIBEE CATCHMENT

MANAGING RIVER HEALTH										
Title	Description	January-June 2005	July-December 2005	January-June 2006	July-December 2006	January-June 2007	July-December 2007	January-June 2008	July-December 2008	
Reilly Creek	One Stream Frontage Management Program project funded on Reilly Creek.	[Progress bar]					[Icon]			
Toolern Creek Corridors of Green	Corridors of Green funding for the Shire of Melton, in conjunction with the Friends of Toolern Creek, for the rehabilitation of a grassy woodland along the Toolern Creek South Creek Line.				[Progress bar]	[Icon]				
Toolern Creek Community Grant Funding	Community Grant funding for the Friends of Toolern Creek for stage 2 of a restoration project on Toolern Creek.				[Progress bar]	[Icon]				
Toolern Creek	A total of nine Stream Frontage Management Program projects on Toolern Creek.	[Progress bar]					[Icon]			
Werribee River Corridors of Green	Corridors of Green funding for Wyndham City Council for the regeneration and management trial of red-leg grass on the Werribee River.				[Progress bar]	[Icon]				
Werribee River Corridors of Green	Corridors of Green funding for Wyndham City Council for stage 1 of the Werribee River Restoration Project, working in partnership with the Werribee River Association.				[Progress bar]	[Icon]				
Werribee River Community Grant Funding	Community grant funding for the Friends of Werribee Gorge and Long Forest Mallee Inc for stage 1 of the Werribee Gorge River Corridor Revegetation Project.				[Progress bar]	[Icon]				
Werribee River	A total of thirteen Stream Frontage Management Program projects funded on Werribee River.	[Progress bar]					[Icon]			
Yangardook Creek	One Stream Frontage Management Program project funded on Yangardook Creek.	[Progress bar]					[Icon]			

CASE STUDY

DRAINAGE SCHEMES

Melbourne Water is responsible for maintaining and operating the regional drainage system (drainage within catchments of greater than 60 hectares). A drainage scheme is a plan of the drainage works that are required to provide the most effective and environmentally sound drainage management to service future urban areas within a defined catchment.

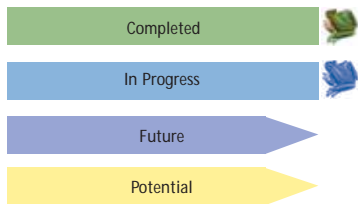
It identifies all the works required to provide an integrated drainage system, for the development of properties within a catchment, and estimates the cost of constructing those works. The scheme recovers the costs of these works from landowners when they subdivide or develop their land.

The core objectives of drainage systems are to:

- protect people and property from unacceptable flooding impacts
- ensure that local and downstream rivers and creeks are stable and ecologically healthy
- ensure that minimal pollution in run-off from new urban areas reaches rivers, creeks and bays.

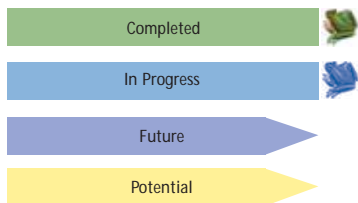
There is no formal limit to the size of the scheme area. It will vary from scheme to scheme and is closely related to the drainage characteristics of the land. Within the Werribee catchment there are nine drainage schemes either underway or proposed including Eynesbury Drainage Strategy, Lollypop Creek Drainage Scheme and Toolern Creek Drainage Scheme. These vary from up to approximately 12,000 hectares down to 114 hectares.





EXTENSION OF WATERWAY SERVICES PROGRESS REPORT: WERRIBEE CATCHMENT

MANAGING RIVER HEALTH									
Title	Description	January-June 2005	July-December 2005	January-June 2006	July-December 2006	January-June 2007	July-December 2007	January-June 2008	July-December 2008
Estuaries Management Plan	A plan will be developed to guide our management of key estuaries in the Port Phillip & Westernport region, including tackling knowledge and data gaps.								
Trial of Environmental Flow Investigation Method for Estuaries	Trial of a new environmental flow investigation method for Victorian estuaries. The trial is being undertaken in the Barwon and Werribee Rivers.								
Setting Environmental Flow Objectives for Estuaries	A project to set environmental flow objectives for estuaries including the Werribee River.								
Little River	Follow up weed control project with Wyndham on Little River.								
Weed Removal on the Little River	Woody weed removal and bank restoration works on approximately 2km of frontage within the township with Little River Landcare and Little River Friends Groups.								
SFMP along the Upper Toolern Creek	This area has several Stream Frontage Management Program participants and landcare groups. There is potential to work with these existing participants, depending on the levels of interest, to provide better waterway rehabilitation outcomes.								
Investigations on the Werribee River	Investigation of fish barriers and identification of opportunities to provide fish passage.								
Waterway Activity Plan - Lower Werribee	Development of a Waterway Activity Plan to identify and prioritise waterway improvement works and assign responsibility.								
Willow Removal on the Werribee River	Removal of willows from approximately 2km of waterway downstream of Melton Reservoir. The project will build upon an existing Western Water Stream Frontage Management Program project with input from local Landcare groups/landholders/Council.								
Willow Removal on the Werribee River within Werribee Gorge State Park River	Willow removal work to build on an existing project within the Werribee Gorge State Park. This project is likely to be staged, starting with removal of willows from a single landowner's frontage and expanding to others.								
Weed Control along the Melton Reservoir, Werribee River	This project remains to be scoped and may include weed control and revegetation along the Melton Reservoir, possibly in conjunction with other land managers and landholders.								
Weed Removal on the Werribee River	There is potential to build on current woody weed removal and weed control project upstream of the Werribee township, by incorporating a revegetation component.								
Willow Removal at Ballan on the Werribee River	Follow on works from a Moorabool Shire Council willow removal project. Proposed to work with council to remove 500m of willows along a public reserve within Ballan.								



EXTENSION OF WATERWAY SERVICES PROGRESS REPORT: WERRIBEE CATCHMENT

IMPROVING WATER QUALITY

Title	Description	January-June 2005	July-December 2005	January-June 2006	July-December 2006	January-June 2007	July-December 2007	January-June 2008	July-December 2008
Review of Stormwater Management Plans	All council Stormwater Management Plans have been reviewed and Melbourne Water actions identified and recorded from each. Most projects will be reviewed as part of the future project "Identification of regional water quality improvement opportunities."								
WSUD standard drawings	Development of a set of standard drawings for street layouts with WSUD within Wyndham.								
Living Rivers Stormwater Program - council engagement	The aim of this 4-year initiative is to achieve long-term improvements in the management of stormwater entering our waterways and bays. Meetings will be held with councils to identify their needs and potential partnership projects.								
WSUD training sessions	Five 1-day training programs will be held to assist with the rollout of Clause 56. The sessions will focus on integrating WSUD into residential subdivisions. A workshop will be held in Werribee in September 2006.								
Identification of regional water quality improvement opportunities	A desk and field study of sites suitable for regional wetlands or bio-retention systems. The project will designate a number of priority projects and will cover many of the actions identified as part of the review of council Stormwater Management Plans.								
Living Rivers Stormwater Program - targeted workshops	Targeted workshops with councils that will identify council specific projects for funding.								

CASE STUDY

KEEPING THE WERRIBEE WILD

John Forrester is from the Werribee River Association and is the Chair of the Werribee Waterways Management Committee. John is also a member of the Melbourne Water Waterways Advisory Committee and is the Program Coordinator for Grow West, a large-scale landscape change project within the Werribee catchment.

The Werribee River Association is involved in on-ground work to restore and revegetate native habitat within the Werribee Township. The Waterways Management Committee focuses more on liaising with other organisations that impact on the river from outside of Werribee itself. The committee is about two years old and John is working to increase its activities, develop

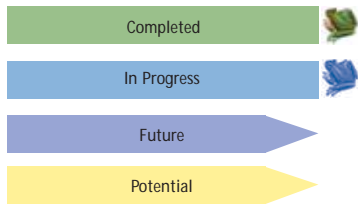
closer working relationships with other organisations and strengthen its position in the region.

"I believe that people need naturally wild places like this for our wellbeing," John said.

"We must look after these waterways so that they will be in suitable condition for enjoyment in years to come."

"Melbourne Water has a great challenge and an opportunity as the waterway manager, to ensure that its activities can produce the best outcomes for the waterway by bringing together all of the people who work on the river. People now understand that looking after the river isn't just an environmental issue; it's also about health – of plants, wildlife and people."





EXTENSION OF WATERWAY SERVICES PROGRESS REPORT: WERRIBEE CATCHMENT

MANAGING OUR DRAINAGE ASSETS

Title	Description	January-June 2005	July-December 2005	January-June 2006	July-December 2006	January-June 2007	July-December 2007	January-June 2008	July-December 2008
Underground asset data capture	Collation of the transferred underground assets from councils. A field survey has been undertaken to check the details and locations and the resultant data will be loaded into our internal systems.								
Impact assessment of major infrastructure projects	Investigations to assess the possible impacts of proposed works on waterways. An example is the major gas line from Brooklyn to Lara, crossing numerous waterways, sewer and water mains, drains and waterways.								
Structural assessment of drainage assets	This assessment evaluates what condition assets are in and determines the likelihood and impacts of a failure. Assessments of all underground drains are to be undertaken within our extended boundaries.								
Retarding basin inspection program	Inspection of all retarding basins within our extended boundaries. Maintenance requirements and other issues are being identified and programmed.								
Provision of underground asset data for councils	Once all data has been captured and verified it will be provided back to the councils for inclusion in their internal systems.								

CASE STUDY

COMMUNITY GRANTS PROGRAM

Volunteer community groups play an important role in protecting and improving local rivers and creeks. Melbourne Water's Community Grants Program began in 1999 to support the immense effort that community groups commit to the rehabilitation of their local waterways.

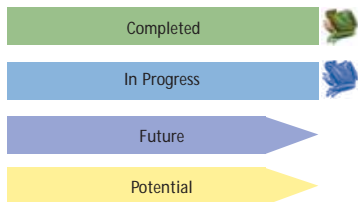
The program is aimed at providing financial assistance to community groups to sustain and support their works and efforts. These incentives have been made available for the funding of materials, equipment, administrative support and newsletter production.

Since 1999, Melbourne Water has distributed more than \$600,000 in grants to assist community groups in their work to improve and revegetate Melbourne's rivers and creeks and their surroundings.

In 2005-06 the program extended into Melbourne Water's expanded operating area. Around \$17,000 in Community Grants was allocated to three community groups in the Werribee catchment; providing approximately 4,600 plants and revegetation and weed control along 250m of waterway. Among those were the Friends of Werribee Gorge and Long Forest Mallee who received \$4,500 towards stage 1 of the Werribee Gorge River Corridor Vegetation Project. Community Grants have also been awarded at significant areas on Toolern Creek, to assist in the implementation of the Toolern Creek Biodiversity Action Plan.

Funding for Community Grants will increase in the coming years to assist community groups undertake waterway works in line with the priorities of the *Port Phillip and Westernport Regional River Health Strategy*.





EXTENSION OF WATERWAY SERVICES PROGRESS REPORT: WERRIBEE CATCHMENT

SUSTAINABLE DEVELOPMENT

Title	Description	January-June 2005	July-December 2005	January-June 2006	July-December 2006	January-June 2007	July-December 2007	January-June 2008	July-December 2008
Consultation with councils regarding the development of drainage schemes	Meetings were held across all of our new councils to obtain an understanding of local issues. Reports were collected and reviewed to gain information to feed into our decision making process.								
Identification and prioritising of potential drainage schemes	Catchments with substantial areas of land zoned for development were identified. The catchment boundaries were determined and drainage schemes were prioritised.								
Survey for Lollypop Creek and tributaries	Cross sectional survey on Lollypop Creek and its tributaries within Wyndham as part of the development of the Lollypop Creek Drainage Scheme.								
Survey of Toolern Creek & Tributaries	Detailed survey of Toolern Creek and tributaries within Melton. This survey is part of the preliminary investigation being undertaken for the development of a drainage scheme in this area.								
Eynesbury Drainage Strategy	A development located at the boundary of Melton and Wyndham municipalities on the west bank of the Werribee River. The developer has created a drainage strategy which Melbourne Water are reviewing.								
Hogans Rd Drainage Scheme	With a catchment of approximately 114 hectares, the catchment is bounded by Tarneit Road to the east, Wootten Rd to the west, Hogans Road to the south and Claremont Estate to the north. A small portion of land in the south west end of Wootten Road also drains to the D1 drain.								
Lollypop Creek Drainage Scheme, City of Wyndham	The study area is located entirely within the City of Wyndham, and runs from the confluence of Lollypop and Cherry Creeks in the south (south of the Princes Fwy), Werribee Park in the east, up to Ballan Road in the north and Wyndham Vale in the west. The catchment covers an area of approximately 12,000 hectares.								

CASE STUDY

INFORMATION BEFORE ACTION

Tony Herwith is a Land Information Officer at Melton Shire Council. In his role he visits approximately 1200 properties a year to get landowners involved with weed control and revegetation. Visiting people on their property is a huge part of his role as he is able to help them identify which plants are weeds and which plants are ecologically important.

Tony said he enjoyed seeing the Friends of Toolern Creek start up and begin to tackle some of the weed problems in the area.

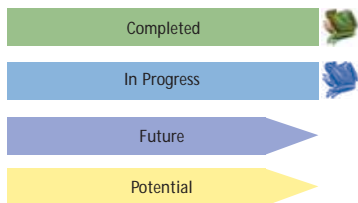
"The creek was in poor condition, mainly due to people dumping their rubbish in it," he said.

"I really hope that our efforts will help promote the community's access to the creek, increase their sense of ownership and help to discourage this negative behaviour."

Tony and the community groups in the area have made good use of a number of environmental improvement grants available, including Green Wedge Grants and Melbourne Water's Stream Frontage Management Program (SFMP). The funding has been put towards revegetation, tree planting and fencing.

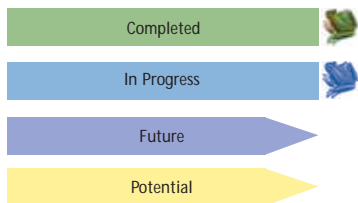
"Now that Melbourne Water is the waterway manager for the area, we are looking forward to more support for planting days along the creek and getting the local schoolchildren and community groups involved."





EXTENSION OF WATERWAY SERVICES PROGRESS REPORT: WERRIBEE CATCHMENT

SUSTAINABLE DEVELOPMENT									
Title	Description	January-June 2005	July-December 2005	January-June 2006	July-December 2006	January-June 2007	July-December 2007	January-June 2008	July-December 2008
Toolern Creek Drainage Scheme	Located in Melton, the catchment is in general bounded by Cabbage Tree Hill and Flagstaff Hill to the north, Graigs Road at the Werribee River to the south, Kororoit Creek catchment to the east, and Coburns Road and Arnolds Creek catchment to the west.								
Brookfield Drainage Scheme	Located in Brookfield, the catchment is approx 560 hectares draining down to the convergence of the Werribee River and the Melton Reservoir in the suburb of Exford. Survey is currently being undertaken for this scheme.								
Clause 56 - implementing the provisions from the Sustainable Neighbourhoods Planning Scheme	Meetings and workshops with councils to examine the planning implications of Clause 56 and how they are to be implemented.								
Survey of a tributary of the Werribee River in Brookfield	Detailed survey of a tributary of the Werribee River in Brookfield upstream of the Melton Reservoir. This survey is part of the preliminary investigation being undertaken for the development of a drainage scheme in this area.								
Upper Werribee River	Exact size and location of scheme within Moorabool Shire Council is still to be scoped as part of initial investigations.								
Lerderberg River	Exact size and location of scheme still to be scoped as part of initial investigations.								
Korkuperrimul Creek	Exact size and location of scheme still to be scoped as part of initial investigations.								
Davis Creek	Exact size and location of scheme still to be scoped as part of initial investigations.								
Council Planning Workshops - "How We Work Together"	A series of workshops with council planning departments to discuss opportunities for improving the referral process. Also presents opportunities for relationship building.								
Implementation of Land Subject to Inundation Overlays (LSIO) or Special Building Overlays (SBO)	Discussions with Moorabool, Melton and Wyndham councils about implementing LSIO/SBOs to provide information on areas or buildings that may be subject to flooding.								
Implementation of Land Subject to Inundation Overlays (LSIO) or Special Building Overlays (SBO)	Discussions with Greater Geelong Council about implementing LSIO/SBOs to provide information on areas or buildings that may be subject to flooding.								



EXTENSION OF WATERWAY SERVICES PROGRESS REPORT: WERRIBEE CATCHMENT

MANAGING FLOODING										
Title	Description	January-June 2005	July-December 2005	January-June 2006	July-December 2006	January-June 2007	July-December 2007	January-June 2008	July-December 2008	
Addition of known flood "shapes" onto our system	Updating of Melbourne Water's systems with known flood shapes from the Department of Sustainability and Environment.									
Identify priority catchments for mapping	An assessment of catchments has been undertaken to prioritise flood mapping projects. Assessments were based on a number of factors including flood extents and levels.									
Ballan preliminary mapping	Flood mapping information for Ballan has been developed and placed on our internal system. This information has also been shared with Moorabool Shire Council.									
Collation and review of flooding reports	Existing flood reports have been captured digitally and reviewed to be used in improvements to future reporting.									
Werribee Hydrologic Data Collection Network	Handover of management responsibility for the Werribee Hydrologic Data Collection Network from Wyndham City Council. The network has required works to ensure it is compatible with our existing system.									
Upper Werribee hydrologic study	RORB modelling undertaken to complete mapping of the floodplain.									
Port Phillip & Western Port Flooding and Drainage Strategy	A flood management and drainage strategy that will provide options and recommendations to improve flood management and reduce the impacts of flooding on the community.									
Bacchus Marsh Flood Study	Working with Moorabool Council to ensure that flood studies currently being undertaken meet the requirements of both organisations.									
Floodmapping for priority catchments	Floodmapping has commenced for those catchments identified as being high priority.									

CASE STUDY

MELBOURNE WATERWATCH

Melbourne Waterwatch is part of the Waterwatch Australia network. It is a free river health education and monitoring program, which aims to increase community understanding and participation in local river health issues through a broad range of activities that encourage the community to become involved in monitoring the health of rivers, creeks and wetlands.

The overall objective of the Melbourne Waterwatch program is to provide the expertise and support required to enable students and community members to:

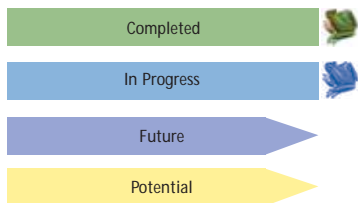
- gain an understanding of river health issues
- learn how to collect river health information from their local creek, river, or wetland

- discuss their findings with Melbourne Waterwatch coordinators to identify what can be done at a local level to improve the health of Melbourne's waterways
- become involved in on-ground works to help address local river health issues.

In 2005-06 over 31,000 people were involved in the program.

Melbourne Waterwatch is sponsored by Melbourne Water, the Natural Heritage Trust, and every local council across Greater Melbourne. Other supporters include the Department of Sustainability and Environment, the Merri Creek Management Committee, the Department of Primary Industries, and Southern Rural Water.





EXTENSION OF WATERWAY SERVICES PROGRESS REPORT: WERRIBEE CATCHMENT

MANAGING FLOODING										
Title	Description	January-June 2005	July-December 2005	January-June 2006	July-December 2006	January-June 2007	July-December 2007	January-June 2008	July-December 2008	
Existing floor survey information	Existing information obtained from floor surveys will be placed on our systems to assist in identifying problem areas and the prioritisation of flood mitigation studies.									
Waterway asset data capture	Collection of available waterway data for our new areas that is then being realigned with further contour data to improve accuracy.									
Acquisition of one metre contours	Acquisition of one-metre contours covering non-growth areas in conjunction with the Department of Sustainability and Environment.									
Upgrade of the Werribee Hydrologic Data Collection Network	Upgrade, extension and enhancement of the hydrologic equipment (rain gauges, level gauges etc) used for monitoring how much rain is falling and what flows are occurring in key waterways.									
Minns Road Retarding Basin	Investigation and design of improvement works at Minns Road retarding basin in Melton.									
Aerial survey for mapping projects	Data from the aerial surveys will be processed to enable mapping for priority areas to commence.									
Construction of improvement works at Minns Road Retarding Basin	Construction of improvement works at Minns Road retarding basin in Melton to assist in the control of local flooding issues from the upstream catchment.									
Undertake new floor surveys	Obtain further floor levels to assist in identifying problem areas and prioritisation of flood mitigation studies.									

CASE STUDY

MAKING CONNECTIONS, MELBOURNE WATER SEARCH CONFERENCE

Melbourne Water and the CMA held a workshop in Romsey in May 2006 to seek community input into the future management of waterways in the Maribyrnong catchment. The Making Connections event was the first of a series that are planned for the region.

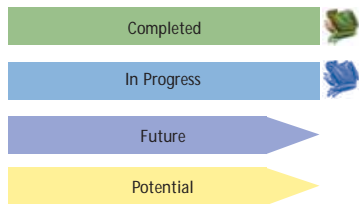
A similar event was held in Rockbank for the Werribee catchment in August.

Melbourne Water Managing Director Rob Skinner said the aim of the workshops was to connect with stakeholders with an interest in river health, and establish a way of working together for the future health of waterways in the region.

"The events attracted participants from community groups, local government, schools, the CMA and retail water authorities. Input from all of these key players is crucial not only to our understanding of the health of local rivers, but also in the development of our strategic work plan for the region," Mr Skinner said.

"Our success in the region will depend on everyone with a keen interest in the future management and protection of waterways coming together to work with us in developing better outcomes for our waterways."





EXTENSION OF WATERWAY SERVICES PROGRESS REPORT: WERRIBEE CATCHMENT

COMMUNITY & STAKEHOLDER INTERACTION

Title	Description	January-June 2005	July-December 2005	January-June 2006	July-December 2006	January-June 2007	July-December 2007	January-June 2008	July-December 2008
Community Engagement Plans	Consultation to ensure the community is adequately advised for drainage and floodplain services in their region.								
Managing Rivers & Drainage fact sheet	Fact sheet produced to ensure the community is informed on drainage, waterways and floodplain services for their region.								
Community Information Workshops for the Extended Areas	These workshops were held to inform key council, Landcare and community groups about Melbourne Water's role and responsibilities, map out priority areas, discuss our river health projects and programs and how we can work best with local communities. The Werribee workshops were held at Melton and Wyndham.								
Werribee Making Connections Event	An independently facilitated workshop with a broad range of stakeholders with a common interest in waterways in the Werribee catchment. One of the aims of the event was to improve the flow of information and build stronger relationships.								
Werribee Plains Waterwatch	Design and delivery of a best practise Water Education program over two years across the Werribee Plains. Waterwatch is to receive \$500,000 from the Victorian Water Trust with additional funding and in-kind support totalling \$890,000.								
Consultation with Grow West	Consultation with Grow West to develop closer working relationships and assist in identifying appropriate projects for Community Water Grant money in the Parwan Valley. Consultation has included site visits to the Parwan Valley during June and July.								

CASE STUDY

CORRIDORS OF GREEN PROGRAM

The Melbourne Water Corridors of Green Program began in 1999 to help councils undertake environmental improvements works along waterways. Since then, the program has distributed more than \$1.6 million to councils and funded 193 projects to improve rivers and creeks in the Port Phillip and Westernport region.

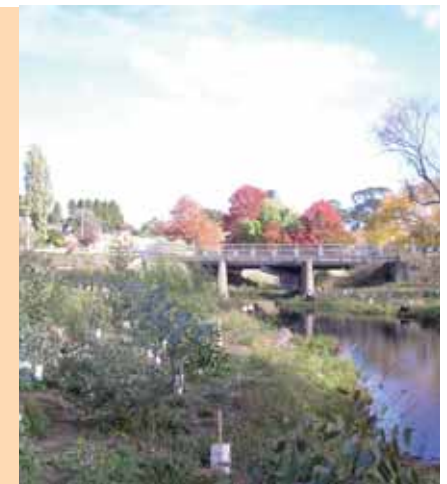
In order to receive funding, councils are required to contribute 50 per cent to the cost of a project by either a direct financial or in-kind contribution.

The objectives of the Corridors of Green program are to:

- assist councils to enhance habitat corridors and improve amenity of open space
- foster an understanding and appreciation of river health within the community

- improve the quality and quantity of indigenous riparian vegetation
- reduce the impact of threatening processes
- return native fauna to urban parklands.

The program was extended in 2005-06 when Melbourne Water assumed responsibility for managing waterways across the whole region. It has assisted six programs in the Werribee catchment, providing around \$82,000 of funding. Over 24,000 plants were provided and over six kilometres of waterways were revegetated and treated for weeds. The Melton Environment Group received \$17,000 towards the rehabilitation of a drainage line along Arnolds Creek. Wyndham City Council has also received support from the Corridors of Green program for control of Tiger Pear in the Little River catchment.



EXTENSION OF WATERWAY SERVICES PROGRESS REPORT: WERRIBEE CATCHMENT

Melbourne Water
100 Wellington Parade, East Melbourne
PO Box 4342 Melbourne Victoria 3001
Telephone 131 722
Facsimile 03 9235 7200
melbournewater.com.au

Disclaimer:

Whilst all due skill and attention has been taken in collecting, validating and providing the attached data, Melbourne Water Corporation shall not be liable in anyway for loss of any kind including damages, costs, interest, loss of profits or special loss or damage, arising from any error, inaccuracy, incompleteness or other defect in this information. In utilising this information the recipient acknowledges that Melbourne Water Corporation makes no representations as to the accuracy or completeness of this information and the recipient ought to carry out its own investigations if appropriate.

This publication may be of assistance to you but Melbourne Water and its employees do not guarantee that the publication is without flaw of any kind or is wholly appropriate for your particular purposes and therefore disclaims all liability for any error, loss or other consequence which may arise from you relying on any information in the publication.